

TRIPLE ABC TECHNIQUE IN CLINICAL ASSESSMENT IN BREAST CANCER DIAGNOSIS

By

Prof. Dr. Sribatsa Kumar Mohapatra,
M.S., FRCS, FAIS, DNB

&

Prof. Dr. Brajamohan Mishra,

VSS Institute of Medical Sciences & Research,
Burla, Sambalpur

VEER SURENDRA SAI MEDICAL COLLEGE
BURLA ESTD-1959

VEER SURENDRA SAI MEDICAL COLLEGE
BURLA . Estd-1959



INTRODUCTION:

- ❖ Triple assessment is the standard assessment in breast cancer diagnosis
- ❖ Clinical, Radiological & Pathological examination is the standard practice.
- ❖ Clinical examination remains cornerstone of diagnosis around the world.
- ❖ As it is cost effective in contrast to Radiological & Pathological examination.

- ❖ Can be applied anywhere anytime.
- ❖ Unfortunately there is no standardization of the clinical assessment.
 - ❖ In this paper we have devised a standard method called **triple ABC method** for clinical assessment.

An innovative triple ABC technique for clinical breast examination for breast disorder

- Three sets of ABCs are used .

First ABC stand for

- Axila
- Breast
- Cervical

Area on non affected side

Second ABC stand for affected side

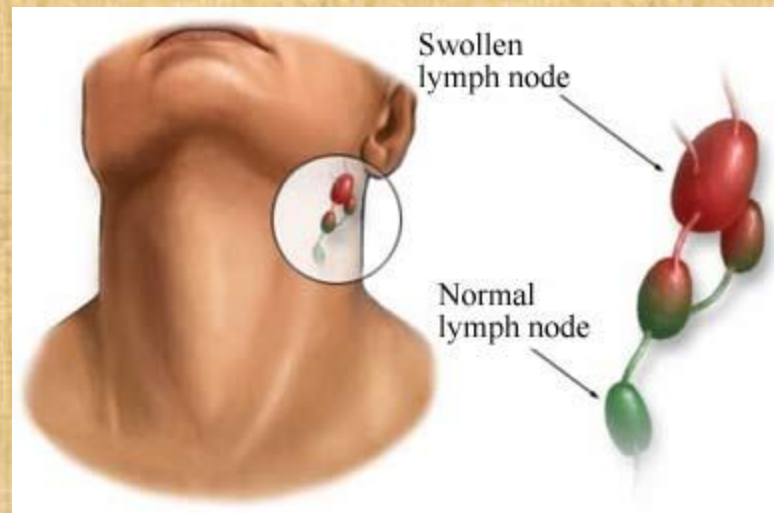
- Axilla



Breast



Cervical area



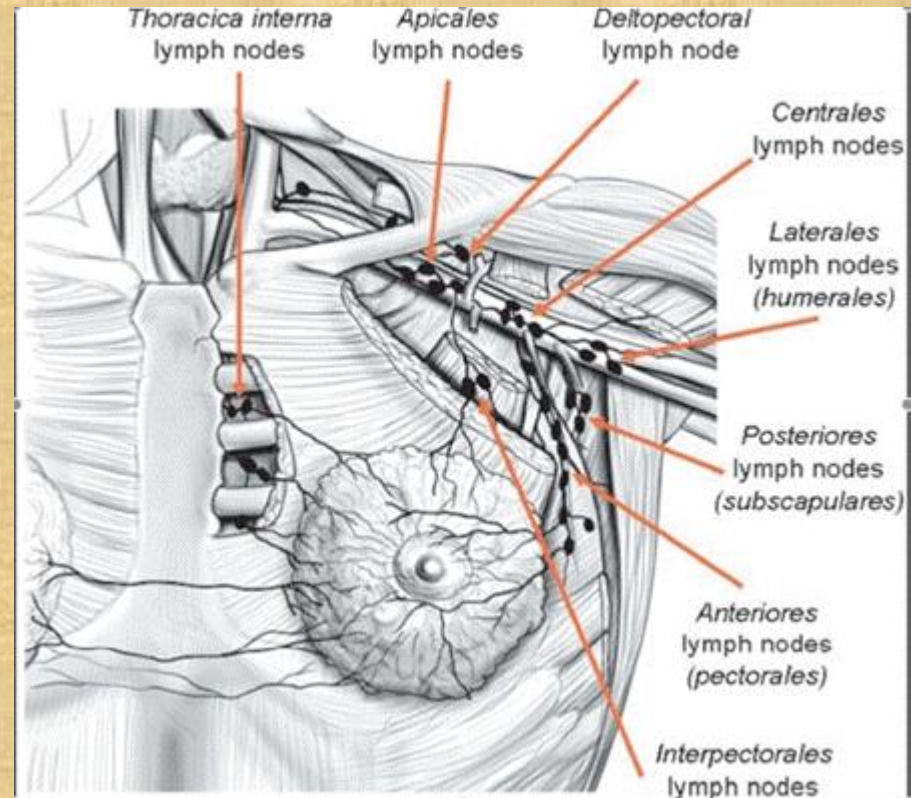
Third ABC stand for

- Abdomen
- Bone and brain
- Chest

Each ABC is further given five points of importance

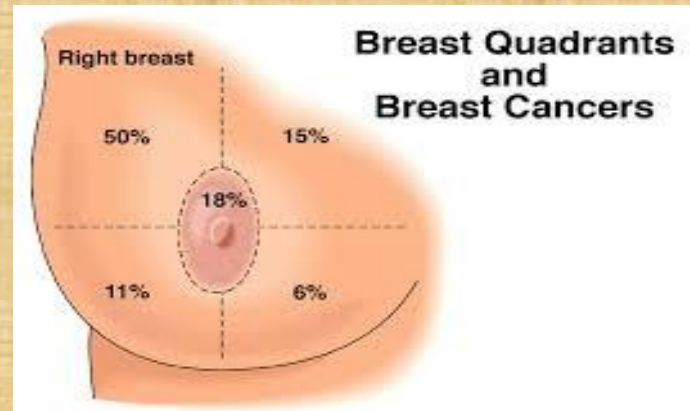
Axilla 5-Points

- 1)Anterior
- 2)Posterior
- 3)Central
- 4)Apical
- 5)Lateral



Breast 5-Points

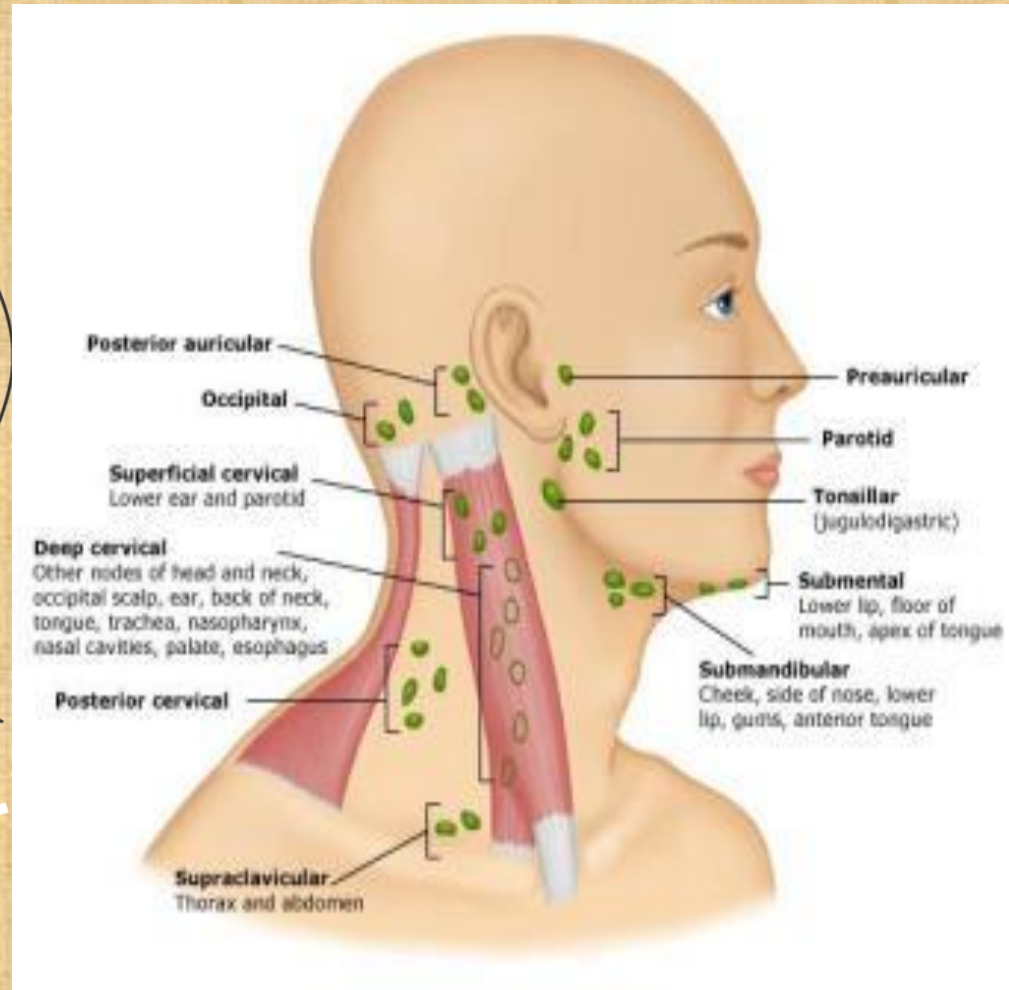
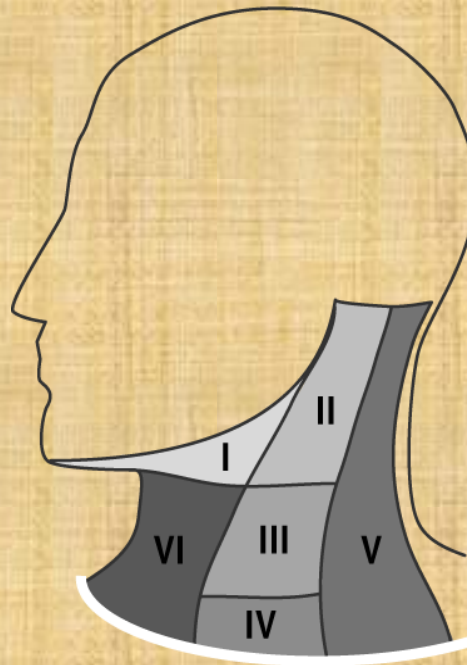
- 1) Central (nipple areola complex)
- 2) Upper medial
- 3) Upper lateral
- 4) Lower medial
- 5) Lower lateral



Cervical area 5-Points

Levels of Cervical Lymph Nodes

- 1) Level I
- 2) Level II
- 3) Level III
- 4) Level IV
- 5) Level V

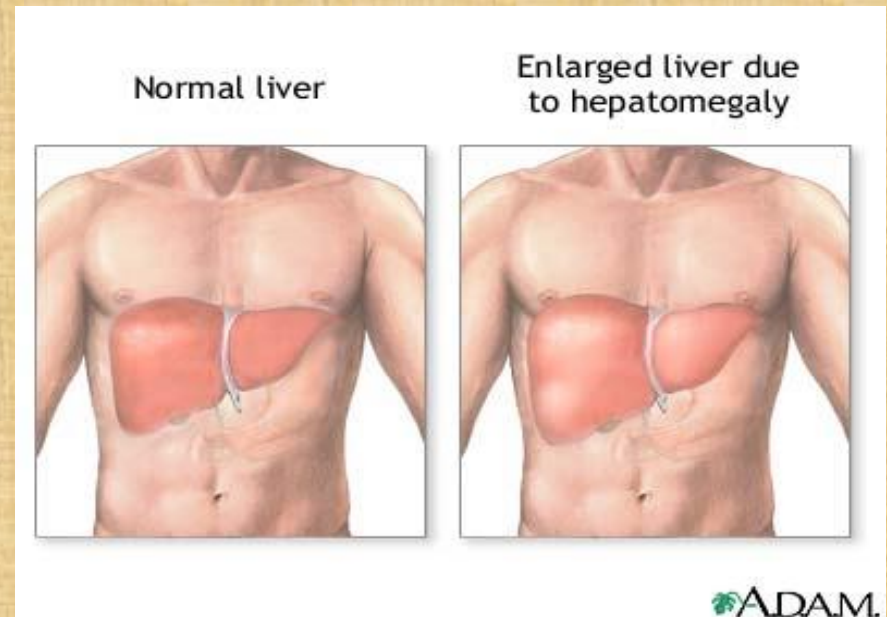
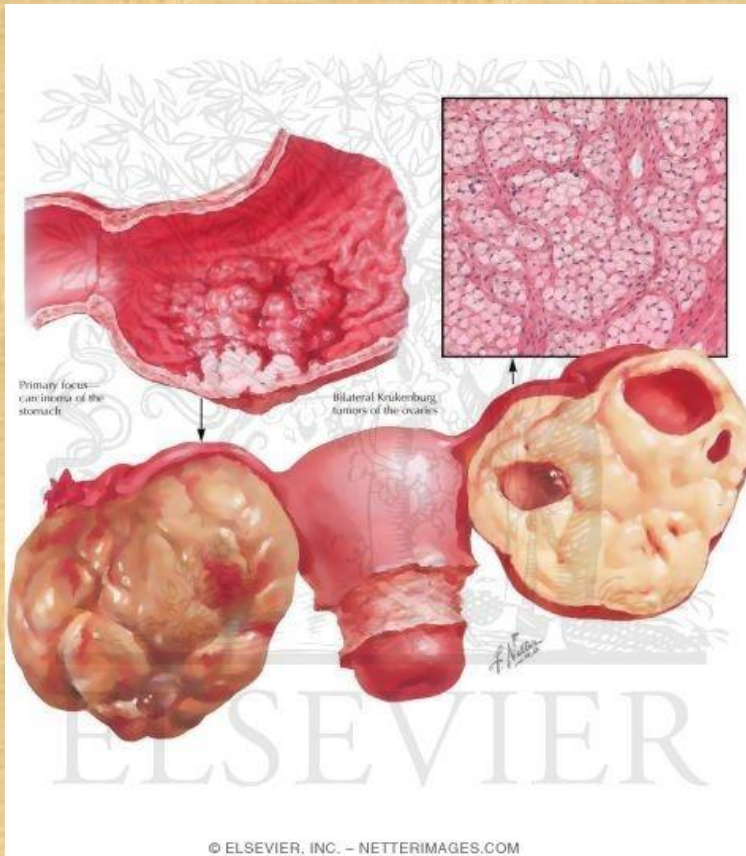


Third ABC

Abdomen 5-Points

1) Lump(krukenberg)

2) Liver

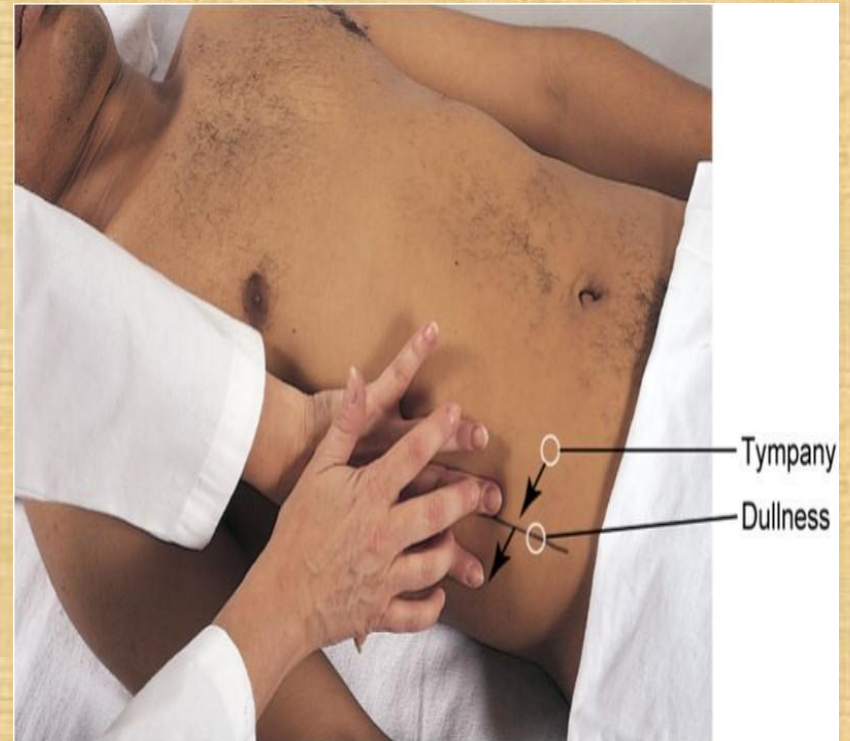


3) Umbilicus



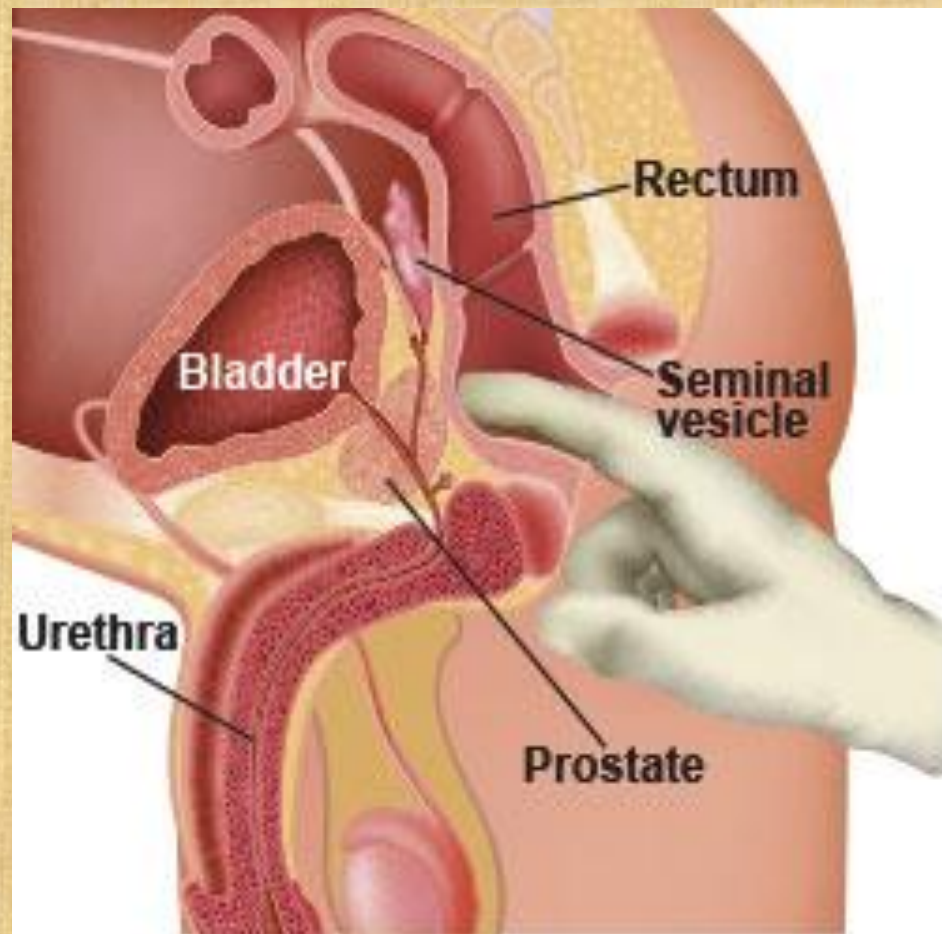
- Sister Mary Joseph nodule

- 4) Shifting dullness



Copyright © 2012, 2008, 2004, 2000, 1996, 1992 by Saunders, an imprint of Elsevier Inc. All rights reserved.

- 5) Digital rectal examination



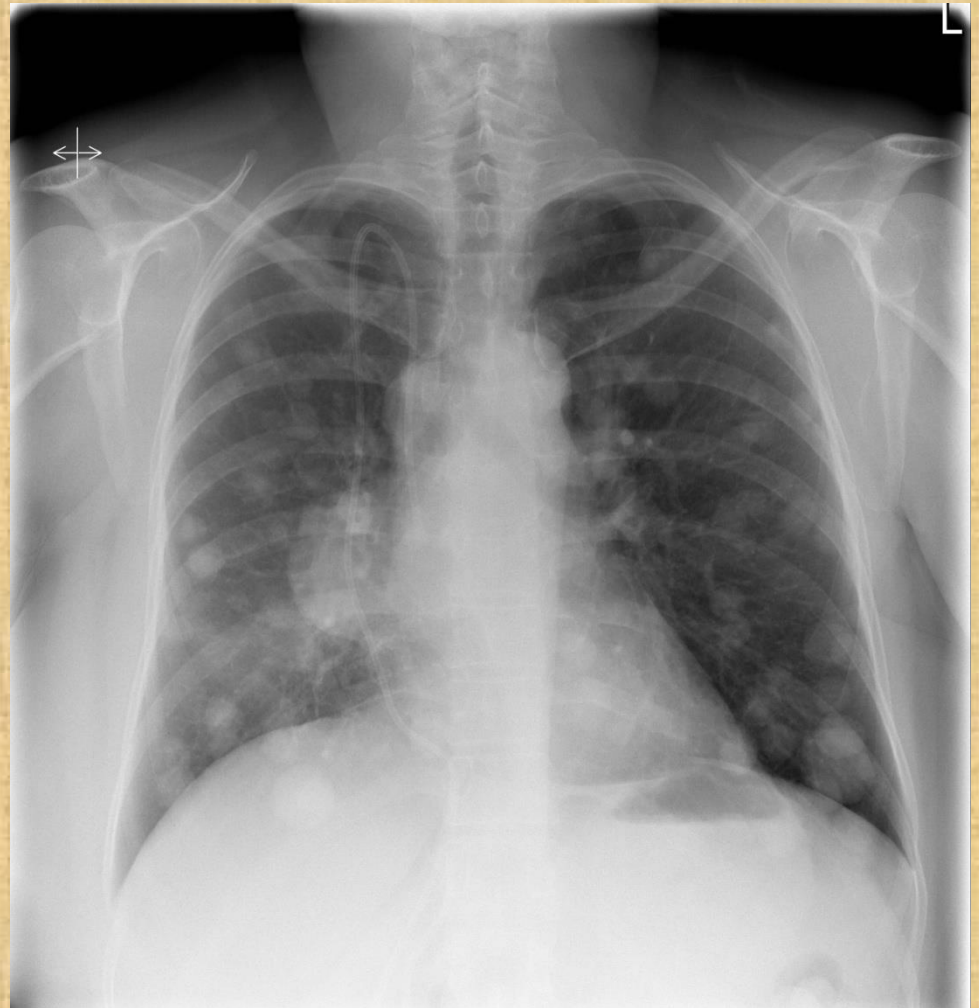
Bone 5-Points

- 1)Vertebrae
- 2)Ribs and sternum
- 3)Proximal femur
- 4)Proximal humerus
- 5)Skull and brain



Chest 5-Points

- 1) Effusion
- 2) Collapse
- 3) Consolidation
- 4) Intercostal fullness
- 5) Ribs



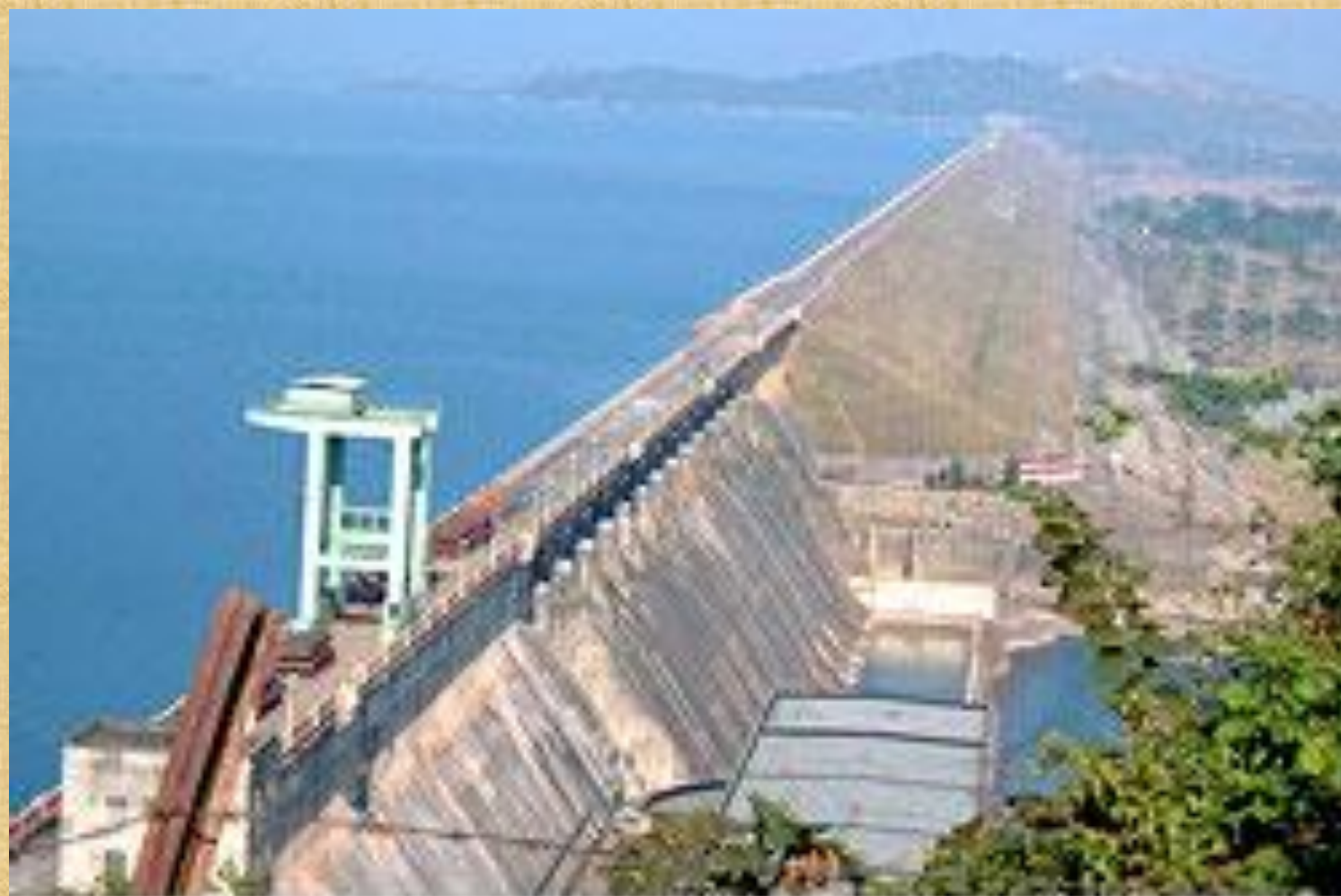
CONCLUSION:

- ❖ For easy recall, each ABC are given five points of specific examination.
- ❖ Can be remembered as A⁵, B⁵, C⁵
- ❖ This can be learned by beginners, experts, paramedics in centre where radiological and pathological assessment is not available.
- ❖ This is also cost effective.
- ❖ Practicing this method in peripheral institution will help in early detection and early referral to advance centre for reducing morbidity and mortality.

REFERENCES:

1. Z. Kaufman, B. Shpitz, M. Shapiro et al., “Triple approach in the diagnosis of dominant breast masses: combined physical examination, mammography, and fine-needle aspiration,” *Journal of Surgical Oncology*.
2. P. Mendoza, M. Lacambra, P. H. Tan, and G. M. Tse, “Fine needle aspiration cytology of the breast: the nonmalignant categories,” *Pathology Research International*, vol. 2011.
3. “The uniform approach to breast fine-needle aspiration biopsy. NIH Consensus, Development Conference,” *The American Journal of Surgery*, vol. 174.
4. K. Dowlatshahi, P. M. Jokich, R. Schmidt, M. Bibbo, and P. J. Dawson, “Cytologic diagnosis of occult breast lesions using stereotaxic needle aspiration. A preliminary report,” *Archives of Surgery*, vol. 122, no. 11, pp. 1343–1346, 1987.
5. W. P. Evans and S. H. Cade, “Needle localization and fine-needle aspiration biopsy of nonpalpable breast lesions with use of standard and stereotactic equipment,” *Radiology*, vol. 173, no. 1, 1989.
6. Y.-H. Yu, W. Wei, and J.-L. Liu, “Diagnostic value of fine-needle aspiration biopsy for breast mass: a systematic review and meta-analysis,” *BMC Cancer*, vol. 12, article 41, 2012.

7. Bland K.I., Beenken S., Copeland E.M., III The Breast. Schwartz's Princip Surg. (9th edition).
8. Iglehart J.D., Kaelin C.M. Diseases of the breast. Sabiston Text Book of Surgery. (19th edition)
9. Yang W.T., Mok C.O., King W., Tang, Metreweli C. Role of high frequency ultrasonography in the evaluation of palpable breast masses in Chinese women: Alternative to mammography. J Ultrasound Med. 1996;15(9):637–644. [PubMed]
10. Pande A.R., Lohani B., Sayami P., Pradhan Predictive value of ultrasonography in the diagnosis of palpable breast lump. Kathmandu Univ Med J (KUMJ) 2003;1(2):78–84. [PubMed].
11. Fischer's Mastery of Surgery (6th edition).



Hirakud Dam

Thank You