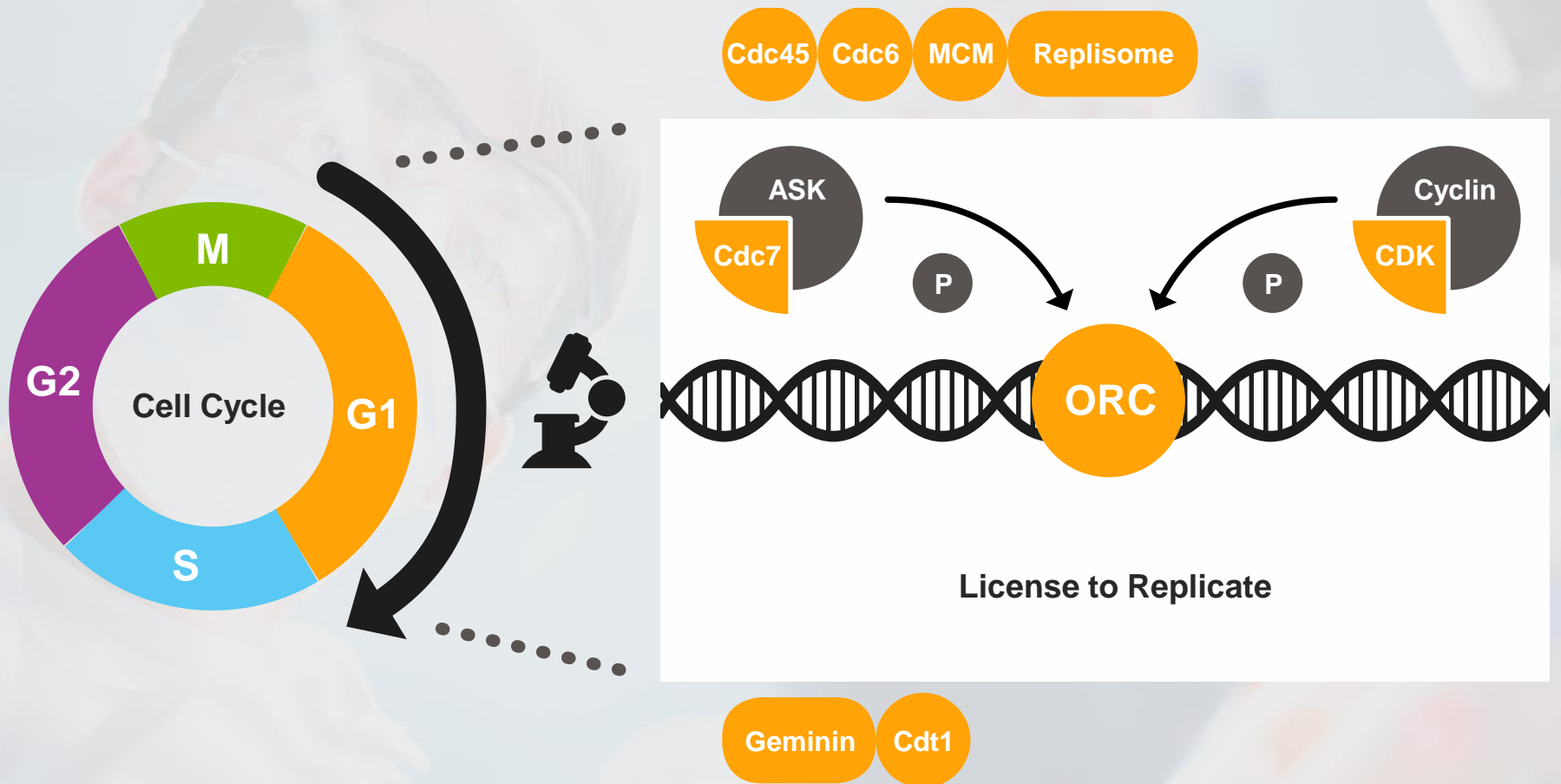


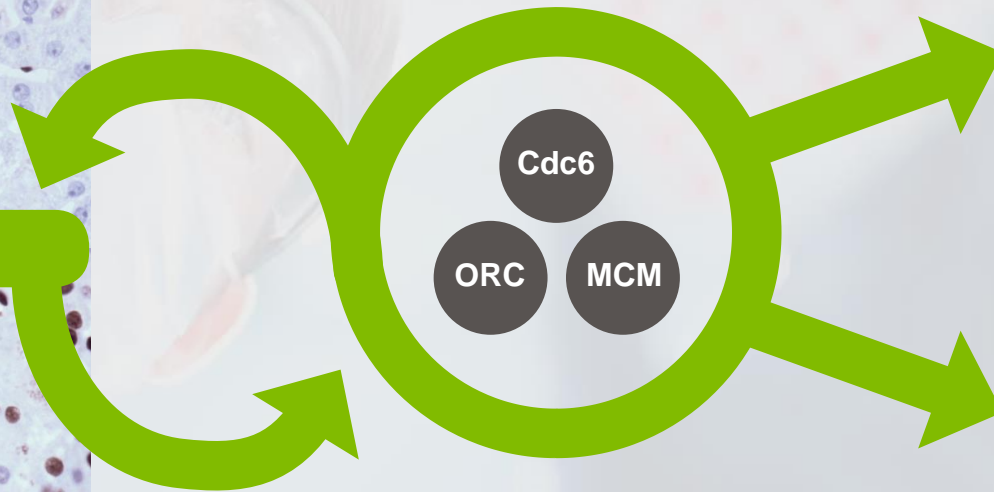
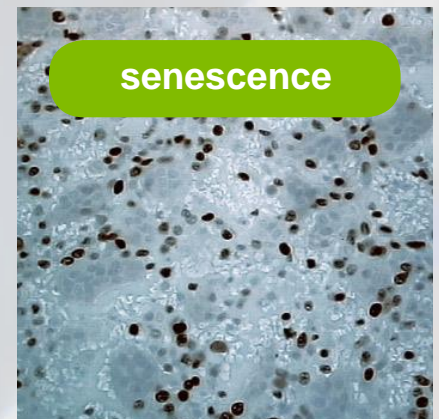


The Cell Cycle Cancer Test


The DNA Replication Initiation Machinery



Three Ways Out of Cycle



Introduction



DNA replication
initiation proteins in
tissue maintenance
and cancer



Introduction

DNA replication
initiation proteins in
tissue maintenance
and cancer

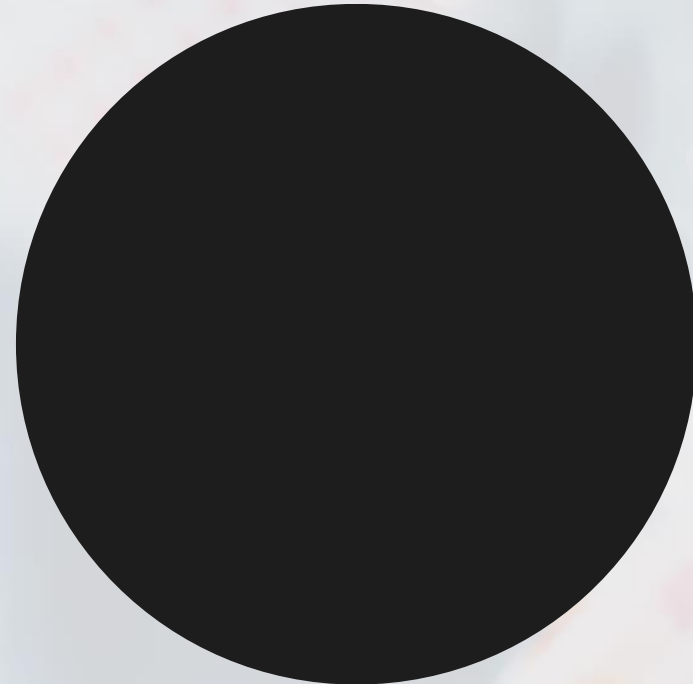
From bench
to bedside – new tests
for cancer detection
and prognosis



From bench
to bedside – new tests
for cancer detection
and prognosis

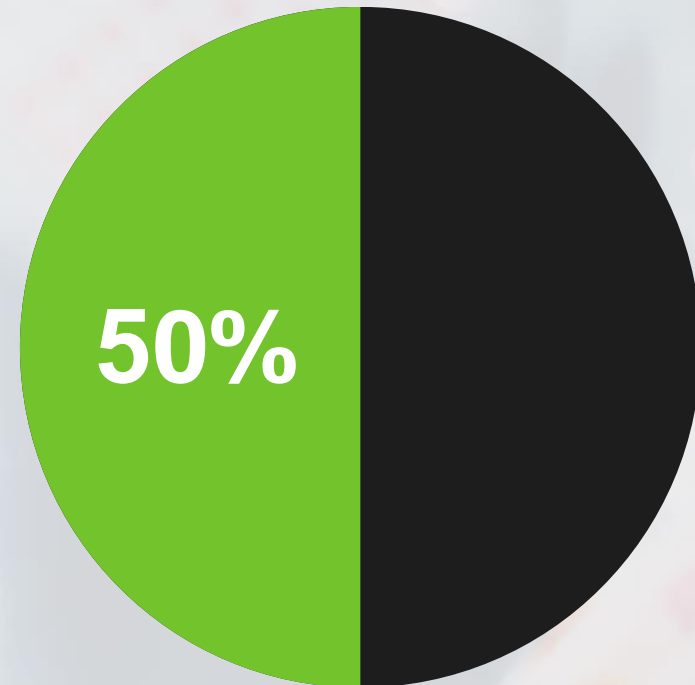
Requirement for Prognostic and Predictive Markers in Breast cancer

50% of patients who receive loco-regional treatment will never relapse, whereas the remainder will die of metastatic disease



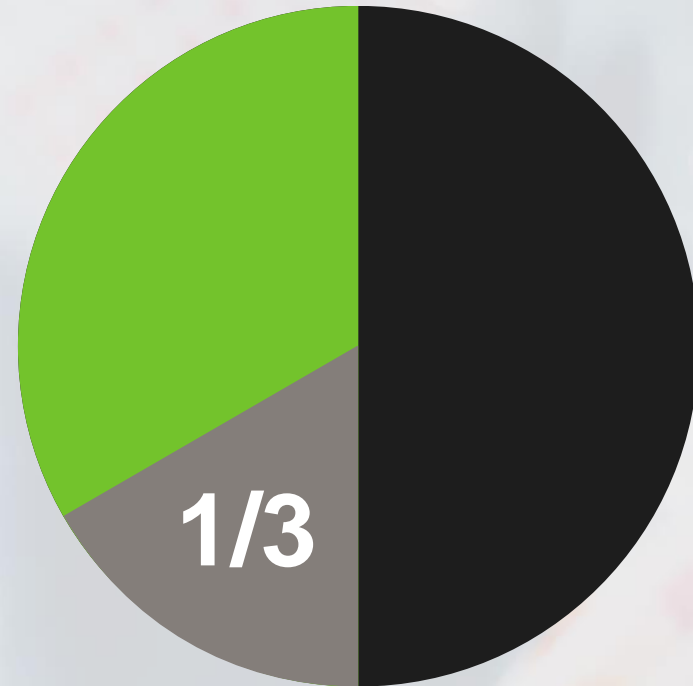
Requirement for Prognostic and Predictive Markers in Breast cancer

50% of patients who receive loco-regional treatment will never relapse, whereas the remainder will die of metastatic disease



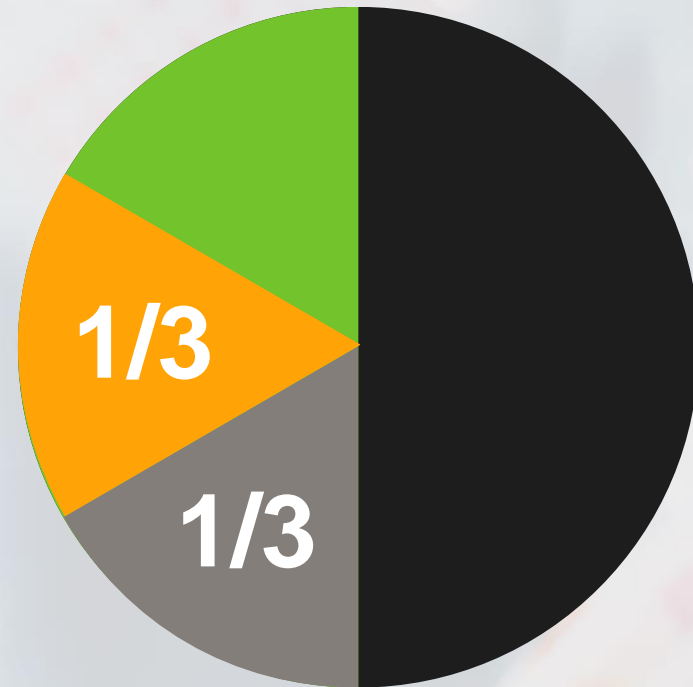
Requirement for Prognostic and Predictive Markers in Breast cancer

1/3 of patients who are node-negative will experience relapse

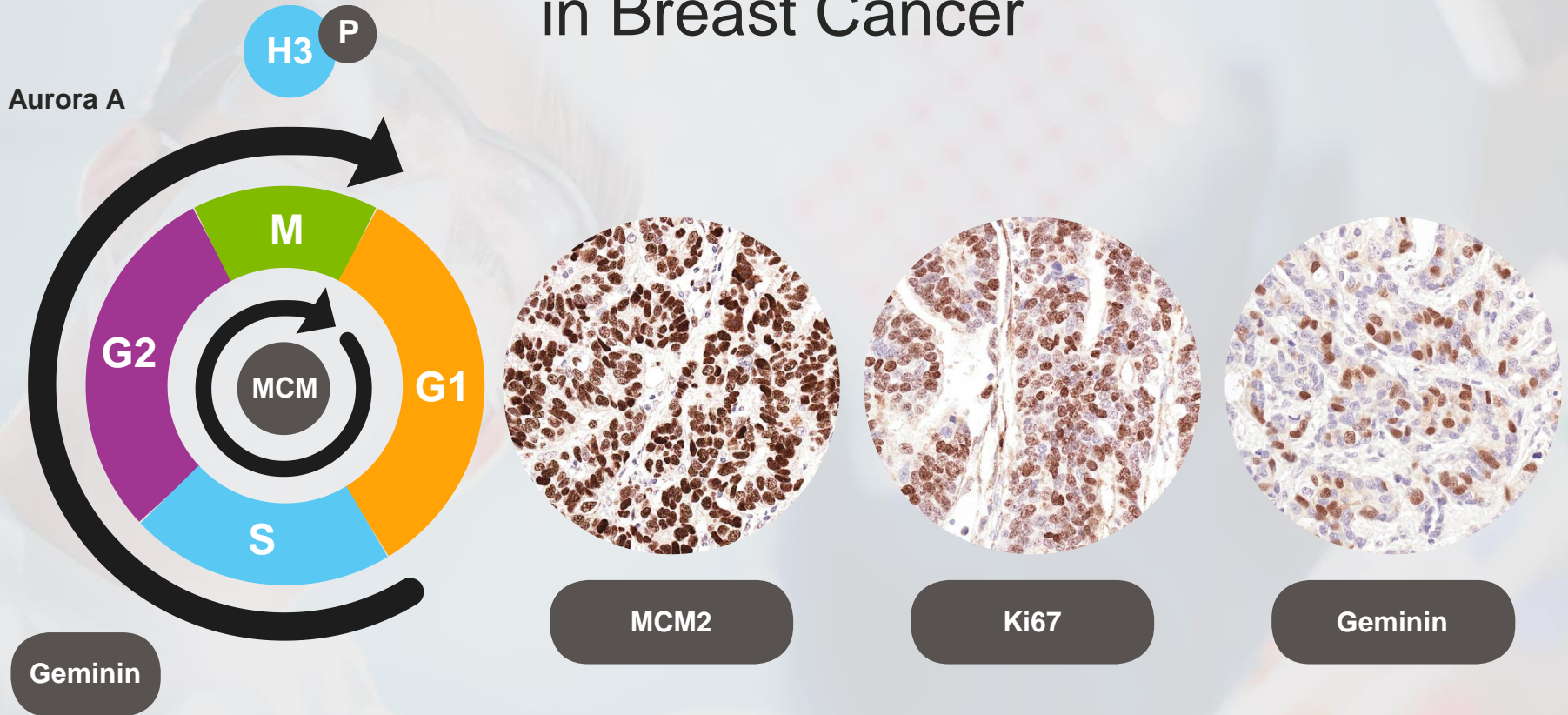


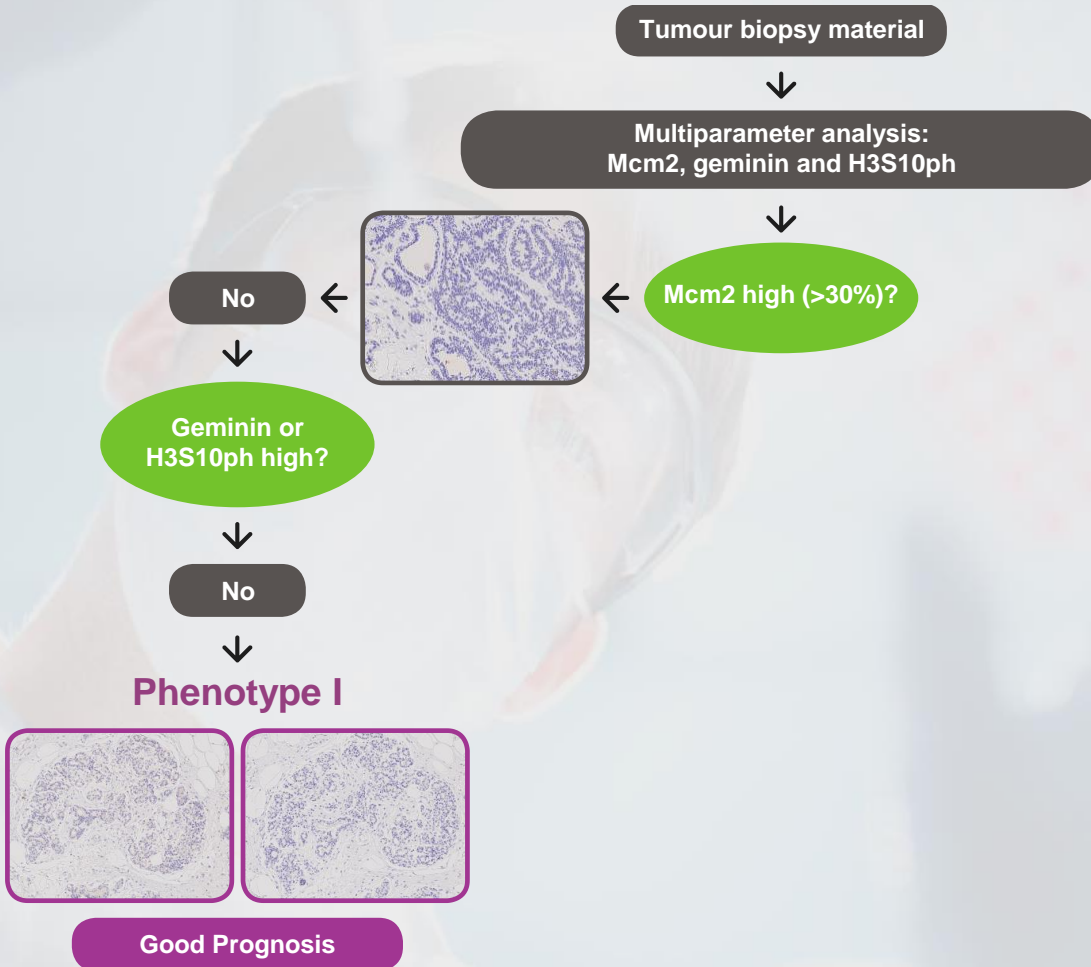
Requirement for Prognostic and Predictive Markers in Breast cancer

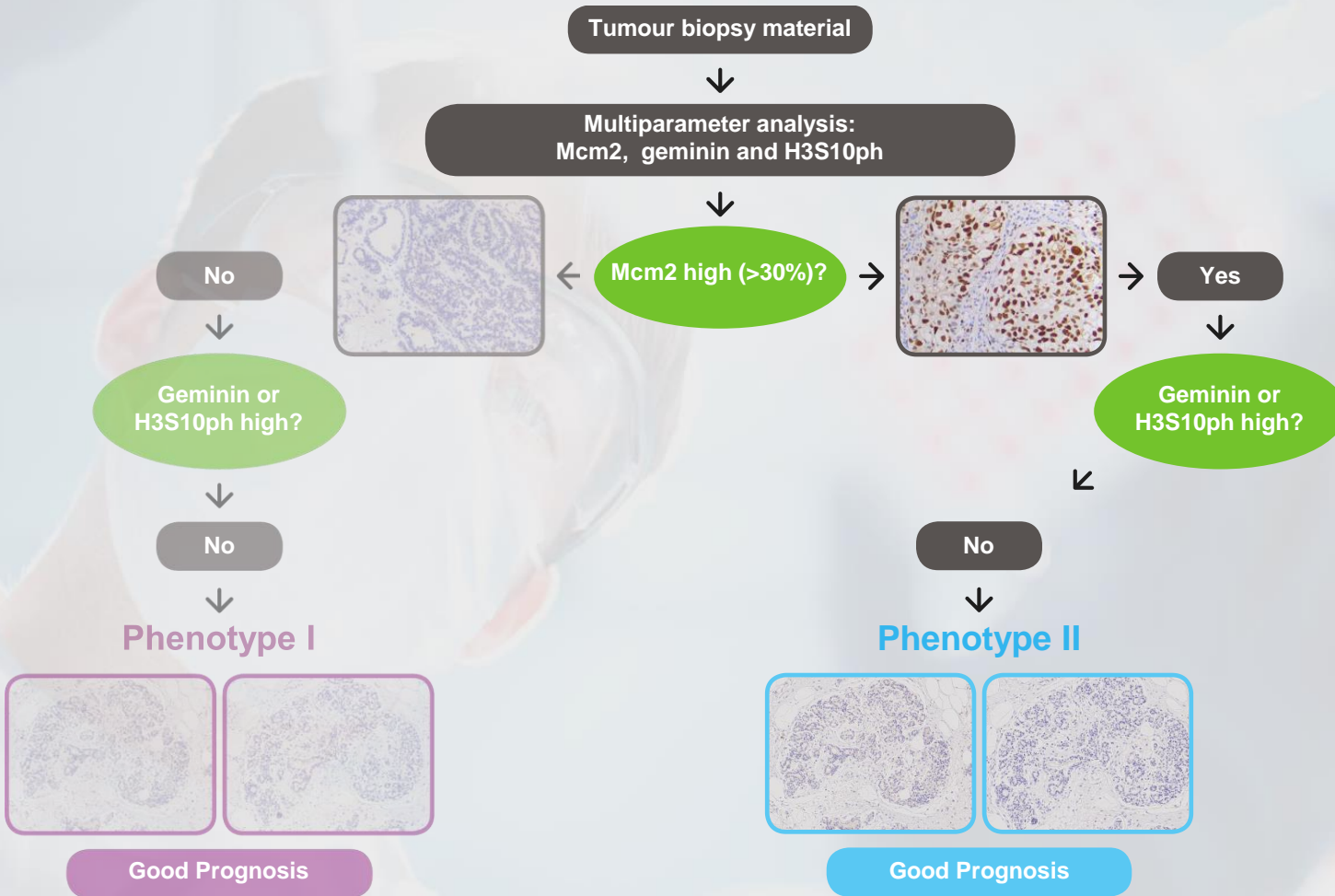
1/3 of node-positive patients not receiving adjuvant therapy will be disease-free after 10 years

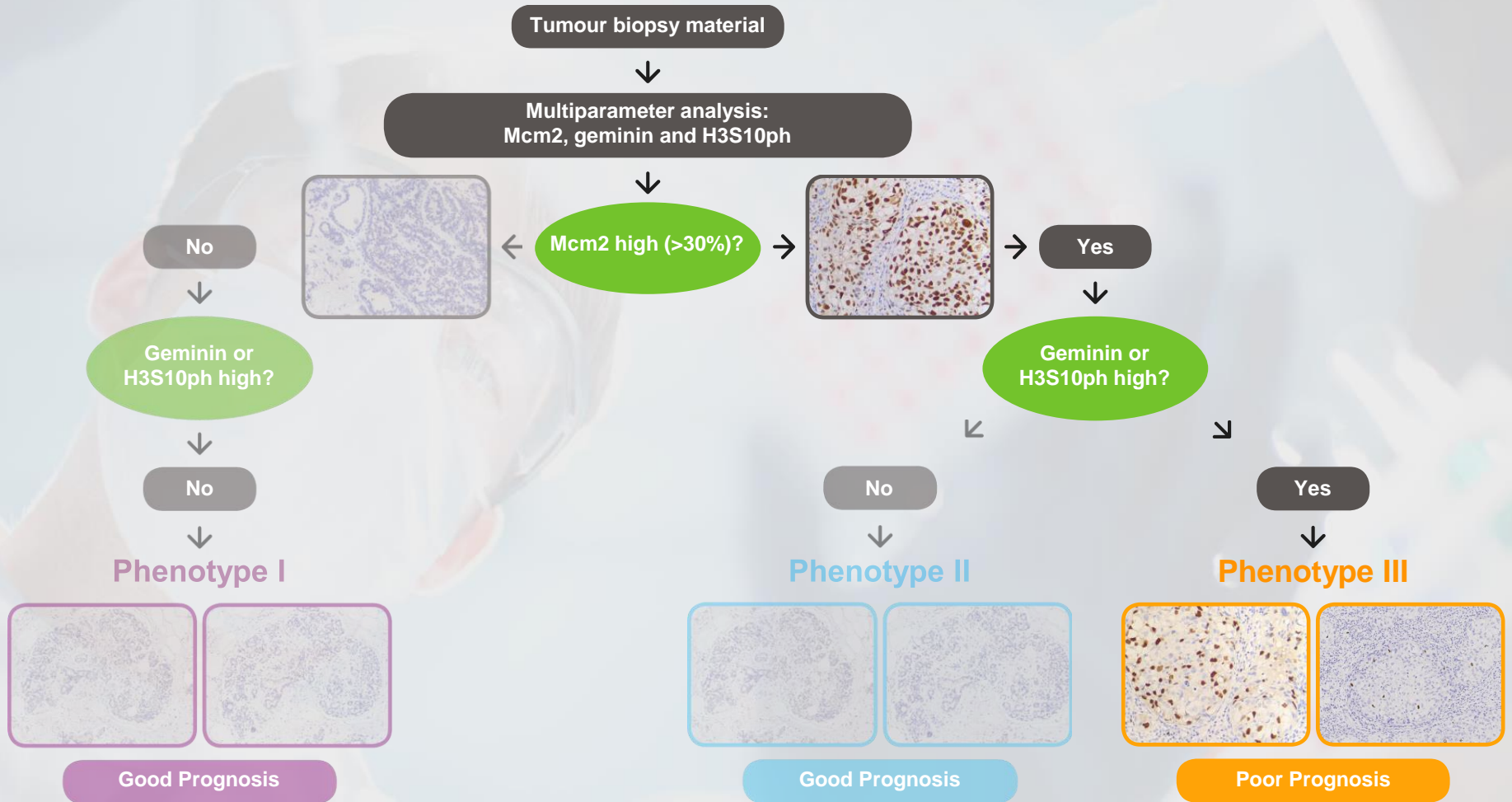


Cell Cycle Phase Progression in Breast Cancer

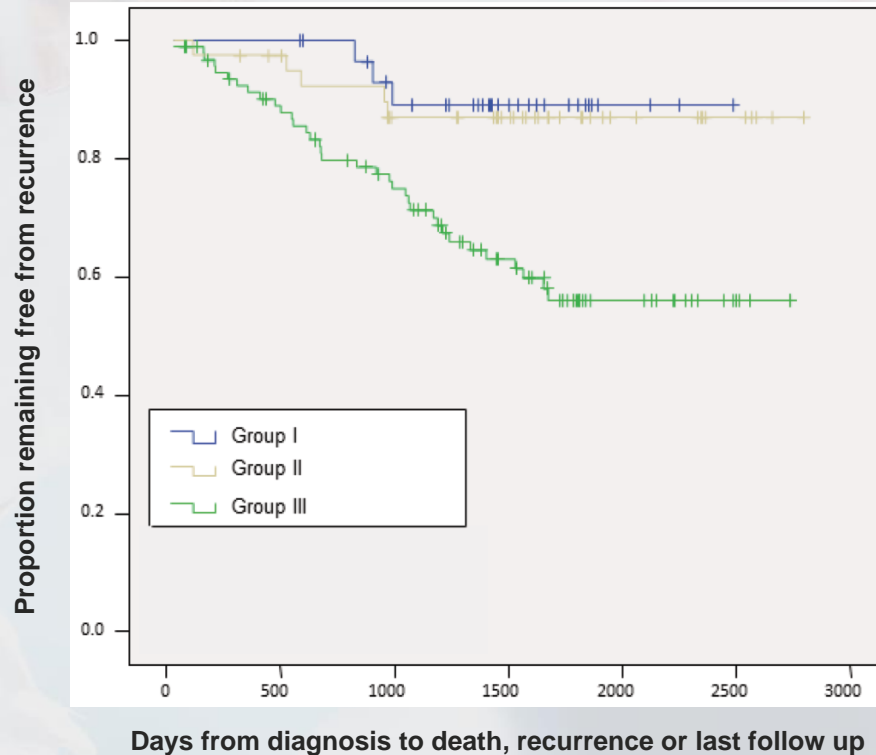


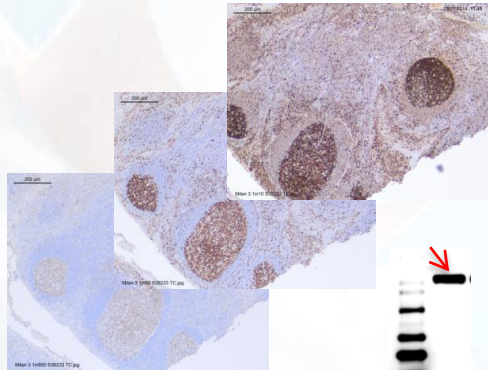
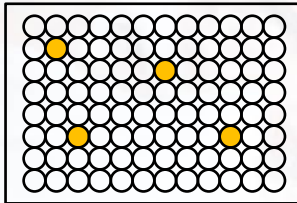






Cell Cycle State Predicts the Outcome of Breast Cancer after Surgery





Immunisation



Clone generation



Clone pre-selection (ELISA)



Clonal stability and Isotype homogeneity



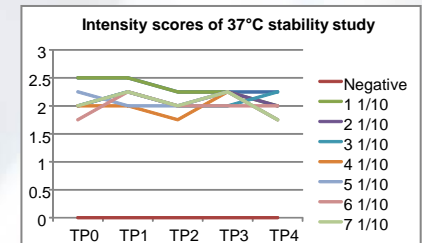
IHC titration and reproducibility



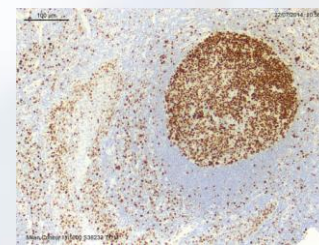
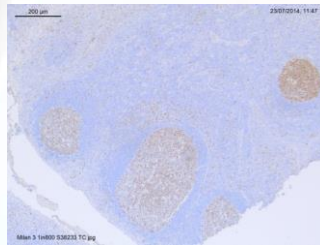
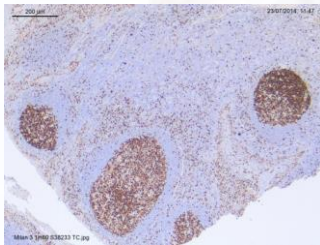
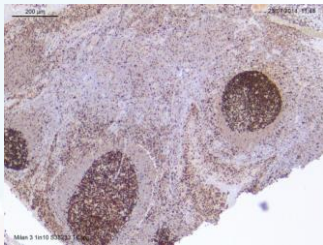
Accelerated antibody stability study



Development



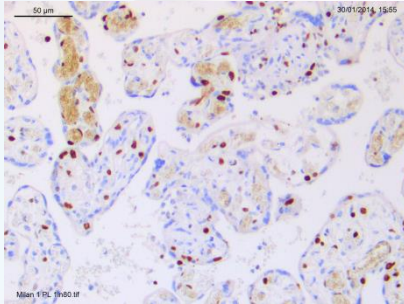
IHC titration curve Mcm2 antibodies



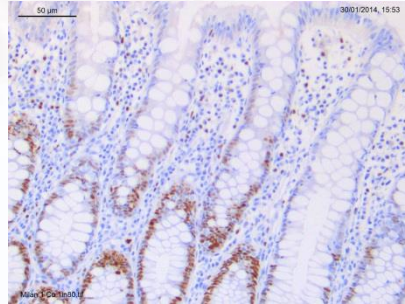
Mcm2 BD Ab

Validation in tissues with **varying expression levels**

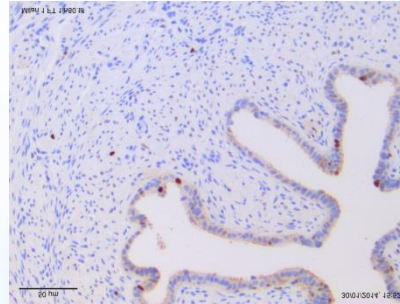
High



Medium



Low



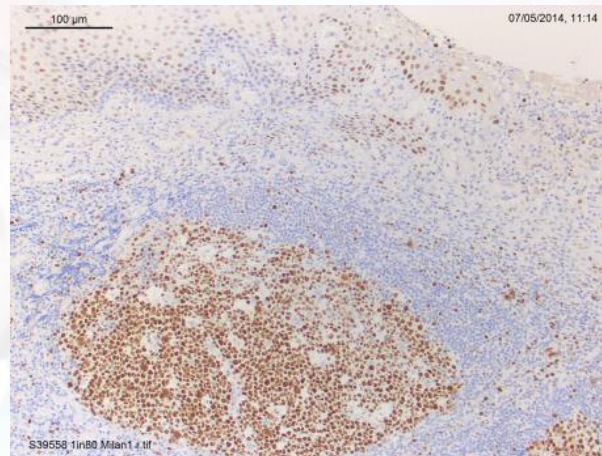
Placenta

Colon

Fallopian tube

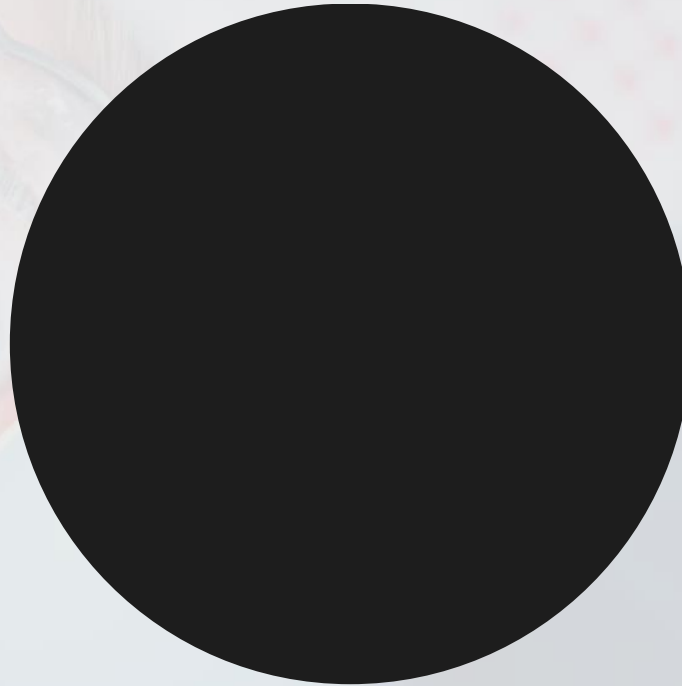
Stability testing of Ab clones

37°C Stability
Study day 80



Select stable clones at a minimum of 18 months equivalent real time

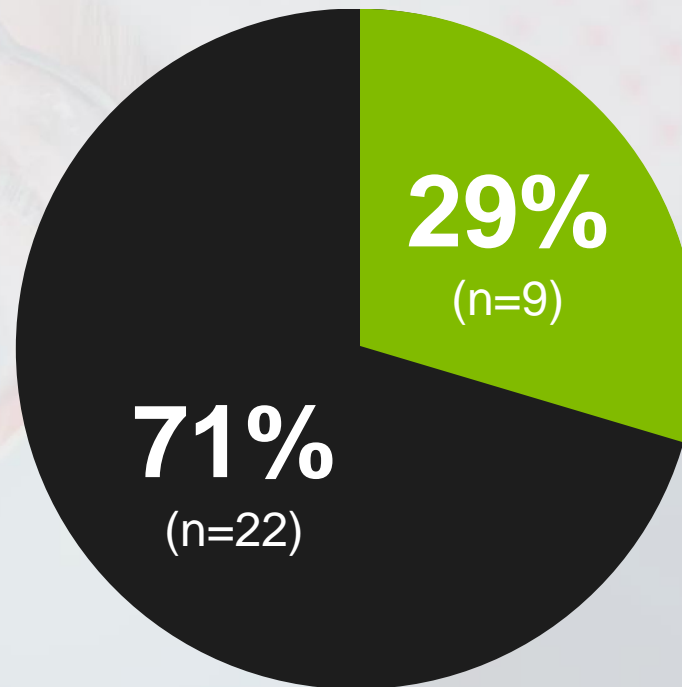
Over and under treatment for patients with breast cancer?



Over and undertreatment for patients with breast cancer?

Phenotype I

24% (18/76) of patients received adjuvant chemotherapy with minimal benefit

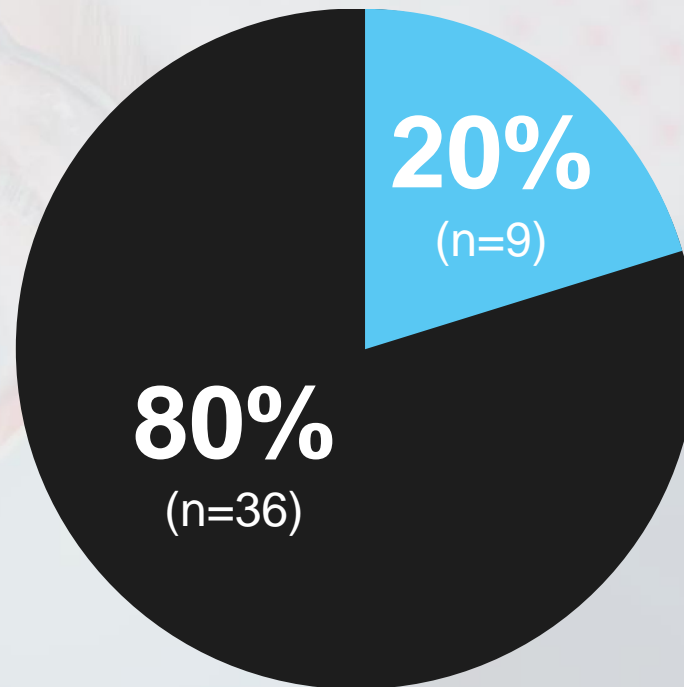


● Chemotherapy ● No Chemotherapy

Over and undertreatment for patients with breast cancer?

Phenotype II

24% (18/76) of patients received adjuvant chemotherapy with minimal benefit

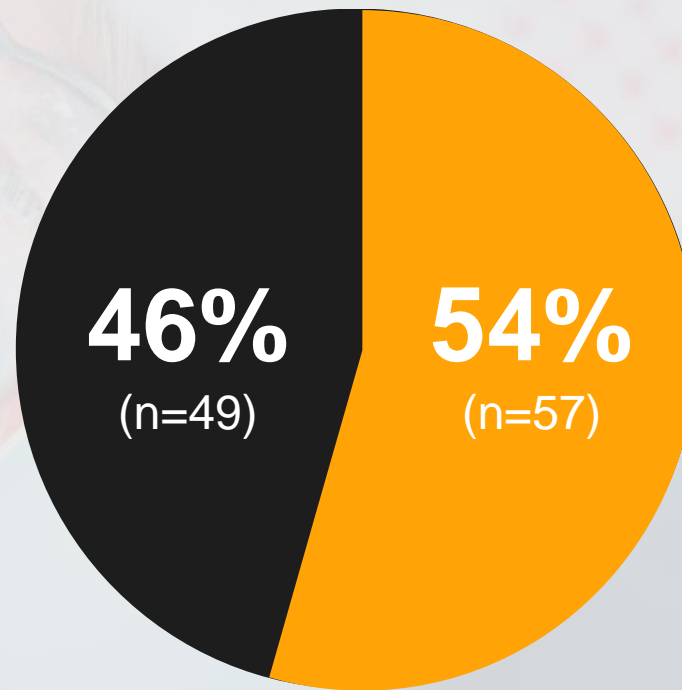


● Chemotherapy ● No Chemotherapy

Over and under treatment for patients with breast cancer?

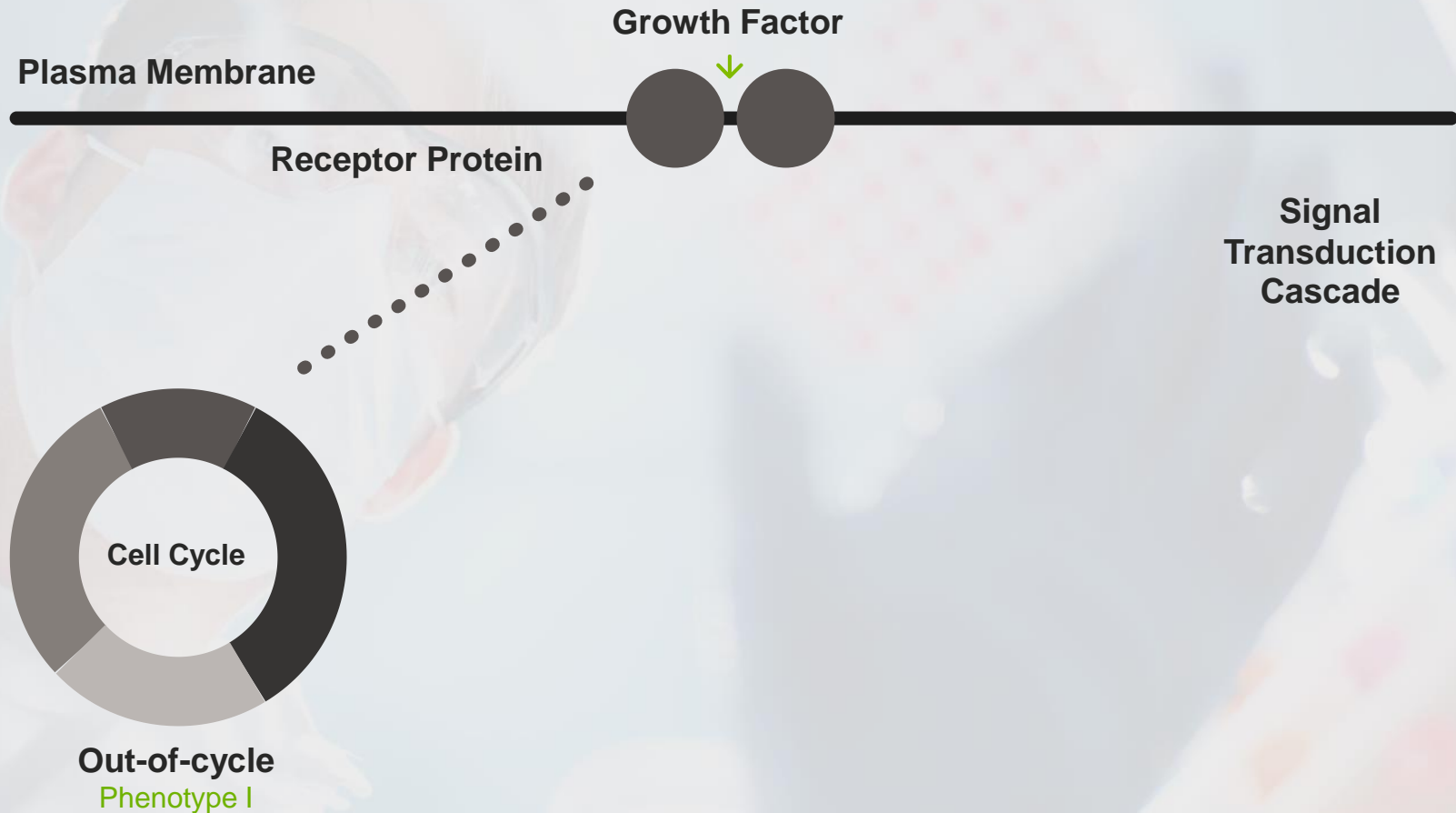
Phenotype III

46% (49/106) of patients did not receive treatment with adjuvant chemotherapy

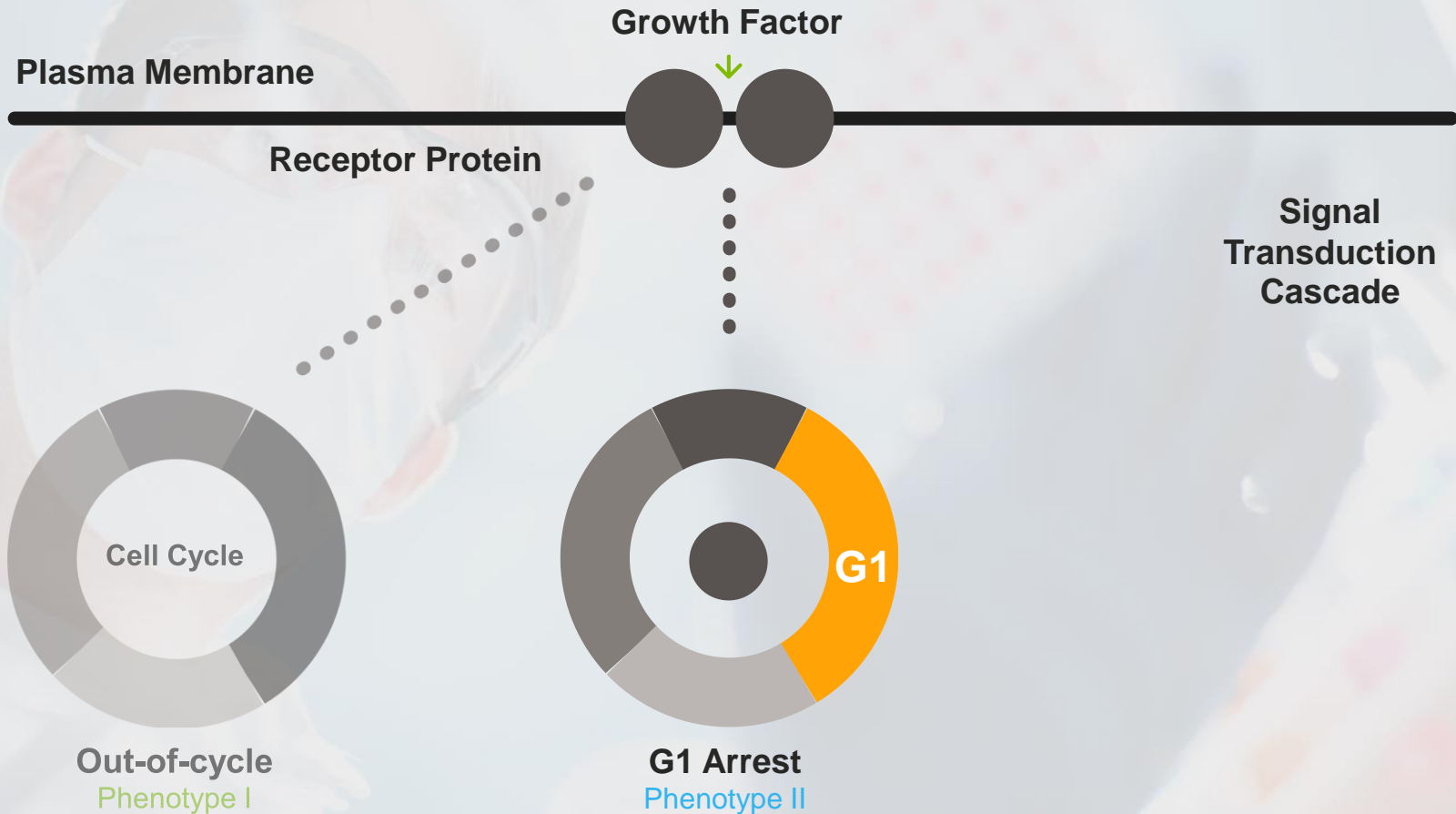


● Chemotherapy ● No Chemotherapy

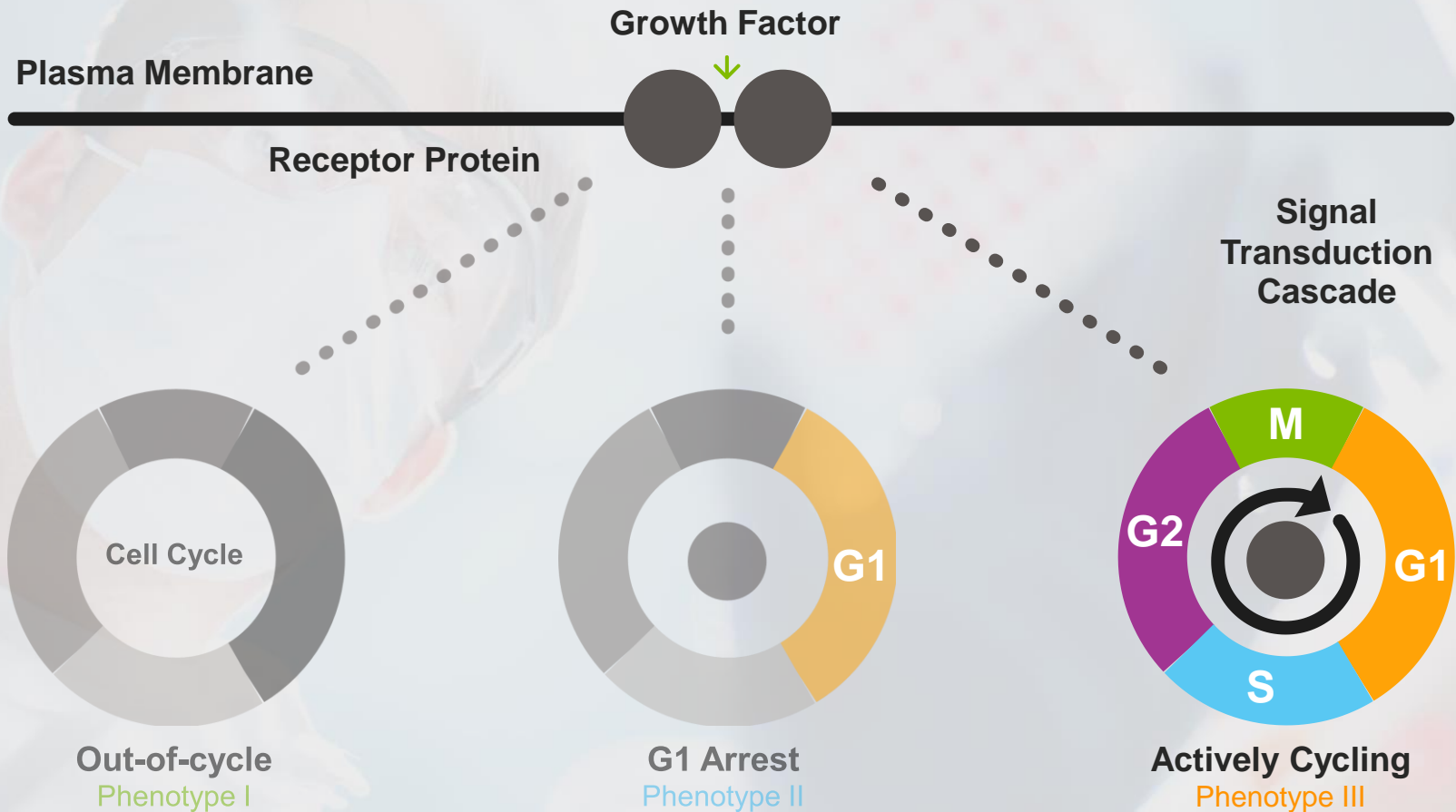
Failed trials? Let FGL find out why...



Failed trials? Let FGL find out why...



Failed Clinical trials? Let FGL find out why...



Advantages

- Can be used for all forms of breast cancer
- Simple, inexpensive IHC based test
- Identification of CT sensitive and insensitive tumours for breast cancers
- Enables patient stratification for clinical oncology trials
- Applicable to FFPE samples

A histological slide showing a dense population of cells with dark nuclei and light cytoplasm/extracellular matrix. There are several large, clear, circular spaces scattered throughout the tissue. A large, dark red, irregularly shaped area is visible in the upper right quadrant. A purple circular overlay is centered on the slide, containing the text "Thank You" and the website address "www.fglabs.com".

Thank You

www.fglabs.com