



Agricultural Knowledge Management Tools and Processes: A Case of Rice Knowledge Management Portal www.rkmp.co.in



Dr. S. Arun Kumar
Scientist (Agril. Extension) and Co-PI
Rice Knowledge Management Portal
Directorate of Rice Research
Hyderabad

Knowledge Management

- A range of practices used in an organization to identify, create, represent, distribute and enable adoption of insights and experiences.
- Such insights and experiences comprise knowledge, either embodied in individuals or embedded in organizational processes or practice
- An established discipline since 1991



Knowledge Management

- Create, capture, analyse, apply, and reuse knowledge
- The process responsible for gathering, analysing, storing and sharing knowledge and information
- It involves the design, review and implementation of both social and technological processes
- Making it available to others



Two tracks of KM

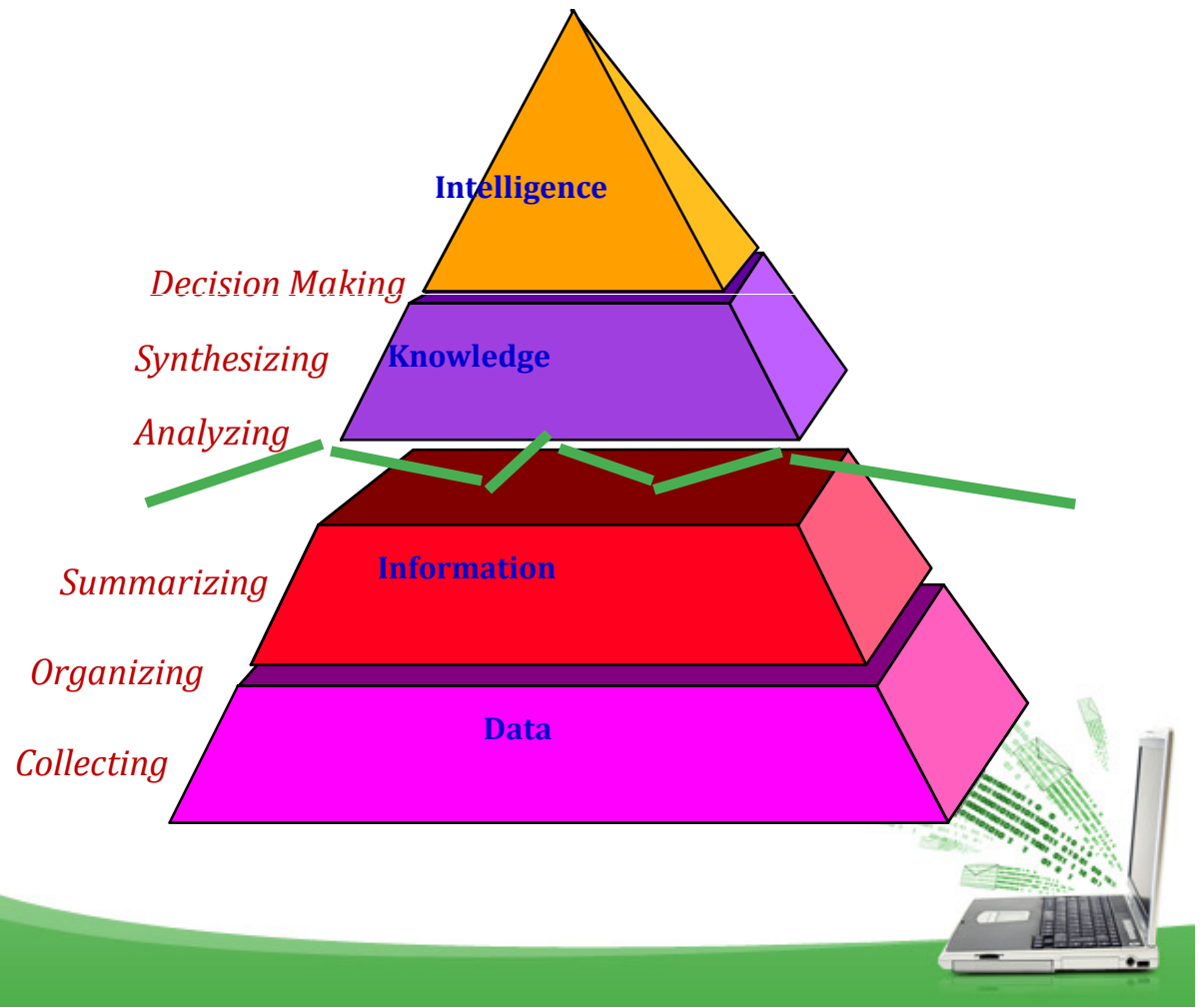
Adapted from Sveiby

One: Management of People

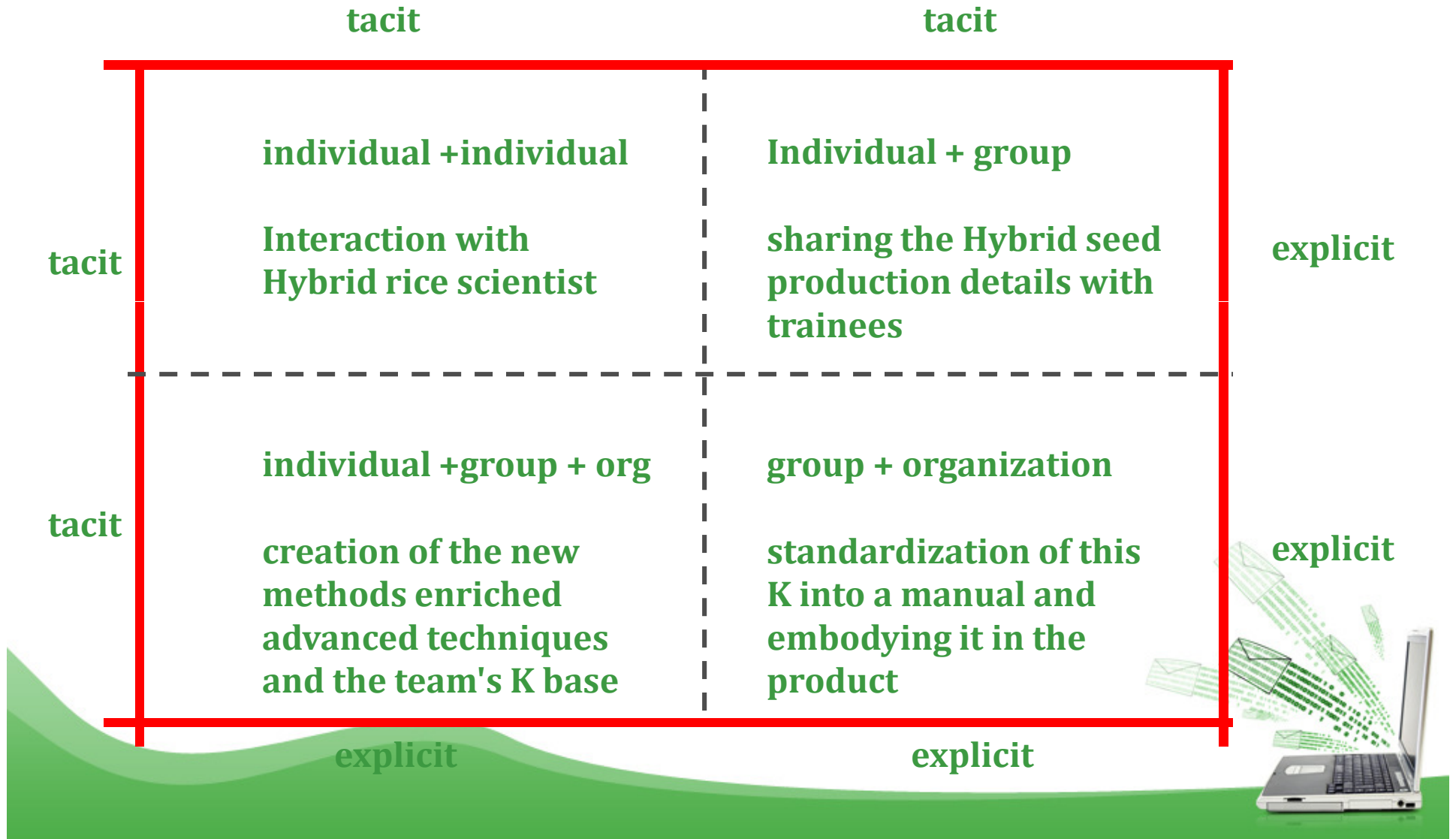
Human
Judgmental
Contextual
Tacit
The transfer requires learning

Two: Management of Information

Codifiable
Explicit
Easily transferable

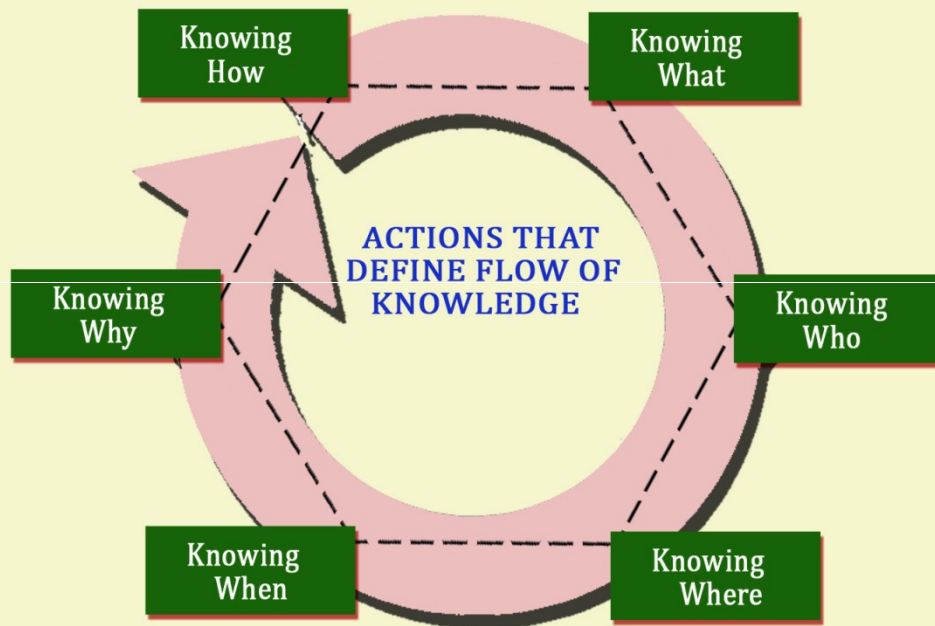


Knowledge conversion: tacit & explicit- drr example



KM- Technologies

Fifteen knowledge management technologies for global organizations



Flow of explicit knowledge happens through different formats (documents, charts, pictures, audio, video etc)

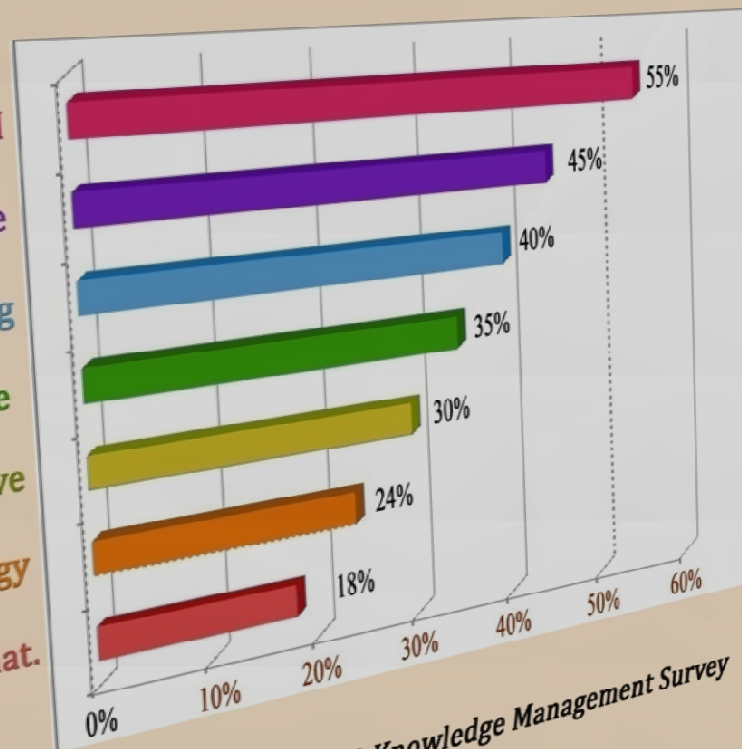
Explicit knowledge is retrieved and shared if it is believable or supported by an expert or practitioner

- Portals
- Business intelligence / data warehousing
- Document management
- Intelligent agents
- Search engines
- Knowledge resource directories / Corporate Yellow Pages
- Customer Relationship Management - CRM / Contact Management
- Messaging / Email
- Groupware or collaboration technologies
- Reminders / Web Calendars
- Decision Support Systems
- Workflow and tracking
- Web Casting
- e-learning / Web based training / multimedia based training / CBT
- Content Management

KM- the Challenges

Challenges to implementing knowledge management program

- Lack of understanding of KM
- Employees lack time for KM Culture
- Does not encourage sharing
- Lack of incentives to share
- Lack of funding for KM initiative
- Lack of Appropriate technology
- Lack of commitment from senior mat.

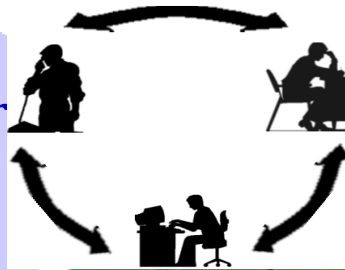


Source: IDC's 1999 Knowledge Management Survey



Rice Knowledge Management Portal Objectives

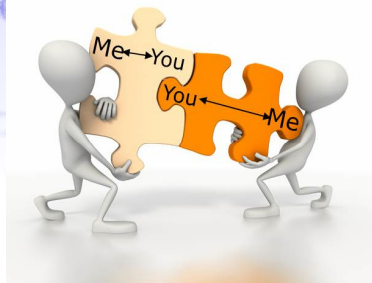
strengthen better flow of rice knowledge in rice sector



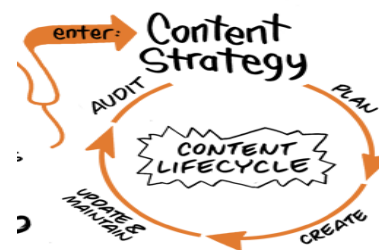
uploading, sharing and harnessing rice knowledge amongst rice stakeholders



build the capacity of the stakeholders



develop structure and content of RKMP



Knowledge Management Portal –Processes defined

- Knowledge flows and Information needs
- Identify workflows and functional requirements
- Benchmarking
- Involvement of Organizations / stakeholders
- Design features
- Information Architecture
- Content Development strategies
- Offshoot applications / Platforms
- Main Portal Development
- Capacity building
- Pilot and refine
- Institutionalize



Significant Achievements

- First national level one stop shop for agricultural knowledge in India
- Synergy of semantic web technologies and rice knowledge
- Harnessing existing AICRIP set up through Knowledge Management Tools
- In built sustainability
- Largest database of location specific content in usable format
- 24x7 learning opportunities in local languages in modular format.
- Transmitting online content through offline delivery mechanism
- Transmitting offline content through digital means





English ▼

Search Rkmp

Search

Rice Knowledge Management Portal

[Home](#) [Research Domain](#) [Extension Domain](#) [Farmers Domain](#) [Service Domain](#) [General Domain](#) [Rice Stats](#) [E-Learning](#)

Rice researchers across the world can access, share, discuss research data, themes, tools & knowledge for better rice science!

- **Data repository of 27000 Datasets & AICRIP Intranet**
- **Rice Vocs - 2773**
- **Research Fora - To capture implicit knowledge from individual experts in rice research and development institutes**
- **Bio-informatics tool**
- **Guidelines**

- **Directory of Rice Researchers**
- **Tools and techniques**
- **E- Books/ E- Manuals -28**
- **Rice State wise -17**
- **Research Themes -21**
- **India Rice Research Repository**
- **History of Rice Breeding**
- **Rice Research in India**



AICRIP Intranet (www.aicrip-intranet.in)

www.aicrip-intranet.in



Rice Knowledge Management Portal

- Home
- AICRIP Home
- Plant Breeding
- Physiology
- Entomology
- Plant Pathology
- FLD

Data sharing
MIS for AICRIP
centers

LOGIN

UserName:

Password:

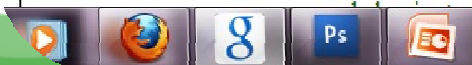
The All India Coordinated Rice Research Programme of the Directorate of Rice Research provides an effective linkage for rice research in the country. The programme involves universities, national institutes, and departments of agriculture, agrochemistry, entomology and others. The objectives of the programme are:

To accelerate genetic improvement of rice for resistance against major diseases occurring in different ecosystems in the country.

- To provide a testing mechanism to assess the advanced breeding lines over a wide range of climatic, cultural, soil and disease epidemic conditions.
- To identify broad spectrum of resistance to major rice diseases.
- To monitor and evaluate the genetic variation of rice pathogens.
- To monitor the prevalence of diseases in the country.
- To develop need based disease management methods.
- To identify production constraints in different ecosystems.

To achieve these objectives, under coordinated plant pathology programme every year more than 15 trials are conducted at 53 locations (including both funded and voluntary centers) on host plant resistance, field monitoring virulence of blast and BLB, disease observation nurseries and disease management methods.

Production Oriented Survey (POS): In addition to the Plant Pathology coordinated trials, the concerned plant pathologists from most of the centers will take the lead to conduct production oriented survey in every year. Production oriented survey (POS) provides the information on different aspects of rice cultivation and farmers practices during cropping seasons. In the last decade almost 23 AICRIP centers in 17 states were involved in collecting such information and the states included viz Andhra Pradesh, Bihar, Chhattishgarh, Gujarat, Haryana, Jammu and Kashmir, Jharkhand, Karnataka, Madhya Pradesh, Maharashtra, Orissa, Puducherry, Punjab, Tamil Nadu, Tripura, Uttar Pradesh and West Bengal. The survey team also included the scientists of Directorate of Rice Research and its cooperating centers located in different states



Data Repository



Search
27000
AICRIP Datasets

Search for

Year

Volume

Season

Discipline

Go

Welcome to the Data Repository of RKMP!

RKMP believes in the data-information and knowledge transformation continuum. We bring to you a huge database of about 27000 datasets related to AICRIP multi-location trials conducted for last 45 years across the country.

With effective tagging based on disciplines, year, season in searchable pdf format, the RKMP is catering to data requirements of rice researchers of the country.

The Directorate of Rice Research continues its multi-location All India Coordinated Rice Improvement Programme (AICRIP) with active partnership of 47 funded cooperating centers affiliated to State Agricultural Universities (SAUs), State Department of Agriculture and other Research Institutes of ICAR. Besides, over 50 voluntary centers participate in this multi-location testing program. AICRIP with its 45 years of useful existence has contributed significantly in overall rice production front which has ensured food security for the country.

It is the data about these lines and their performance that can make a difference, if used and reused effectively.

Username

Password

Login

[Register](#) | [Forgot Password ?](#)

Happy browsing!



English ▼

Search Search

Rice Knowledge Management Portal

[Home](#) [Research Domain](#) [Extension Domain](#) [Farmers Domain](#) [Service Domain](#) [General Domain](#) [Rice Stats](#) [E-Learning](#)

Extension Domain caters to the rice extension professionals: to access, share, discuss, update the location specific rice knowledge towards excellence in extension services!

- **Production know How -1186 topics**
- **Package of Practices -1849 topics**
- **Recap sheets**
- **Weed Management and Weed Information System**
- **Indigenous Technical Knowledge**
- **Frontline Demonstrations**
- **Farmers Innovations**
- **Fertimeter**

- **Diagnostic tools**
- **Digital Photo Library - 522**
- **Spot Nearest Research/ Extension office**
- **Concept Maps**
- **Government Schemes -75**
- **Extension Methods -68**
- **FAQS -459**
- **Protection Concerns of the month**



Diagnostic Tool



Diagnostic Tool

Home

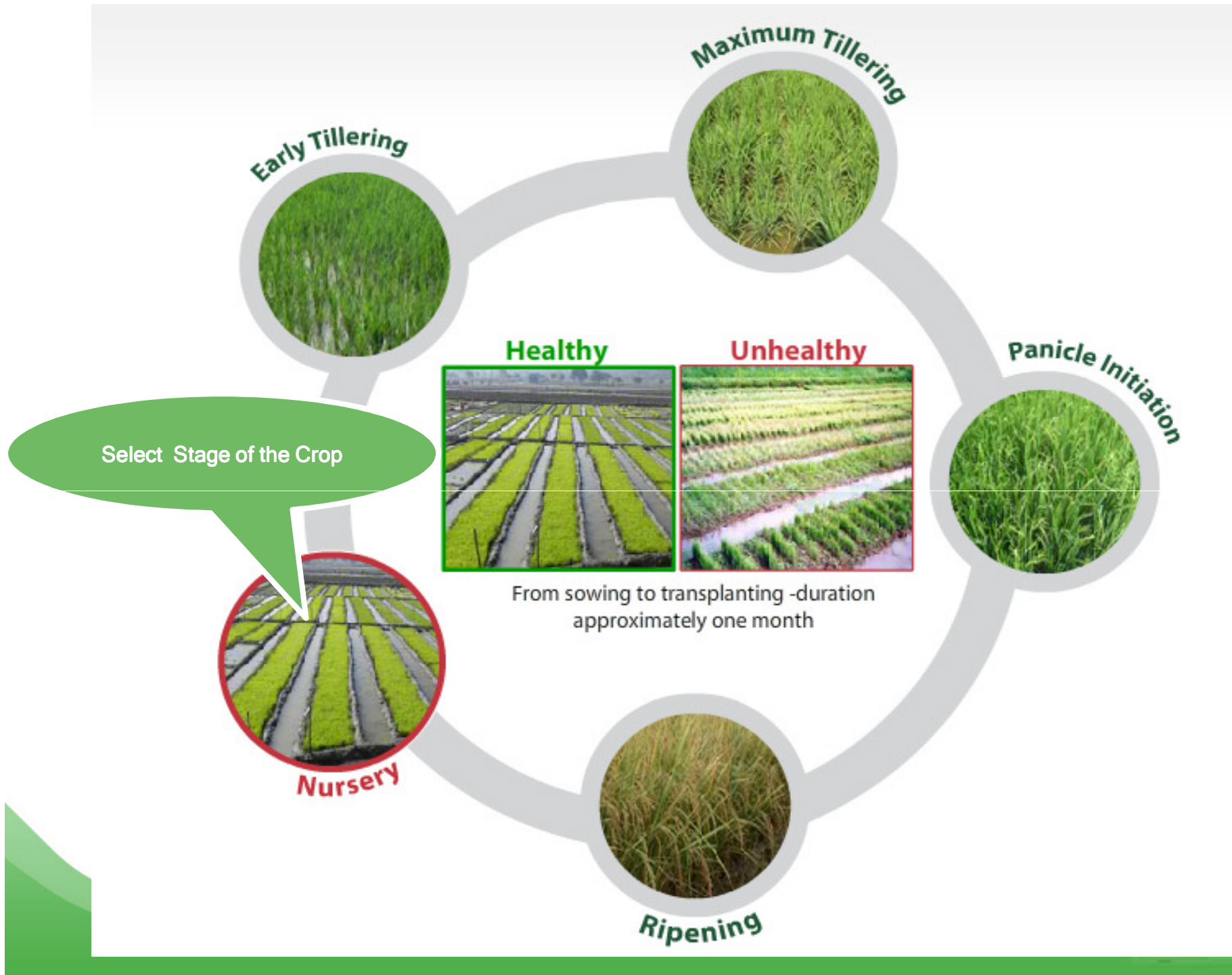
Diagnostic Home

Find

Welcome to Image driven Rice pest and disease diagnostics



Welcome to the exciting completely image driven rice pest and disease diagnostic tool. This has been designed to help extension workers, farmers and other stakeholders in identifying the field problems they face in Indian rice fields. The diagnostics is basically



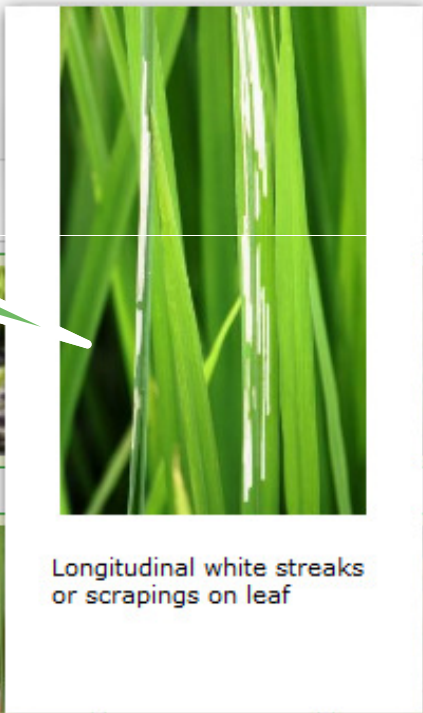
Stage Causal Factor

Stage Symptoms Confirmation



The nursery stage is period from seed germination to formation of five leaves before tiller initiation and transplanting. Healthy Nursery looks uniformly green with good growth and plant stand without any visible symptoms of stress. You can achieve this by selection of right variety, good quality seed, proper land preparation, water management and fertilizer management.

Select the Symptoms



Longitudinal white streaks or scrapings on leaf



ck=symptoms&id=2

Stage Causal Factor

Stage Symptoms Confirmation

Does your observations correspond with the following?



Longitudinal white streaks or scrapings on leaf



Black spiny metallic beetles feeding on leaves



The flat white grubs tunnel below the leaf surface like leaf miners

Confirm the Symptoms

If yes [click here](#). If not see below and click on relevant image

The symptoms may be confused with the following



White scrapings on leaf due to feeding




Stage Symptoms Confirmation


Hispa (Know [more](#) about this pest)

Scientific Name : (*Dicladispa armigera* (Olivier))

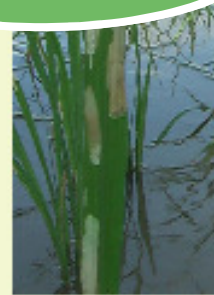



Longitudinal white streaks or scrapings on leaf 



Black spiny metallic beetles feeding on leaves 

Get the Pest Management Information



The flat white grubs tunnel below the leaf surface like leaf miners 

Diagnosis

1. Translucent white patches that are parallel to the leaf veins similar to that of leaf folder blue beetle and case worm damage
2. Can be differentiated by absence of leaf folds and presence of spiny black metallic beetles feeding on the upper surface of leaves
3. White, grub like larvae are seen mining through leaf tissues

Manage the Pest

What to do?

Spray quinalphos 25EC @ 2000 ml/ ha or monocrotophos 36 WSC @ 850 ml / ha or chlorpyrifos 20 EC @ 1500 ml/ ha

When to do?

Insecticide interventions are required only when hispa population exceeds 2 adults or larvae per seed bed.

Why to do?





English ▼

Search Rkmp

Search

Rice Knowledge Management Portal

[Home](#) [Research Domain](#) [Extension Domai](#) [Farmers Domain](#) [Service Domain](#) [General Domain](#) [Rice Stats](#) [E-Learning](#)

Farmers domain is a platform for the rice farming community to access, share, discuss, update the location specific rice knowledge in local languages!

- Production know How -1362 topics
- Package of Practices -1795 topics
- Weed Management -254 topics
- Farmers Innovations

- Audio- Video Gallery -1558 & 29
- Digital Photo Library -522
- Experts Answers on Rice
- Government Schemes -91





Best View: Home >> Farmers Domain >> Uttar Pradesh >> Package Of Practices



Announcements

Content in Hindi
Uttar Pradesh as
default

Upload new Content

Search Farmers Domain:

Search

Uttar Pradesh

Cloud Tag

Protection with vernacular Name
Recommended POP
Popular Varieties
Research Domain
Production Knowledge
Production Knowledge

more tags

Upload Opportunity

Upload content
with single click



रासायनिक समूह के आधार पर

24
Aug

Contributed by rkmp.drr on 24 Aug, 2011

रासायनिक समूह के आधार पर

- एलिफैटिक्स
- एमिड्स और एसिटामिड्स: जैसे एलेक्लोर और बुचैलर
- आर्सेनिकल्स
- बैंजोइक्स और फिनाइल एसिटेट्स
- बाइपिरिडिलिमिस
- कार्बामेट्स और कार्बानिलेट्स
- डाइनाइट्रोएनिलाइन्स: जैसे ओर्जैलिन, पेन्डिमिथेलिन, ट्रिफ्लुरिन
- डाइफिनाइल ईथर: जैसे नाइट्रोफेन, ऑक्सीफ्लोरफेन
- नाइट्राइल्स
- फ़ीनोल्स
- फ़ीनोक्सीएसिड्स: जैसे 2,4-डी
- पिरिडैज़िनोम्स
- थायोकार्बामेट: जैसे बंधियोकार्ब

FIS Packages of Practices

- Agro Climatic Zones
- Farming Systems
- Hybrid Rice Cultivation
- Bio fertilizers
- Cropping Systems
- ITKs
- SRI Cultivation
- Storage
- Popular Varieties
- Weeds

यु.प्र. के
कोरकु आसक्ति प्रकृतिकरण
(EXPRESSION OF INTEREST)

- Listen to Dr. Shaik N. Meera
about RKMP (in Telugu) Radio



Best Viewed in Mozilla Firefox, C

Home >> Farmers Domain >> Uttar Pradesh >> Packages



Select the State

Announcements

- 4th International Rice Congress in Bangkok, 27-31 October 2014
- Watch RKMP Live Programme broadcasted in Gemini News

FIS Packages of Practices

- Agro Climatic Zones
- Farming Systems
- Hybrid Rice Cultivation
- Bio fertilizers
- Cropping Systems
- ITKs
- SRI Cultivation
- Storage
- Popular Varieties
- Weeds

Upload new Content

Search Farmer

Search

24 Aug

रासायनिक समूह के आधार पर

Contributed by rkmp.drr on 24 Aug, 2011

रासायनिक समूह के आधार पर

- एलिफैटिक्स
- एमिड्स और एसिटामिड्स: जैसे ऐलेक्लोर और बुचैलर
- आर्सेनिकल्स
- बेंजोइक्स और फिनाइल एसिटेट्स
- बाइपिरिडिलिमस
- कार्बामेट्स और कार्बानिलेट्स
- डाइनाइट्रोएनिलाइन्स: जैसे ओर्जैलिन, पेन्डिमिथेलिन, ट्रिफ्लुरएरिन
- डाइफिनाइल ईथर: जैसे नाइट्रोफेन, ऑक्सीफ्लोरफेन
- नाइट्राइल्स
- फ़िनोल्स
- फ़िनोक्सीएसिड्स: जैसे 2,4-डी
- पिरिडैज़िनोम्स
- थायोकार्बामेट: जैसे बंधियोकार्ब

- Uttar Pradesh
- Andhra Pradesh
- Assam
- Bihar
- Chhattisgarh
- Haryana
- Jharkhand
- Karnataka
- Maharashtra
- Manipur
- National
- Orissa
- Punjab
- Tamilnadu
- Uttar Pradesh
- West Bengal
- Meghalaya
- Uttarakhand
- Tripura
- Kerala

Upload content with single click



Welcomes you to **Andhra Pradesh**



Acharya N G Ranga Agricultural University

Home Research Domain Extension Domain Farmers Domain Service Domain General Domain Rice Stats E-Learning About RKMP Contact Us

ed in Mozilla Firefox, Google Chrom

Home >>Farmers Domain >>Andhra Pradesh >>Pa

Andhra Pradesh is selected
Telugu content is seen



Announcements

- 4th International Rice Congress in Bangkok, 27-31 October 2014
- Watch RKMP Live Programme broadcasted in Gemini News channel on 25 Aug 2013 - తెలుగు

FIS Packages of Practices

- Agro Climatic Zones
- Farming Systems
- Hybrid Rice Cultivation
- Bio fertilizers
- Cropping Systems
- ITKs
- SRI Cultivation
- Storage
- Popular Varieties
- Weeds

Upload new Content

Search Farmer

Search

Andhra Pradesh ▾

Cloud Tag

Rice Vocs
Weed Management
Production Know
EIS
Rice Soils
Research
more tags

Upload Opportunity

Upload content
with single click

13 Sep నాట్లు వేయటం

Contributed by issacfinny2000 on 13 Sep, 2013

Terms : FIS ,Package of Practices ,Recommended POP

Read more

13 Sep వరి విత్తనాల్లో నిద్రావస్థను తొలగించుట

Contributed by issacfinny2000 on 13 Sep, 2013

కోత కోసిన వెంటనే విత్తనాలను వాడుకోవాలంటే వరి గింజల్లోని నిద్రావస్థను తొలగించి అధిక మొలకకాతం రాబట్టటానికి, లీటరు నీటికి తక్కువ నిద్రావస్థ ఉన్న విత్తనాలకైతే 6.3 మి.లీ లేదా విజేత లాంటి ఎక్కువ నిద్రావస్థ ఉన్న విత్తనాలకైతే 10 మి.లీ గాఢ సత్రికాఘం కలిపి ఆ ద్రావణంలో 24 గంటలు నానబెట్టి మరో 24 గంటల పాటు మండేకట్టాలి

Terms : FIS ,Package of Practices ,Recommended POP

Read more





English ▼

Search Rkmp

Search

Rice Knowledge Management Portal

[Home](#) [Research Domain](#) [Extension Domain](#) [Farmers Domain](#) [Service Domain](#) [General Domain](#) [Rice Stats](#) [E-Learning](#)

Service domain is a platform to keep the rice stakeholders informed of trade and weather for better decisions in rice enterprises

- Trade Know How
- Weather information

- Spot Nearest Research/ Extension office
- Mandi prices

Rice Stats

to provide the timely and accurate rice statistics for the rice policymakers!

- Rice Almanac
- GIS Maps



Trade Information System (www.tis.rkmp.co.in)



Home | Trade Home | Contact Us | Feedback | Registration



Why Trade Information System?

Rice is one of the largest agriculture export items from India. A decade ago, India used to export only Basmati rice. Non-Basmati rice has also become a major item for export, registering a steady upwards trend in recent years, but, in monetary terms, the basmati varieties bring in more foreign exchange than non-basmati varieties of rice. A tremendous demand for basmati rice in the international markets has seen the country's basmati rice exports increased from about USD 470 million in 2000-2001 to about USD 1900 million during 2008-09.

[Read more](#)



About Rice Knowledge Management Portal

In the changing scenarios and shifting paradigms, Indian Council of Agricultural Research (ICAR) wishes to be the global leader in promoting the use of Information and Communication Technologies (ICTs) in agriculture by developing national level knowledge management portal. As a first step towards achieving this objective, an exclusive portal on rice viz., Rice Knowledge Management Portal (RKMP) is being developed by ICAR under the prestigious NAIP project. The portal is being built by the Directorate of Rice Research in association with 8 consortia, two convergent and 20 AICRIP partners. This will serve as a backbone for rice sector in sharing rice knowledge through latest ICT tools including mobile telephony. It will also help Ministry's ongoing activities in reaching out to the farmers with most effective extension advisory services.

[Read more](#)



Export Promotion



Major Exporters



Major Importers



Market Diversification



Links on Rice

Related Links



ICAR

NAIP

DRR

E-learning in Java

E-learning in Moodle

E-learning in Joomla

Communities of Practice

Expert Answers on Rice

India Rice Research Repository

FLDs

Rikipedia

Way

RKMP

Food Safety Regulation

Farmer's Dilemma & Exporter's Dilemma



Client Login

Login

New User [Register Here !](#)



Food Safety Regulation



Rice Knowledge Management Portal

[Home](#) | [Trade Home](#) | [Contact Us](#) | [Feedback](#) | [Registration](#)

Food Safety Regulation

Country	Food Laws	Labeling Requirements	Packaging and Container Regulations	Food additive Regulations	Pesticides and other Contaminants	Other Regulations and Requirements	Other Specific Standards	Copyright and/or Trademark Laws	Import Procedures	Government Regulatory Agency Contacts	Other Import Specialist Contacts
Argentina											
Brazil											
Costa Rica											
Ecuador											
Finland											
France											
Germany											
Ghana											
Hong Kong											
Hungary											
Japan											
Kenya											
Kuwait											



Mandi (Market) Prices

Announcements

- 4th International Rice Congress in Bangkok, 27-31 October 2014
- Watch RKMP Live Programme

User login

Username: *

Password: *

Log in

- Create new account
- Request new password

Visitors Profile

- Registered Users: 2411
- Last Registered User: sherjungvirk
- Your IP: 66.249.74.194

Mandi (Market) Prices


 Print  Send to friend

 Share

Here you will find Market prices of Rice that are prevailing in the regulated market yards across the country. We hope that this information will be useful for better decision making.

This is only indexing service from Agmarknet.nic.in . We gratefully acknowledge the original source.

"The arrival and prices of different agricultural commodities as received from the Agricultural Produce Market Committee (APMCs) of different States are uploaded at AGMARKNET portal for information only and shall not be considered as guidance, invitation or persuasion. Users/visitors have to make their own decisions based on their own independent enquiries, appraisals, judgments, wisdom and risks. The Govt. of India shall not be liable or responsible for any loss or cost or any action whatsoever arising out of use or relying on the arrivals and prices and other related information disseminated at the portal."

SEND US YOUR
Feedback 
Feedback

Close

Market-wise Daily Report On 05/12/2013

Commodity: Rice

Variety wise

NR: Not Reported

Market	Arrivals (Tonnes)	Origin	Variety	Minimum Price (Rs./Quintal)	Maximum Price (Rs./Quintal)	Modal Price (Rs./Quintal)
Gujarat						
Jhagadiya	1		Other	1640	2856	2370
Jharkhand						
Godda	NR		Medium	3000	3200	3100



English ▼

Search Rkmp

Search

Rice Knowledge Management Portal

[Home](#) [Research Domain](#) [Extension Domain](#) [Farmers Domain](#) [Service Domain](#) [General Domain](#) [Rice Stats](#) [E-Learning](#)

General domain for the house-makers, children, students & the general public to know about rich history, culture, facts, recipes, value products, news & events of rice!

- **History and Evolution of Rice**
- **Rice in Human Nutrition -61 recipes**
- **Virtual Rice Resources**
- **Rice in Indian Culture**
- **Rice End Products -12**
- **Seed Availability**

- **Rice Facts**
- **News and Events**
- **Virtual Tours -20**
- **User Surveys**
- **Feed Aggregator**





English ▼

Search Rkmp

Search

Rice Knowledge Management Portal

[Home](#) [Research Domain](#) [Extension Domain](#) [Farmers Domain](#) [Service Domain](#) [General Domain](#) [Rice Stat:](#) **E-Learning**

Multi-dimensional e-learning platforms for providing online learning opportunities!

- **Learn Rice and Learn Rice -Moodle**
- **A total of 18 e- courses are available**

Some E-Learning courses..

- **SRI**
- **Hybrid Rice Production**



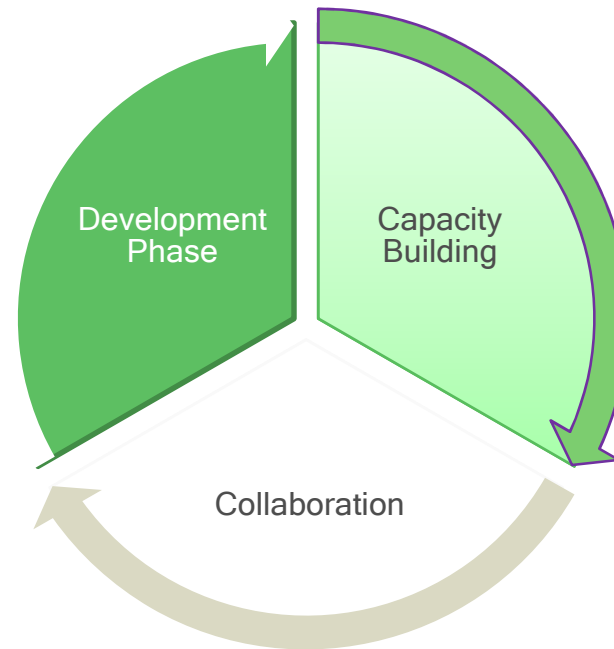
Innovations in technologies and processes

- Semantic portal with 2500 terms tagged
- Harnessing existing AICRIP set up with ICTs
- Multiple delivery mechanisms
- Rice check program: Vast knowledge available in the portal is brought under 9 specific checks
- Offline CDs / Mobile apps for real-time tools like Diagnostic tool & Fertimeter





Partnerships



Development Phase:

The views of the rice stakeholders in the private sector were taken into account for developing the portal and serving them better

Capacity Building: The major issues identified for integrating the Private/NGO- Public sector with RKMP are as follows

1. Private Sector information on public portal : Challenges
2. Incorporating service component into RKMP
3. Platforms/Interface development for Private sector
4. Advertisements: prospects and issues
5. Mobile Applications of RKMP – Perspectives of Private sector.

Collaboration : Companies like **Mahindra Samriddhi** and **Savannah seeds** have shown interest in collaborating with RKMP, companies have come forward to showcase their products on the portal



Opinion of client about intervention

“When the Principal Investigator has this kind of clarity, the projects ought to be successful. Congratulations” – **Prof. SL Mehta, Chairman, RPC NAIP**



Director General (IRRI)
visited RKMP at DRR and appreciated the efforts



“Amazing work” – **Martin Parr, KM Programme Manager, CABI, UK**

“I visited your RKMP and it is definitely a good resource of information on rice. Congrats for the exhaustive work your team has done”
- **Sarah M. Fernandes, Information and Knowledge Management, Africa Rice Center (AfricaRice), BENIN**



RKMP is for me not only a product, but a model, a framework too. You can discontinue developing the product but you can continue to refine the framework - that is how your leadership will come to be recognized”

- **Dr. Venkataraman Balaji**
Director, Technology & Knowledge Management Commonwealth of Learning, Vancouver, BC, CANADA



Facts about RKMP

No. of hits on the sub-project: 737,460

Digitization of Datasets: 27000

Training of critical mass (no. of experts trained) - 2675

Number of novel methodologies developed for research - 15

No. of e-courses developed: 19

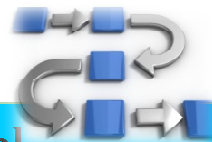


Development of linkages
International - 3
National - 5



Enhanced Knowledge Sharing and public Awareness activities carried out - 56

Number of mass communication campaigns launched by media type - 25



Success stories

FAO –APAARI Success Story

The success story has highlighted about the

➤ How can users contribute to RKMP?

➤ Interactivity and ease of users

➤ Best usage scenarios

➤ User experience and how RKMP has influenced their life

The collage features the logos of GFAR (Global Food and Agricultural Research) and APAARI (Asia-Pacific Agricultural Information and Knowledge for All) at the top. Below the logos, the text reads "Agricultural Information and Knowledge for All: Success Stories on ICT/CM in AR4D in Asia and the Pacific Region". The main part of the collage displays four screenshots of web portals: "Indian Agricultural Research Journals", "Rice Knowledge Management Portal", "PCARRD (Philippine Council for Agriculture, Forestry and Fishery Extension, Training and Education)", and "IRIS (Human Resources Information System)".



Thank you

