

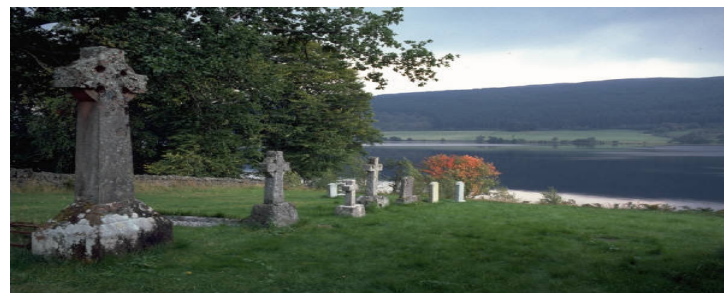
Have We Done All We Can Do?



# Facts !

- **2012**
  - Women Killed: 114
  - Family violence incidents: 188,992
  - Adults sheltered: 11,994
  - Children sheltered: 14,534
  - Adults receiving nonresidential services (i.e., counseling, legal advocacy, etc.): 36,831
  - Children receiving nonresidential services: 15,694
  - Adults denied shelter (due to lack of space): 26.2%
  - Hotline calls answered: 191,301

- (Texas Council on Family Violence)

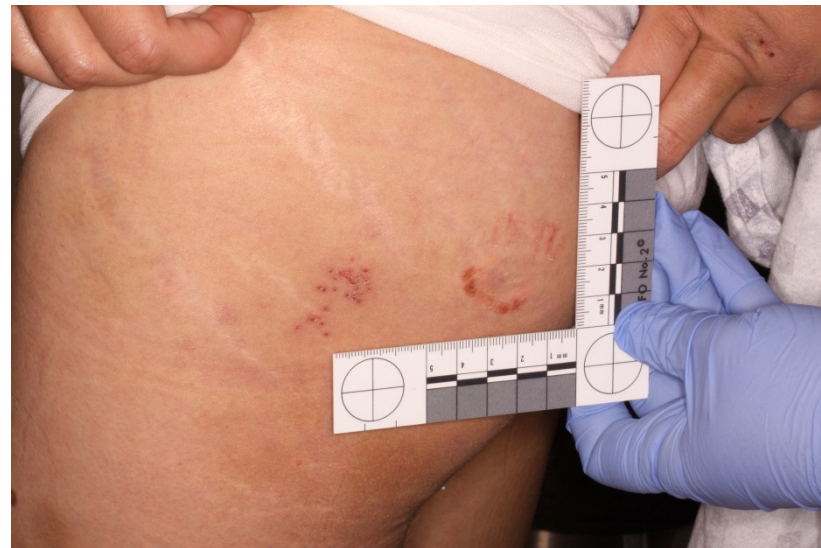


# Affects on Community

- Drains our resources:
  - Private business
  - Agencies
  - Government
  - Community Groups
  - Individual Resources

# Affects Individuals

- Pain
- Hospitalization
- Family and children
- Job
- Pets
- Home
- Fear



# Our Responsibility

- Recognition
- Communication
- Validation
- Education
- Documentation
- Evidence Collection
- Safety
- Collaboration and Referrals
- Be A Voice



# What More Can We Do?

- Financial Support
- Training Programs
- Enforcement of Existing Laws
- Private Business
- Government
- Community



# Impossible?

- Will it End?
- Diligence





**It's hard to confront  
a friend who abuses his wife.  
But not nearly as hard as  
being his wife.**