



Nottinghamshire Healthcare



NHS Trust

*Positive about integrated healthcare*

# **A review of the factors that influence high, medium and low secure forensic care pathways**

Dr Julie Hall, Executive Director of Forensic Services  
2nd International Conference on Nursing & Healthcare; Chicago, 2014



# Forensic Services

- Forensic Services provide assessment and treatment to individuals with a mental disorder who have committed or are at serious risk of committing a criminal offence, and are likely to cause serious physical and/or psychological harm to themselves or others.
- Individuals are managed in secure environments of high, medium and low levels of security depending on the seriousness of their index offence, levels of behavioural disturbance and potential for absconsion or escape.



# Care Pathway













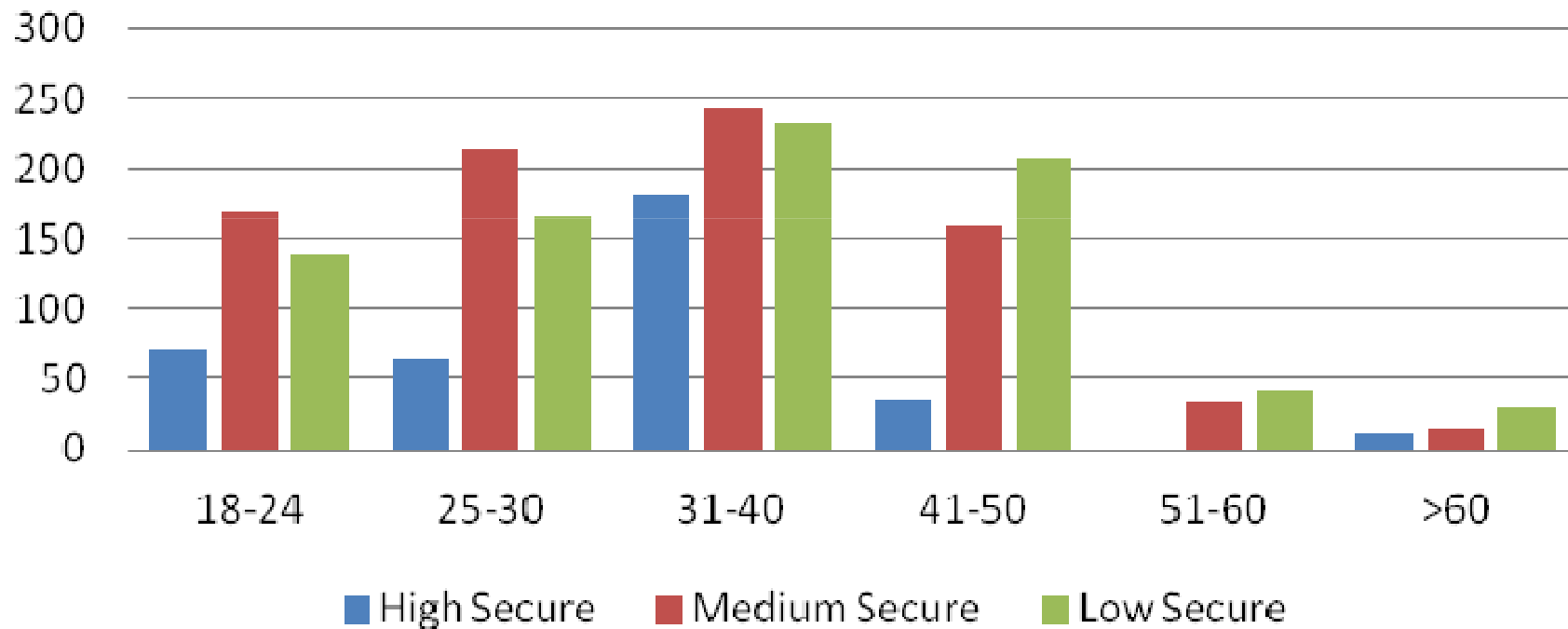




# Example Profiles

*Positive about integrated healthcare*

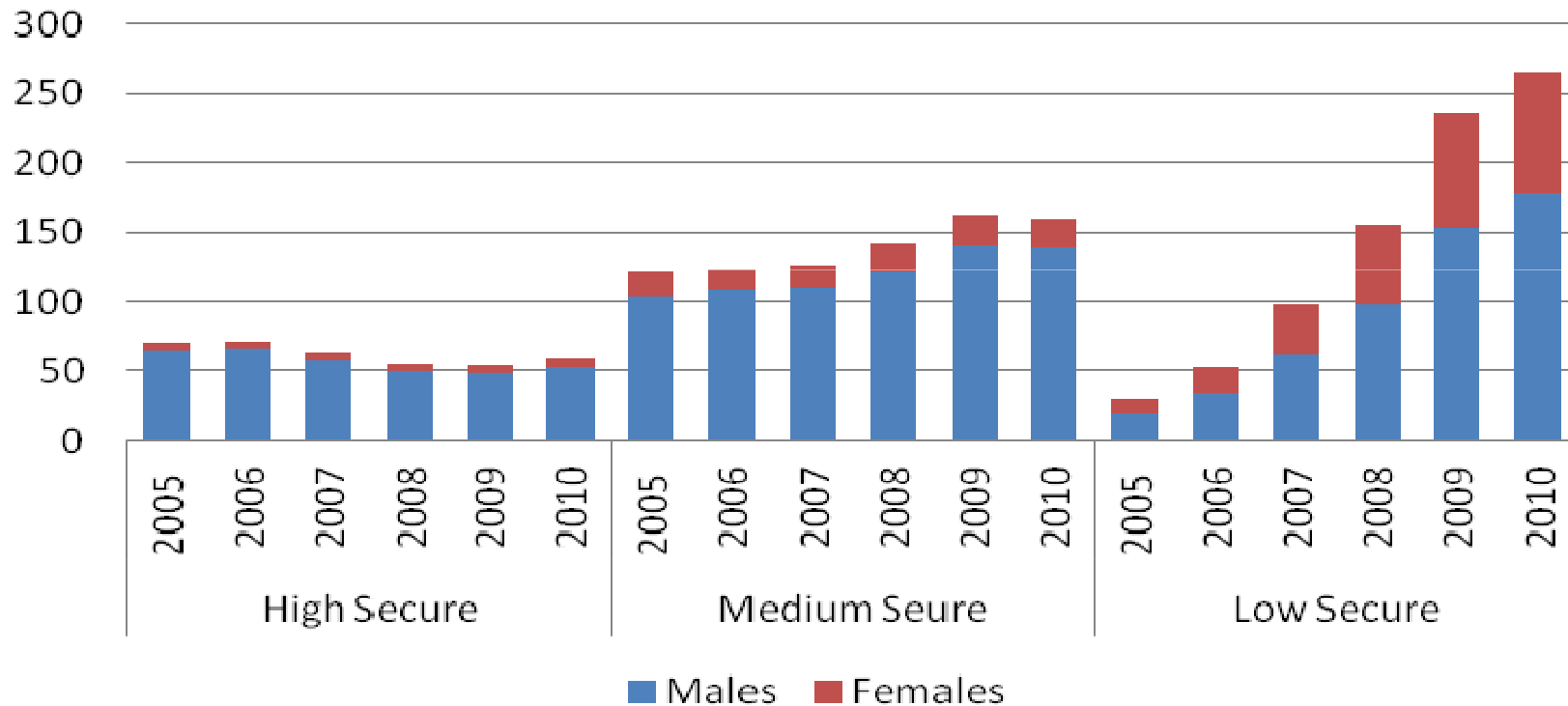
Figure 24 - Age Profile of Patients by Level of Security (2005-2010)





# Growth in population

Figure 28 - Population Growth & Gender Split (2005-2010\*)



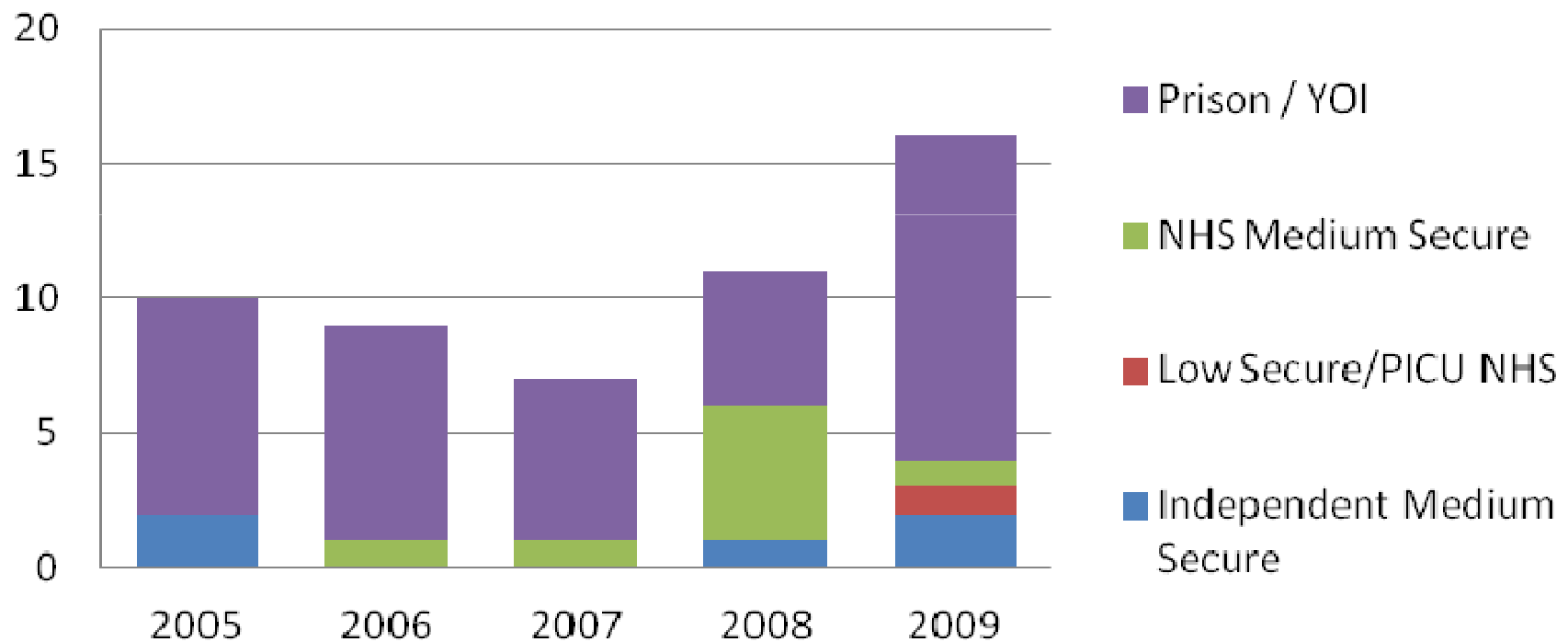




# Pathways In

*Positive about integrated healthcare*

**Figure 29 - Sources of Admission to High Secure Services over time**





**Figure 30 - Sources of Admission to Medium Secure over time**

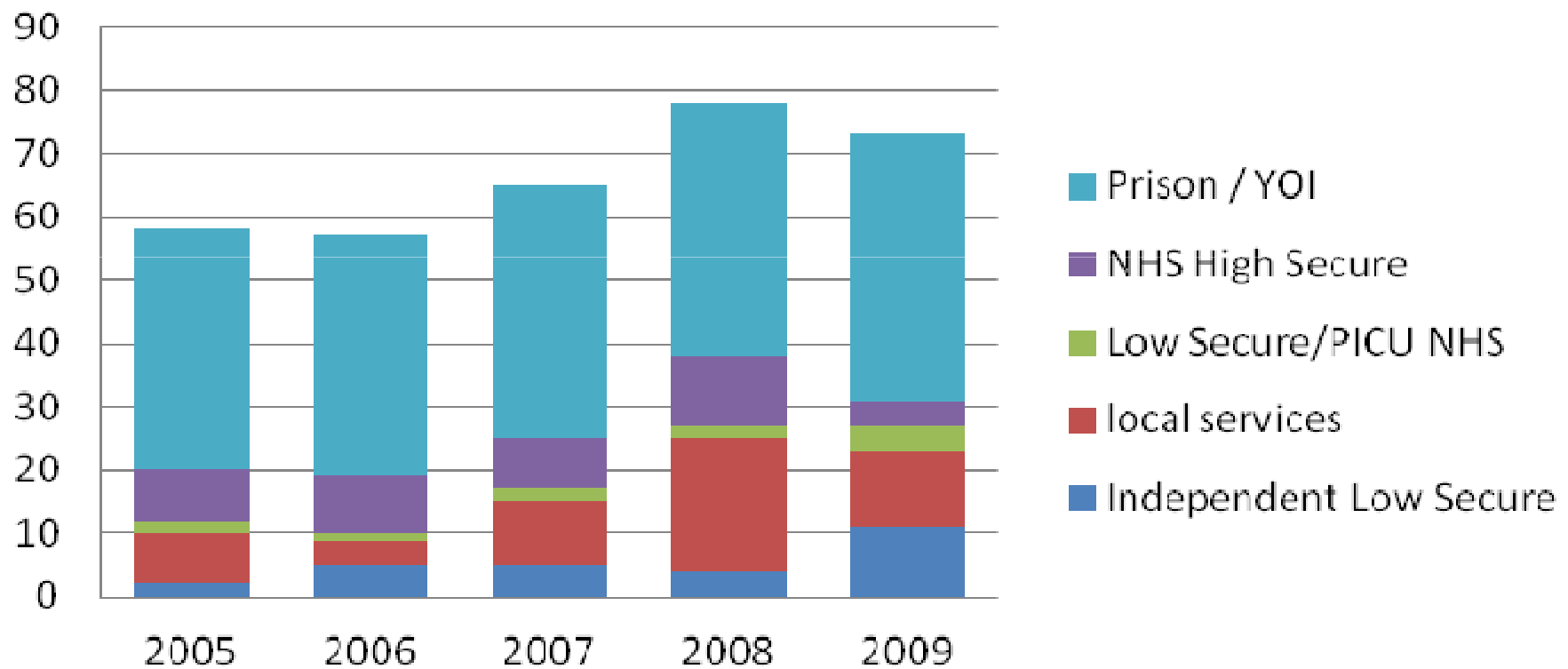
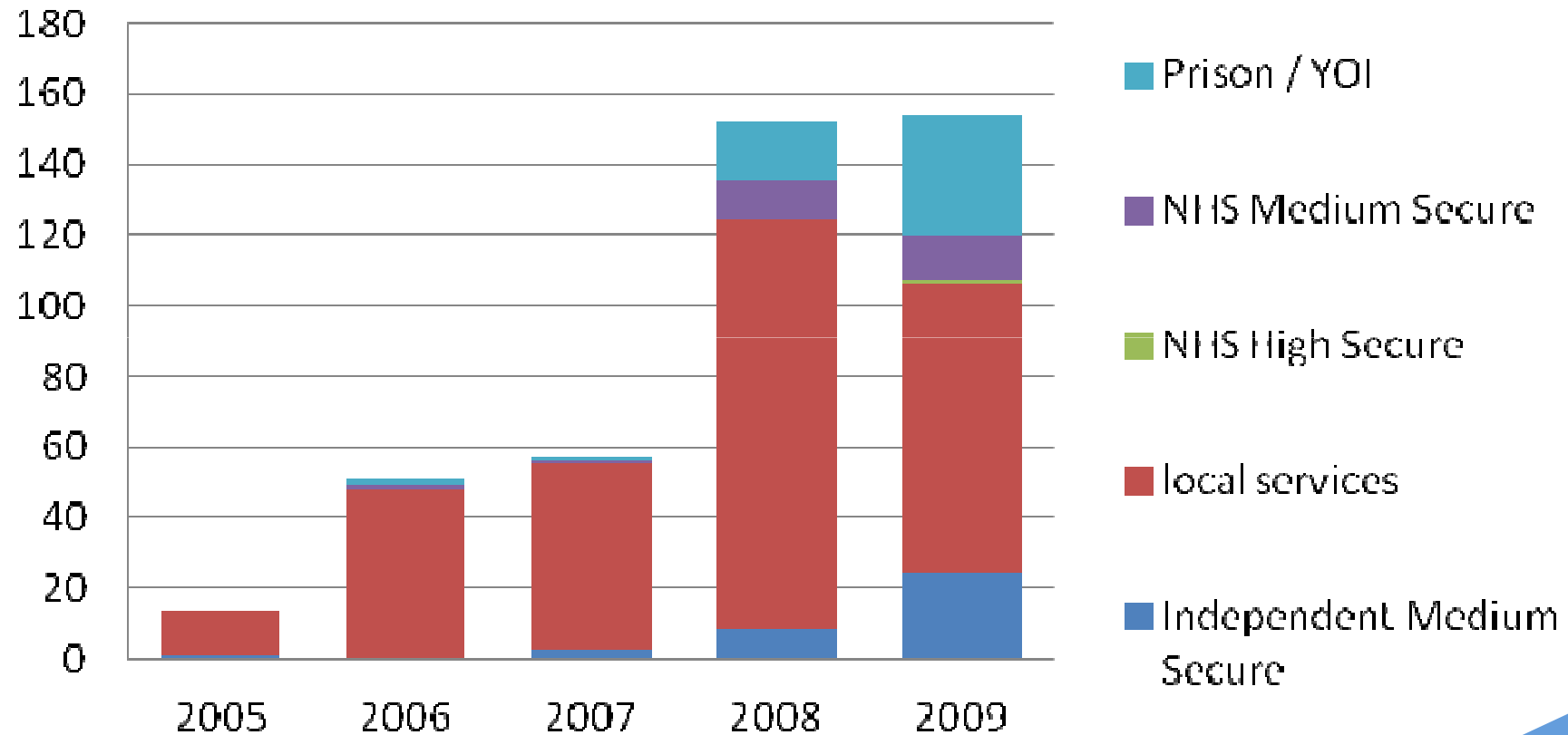






Figure 31 - Sources of Admission to Low Secure over time *Positive about integrated healthcare*





## Variation in Pathways

- **Variation in provision**
- **Issues of effectiveness**
- **Length of stay**
- **Variation in expenditure**





## **Influential Factors**

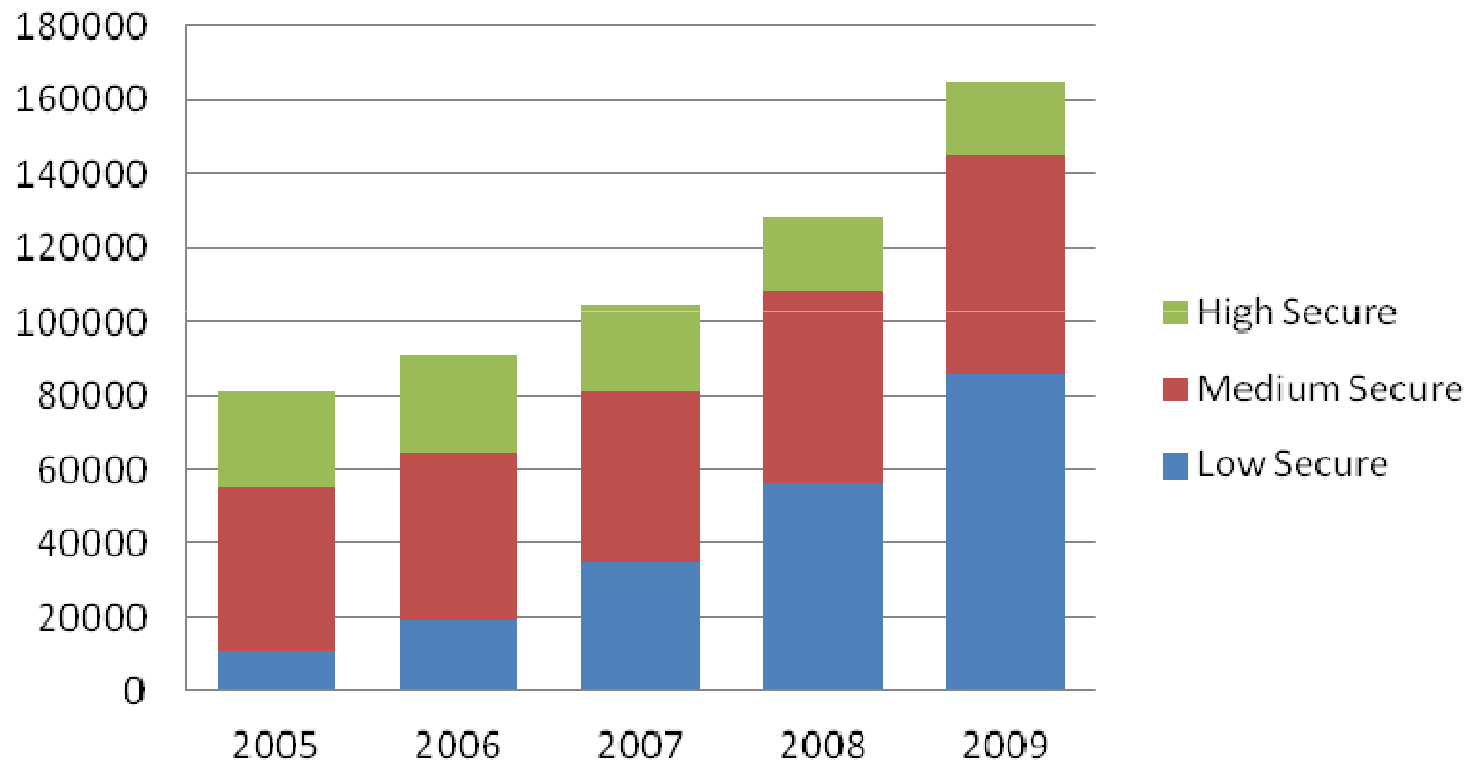
- **Imprisonment for public protection**
- **Prison Health**
- **Particular groups**
- **Finance, capacity and patient flows**
- **Patients and professional affecting patient flows**
- **Organisational Factors**



# Use Profile

*Positive about integrated healthcare*

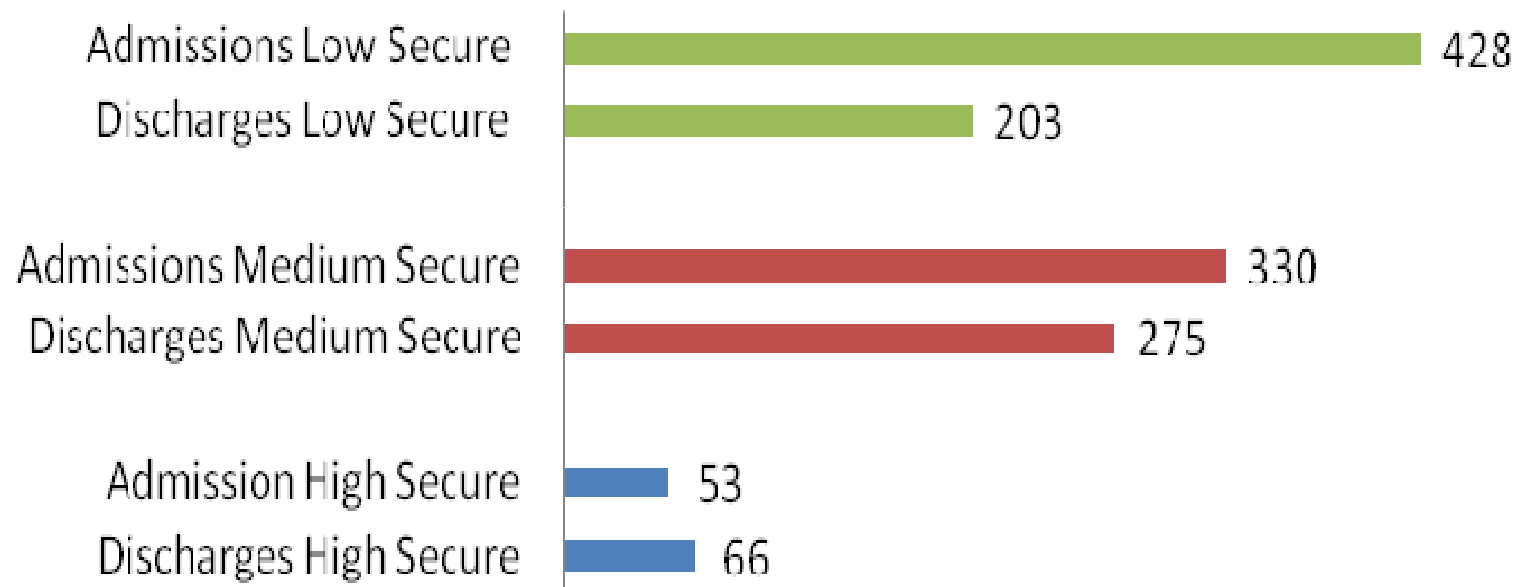
Figure 5 - Profile of Secure Occupied Bed Days (2005-2009)







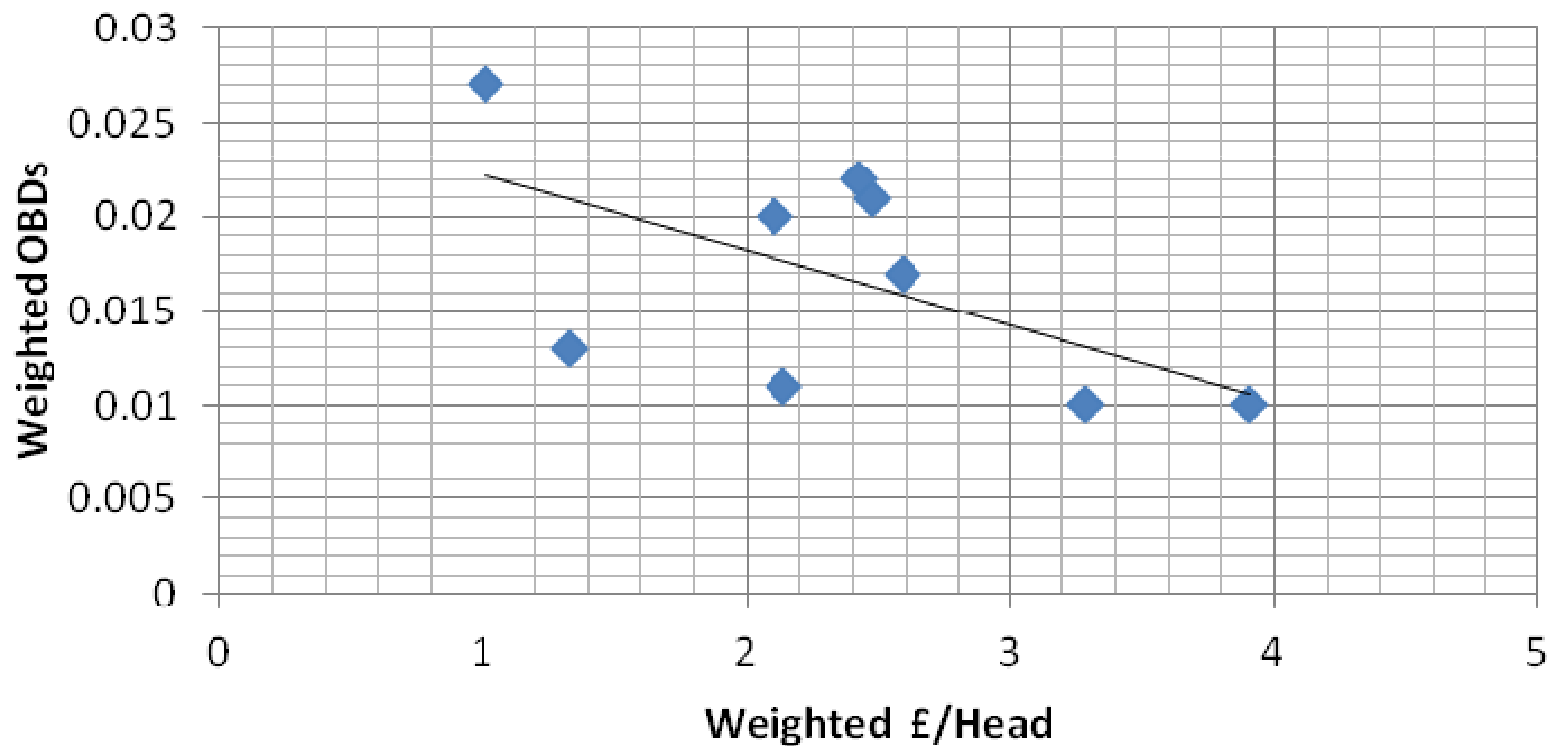
**Figure 8 - Secure Services Admissions & Discharges Summary  
(2005 - 2009)**





# Local Service Factors

Figure 11- Low Secure OBDs/Assertive Outreach Investment per PCT







**Figure 12 - Assertive Outreach Spend/Secure  
& High Dependency Spend**

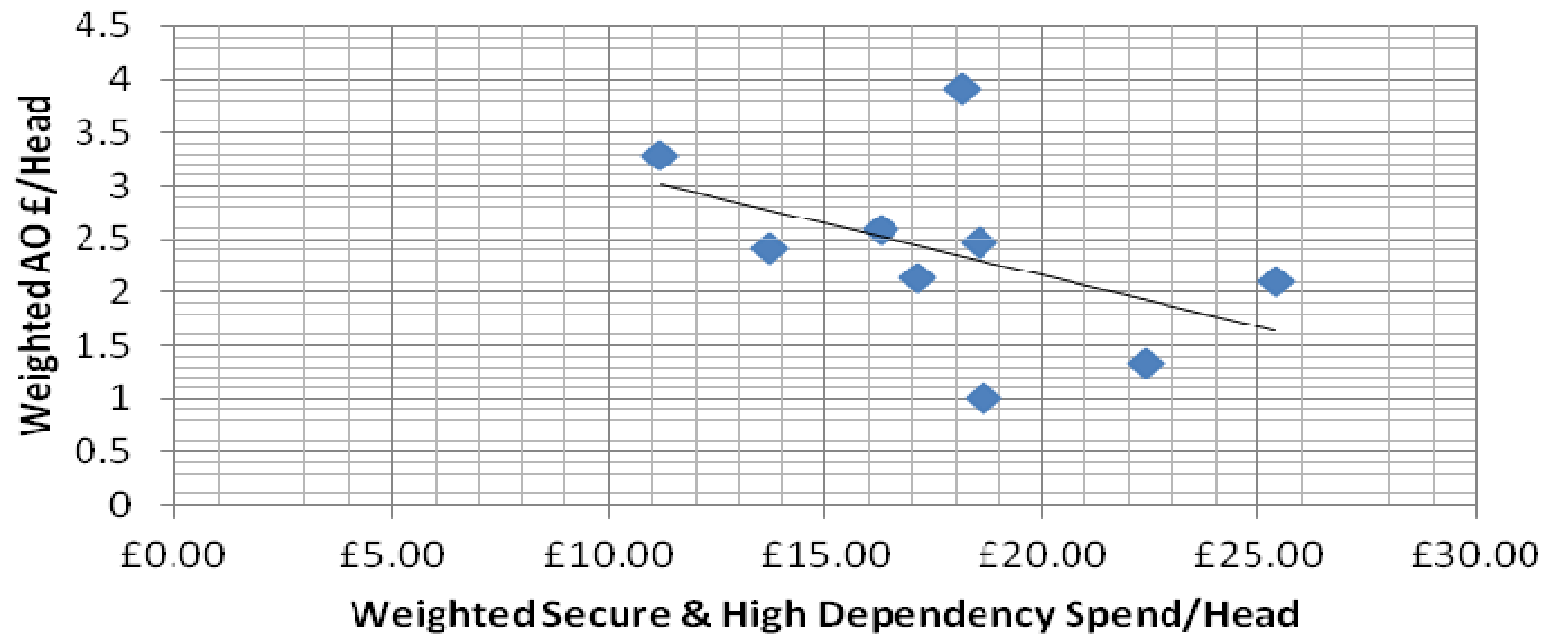
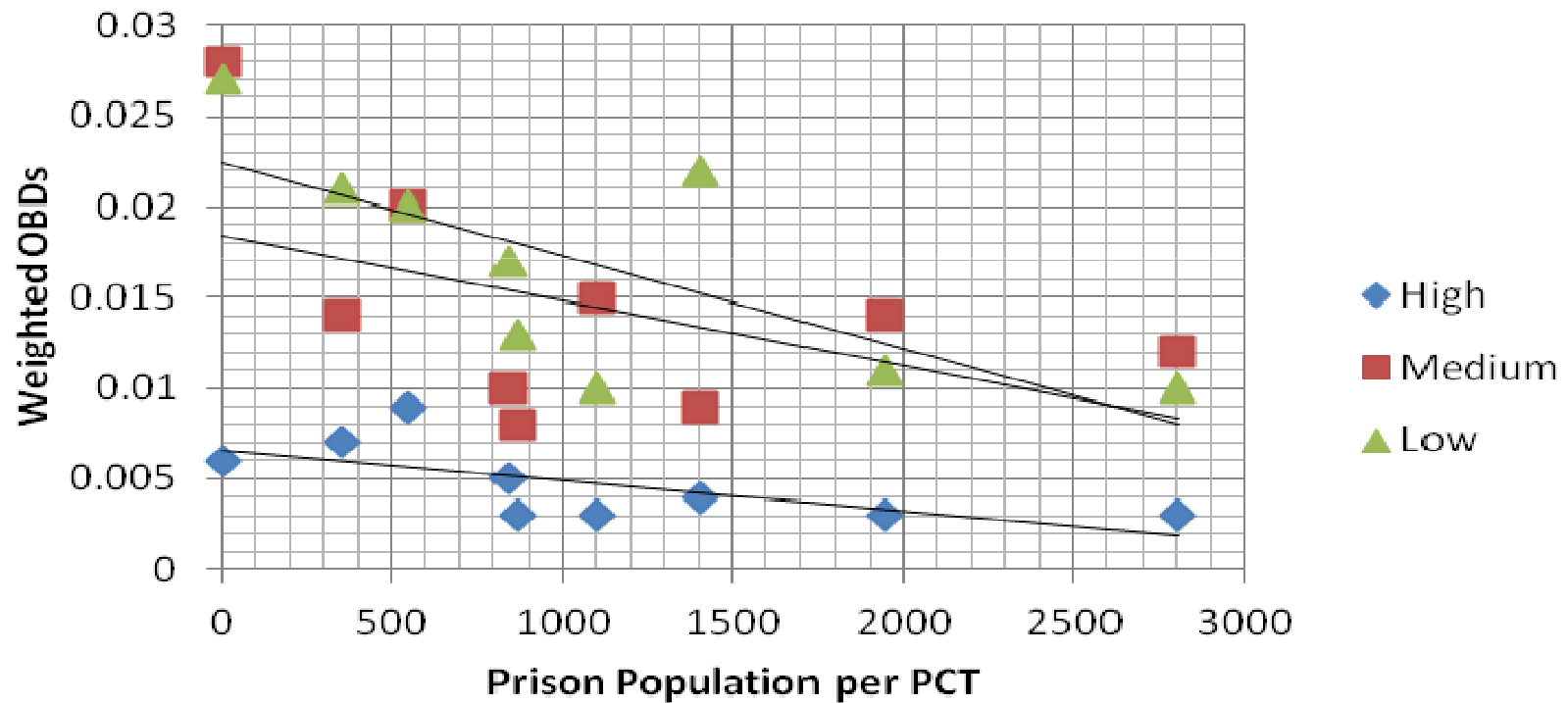




Figure 17 - Secure OBDs/PCT Prison Population





## Reducing Variation

- **100+ KPIs High Secure**
- **Eq. prison KPIs**
- **Waiting times etc**
- **30-50 KPIs Medium & Low Secure**
- **Medium, Low & High Secure Specifications**
- **Case Management**
- **Transitions**





***Closing Remarks & Questions***