

8th World Summit on

Women's Health and Cancer Awareness

April 27-28, 2026 | Vancouver, Canada



S C I E N T I F I C P R O G R A M

08:30-09:00 Registrations

09:00-09:30 Introduction

09:30-09:50 COFFEE BREAK

09:50-11:50 Meeting Hall 01 **KEYNOTE LECTURES**

	MEETING HALL 01	MEETING HALL 02
11:50-13:10	Talks On: Breast Cancer	Talks On: Cancer Therapy
	Cancer Metabolism	Surgery and Radiation Therapy
	Cancer Cell Signaling	Drug Treatments
	Cancer Genetics	Immunotherapy
	Tumor Microenvironment (TME)	Artificial Intelligence in Cancer Research and Treatment

13:10-13:15 GROUP PHOTO

13:15-14:00 LUNCH BREAK

	MEETING HALL 01	MEETING HALL 02
14:00-16:00	Talks On: Womens Mental Health	Talks On: Menopause and Hormone Therapy
	Anxiety	Insomnia
	Depression	Premenstrual Syndrome
	Obsessive–Compulsive Disorder	Neoplasm
	Social anxiety disorder	Tamoxifen

16:00-16:20 COFFEE BREAK

MEETING HALL 01 (16:20-17:00)

Young Researchers In Womens Health

09:00-10:30
 Meeting Hall 01 **KEYNOTE LECTURES**

10:30-10:50 **COFFEE BREAK**

	MEETING HALL 01	MEETING HALL 02
10:50-12:50	Talks On: Sexual and Reproductive Health	Talks on: Maternal Health
	Herpes simplex virus	Antenatal and Postnatal Care
	Endometriosis	Innovations in Maternal Health
	Sexually Transmitted Infections	Perinatal Period
	Family Planning/Contraception	Social Determinants of Maternal Health

12:50-13:35 **LUNCH BREAK**

	MEETING HALL 01	MEETING HALL 02
13:35-15:55	Talks On: Fueling Well-being	Talks On: Building Resilience
	Development and Activity	Education and Awareness
	Emotional well-being	Healthy Lifestyle
	Psychological well-being	Healthy Lifestyle
	Life satisfaction	Support Network

15:55-16:15 **COFFEE BREAK**

MEETING HALL 01 (16:15-17:00)	MEETING HALL 01 (17:00-18:00)
Poster Presentations	Workshop

Awards & Closing Ceremony

PAST AFFILIATES

Qabale Duba, Kenya Field

*Epidemiology and Laboratory Training
Program, Kenya*

Kasiye Shiferaw Gemechu

Haramaya University, Ethiopia

Olivia B Baloyi

University of KwaZulu-Natal, South Africa

Mo Zhou

University of Newcastle, Australia

Amany El-Sayed Ahmed Awad

Menoufia University School of Medicine, Egypt

Shiela Mae D

East Avenue Medical Center, Philippines

Shyam Lamsal, B.P.Koirala

Institute of Health Sciences, Nepal

Seth Midenyo Obura

University of Merryland, Kenya

S Yamini Sudha Lakshmi

University of Madras, India

Duangkamol Viroonudomphol,

Siam University, Thailand

Qamar Rahman

Amity University, India

John Palacio-Cardona

Universidad Santiago De Cali, Colombia

Thummar Kashyap

Gujarat Technological University, India

Mohamed Zaky Zayed

Alexandria University, Egypt

Navin Sheth

Gujarat Technological University, India

Samikshya Neupane,

Kathmandu Medical College, Nepal

Ala khasawneh,

University of Pécs, Hungary

Syed Muhammad Anwar,

*University of Engineering and Technology,
Pakistan*

Kunwarpal singh,

*Sri Guru Ram Das Institute of Medical Sciences
and Research, India*

Shajeem Shahudeen,

Vivid Diagnostic Centre, India

Dongyeon Lee,

Yonsei University, South Korea

M. A. Alnafea,

King Saud University, Saudi Arabia

David Sipos,

*University of Pécs Faculty of Health Sciences,
Hungary*

PAST AFFILIATES

Ala khasawneh

[University of Pécs, Hungary](#)

Mustafa Sabil,

[United Kingdom](#)

Zang-Hee Cho,

[Seoul National University, South Korea](#)

Bin Zheng,

[University of Oklahoma, USA](#)

Michael L Goris,

[Stanford University School of Medicine, USA](#)

Bital Savir-Baruch,

[Loyola University Medical Center, USA](#)

Ilona Kowalik-Urbaniak,

[Client Outlook Inc., Canada](#)

Monika Beresova,

[University of Debrecen, Hungary](#)

Hang Joon Jo,

[Mayo Clinic, USA](#)

Elaine Iuanow,

[Cleveland Clinic Foundation, USA](#)

Barath Narayanan Narayanan,

[University of Dayton, USA](#)

Jamal Zweit,

[Virginia Commonwealth University, USA](#)

David A Gutman,

[Emory University School of Medicine, USA](#)

Limin Yang,

[University of Iowa, USA](#)

Tamara Feygin,

[University of Pennsylvania, USA](#)

Hesham El Sheikh,

[Benha University, Egypt](#)

Manohar Roda,

[University of Mississippi, USA](#)

Daniel Pastore,

[Sao Paulo University School of Medicine, Brazil](#)

Mafalda Gomes,

[University of Porto, Portugal](#)

Nilda Espinola-Zavaleta,

[National Institute of Cardiology Ignacio Chavez, Mexico](#)

Svjetlana Jefic,

[University Clinical Centre of Republic of Srpska, Bosnia and Herzegovina](#)

Aminur Rahman,

[National Institute of Neurosciences and Hospital, Bangladesh](#)

Shivaram Poigai Arunachalam,

[Mayo Clinic, USA](#)

Ken Miles

[University College London, UK](#)

Tanya Moseley

[University of Texas MD Anderson Cancer](#)

PAST AFFILIATES

Vancouver Attractions



Stanley Park



Art Gallery



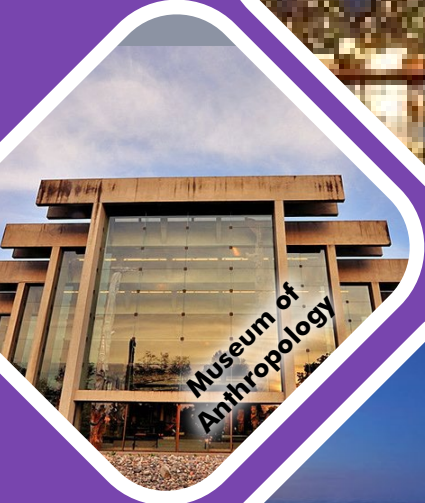
Queen Elizabeth Park



Science World At-Telus



Brockton Point Totem Poles



Museum of Anthropology



Grouse Mountain



Capilano Suspension Bridge



Canada Vancouver Chinatown

Glimpses of Women's Health and Cancer Conferences

