

conference**series**.com

3

Days Of Scientific  
Exchange

30+

Scientific Sessions

80+

International Expert  
Faculty Members

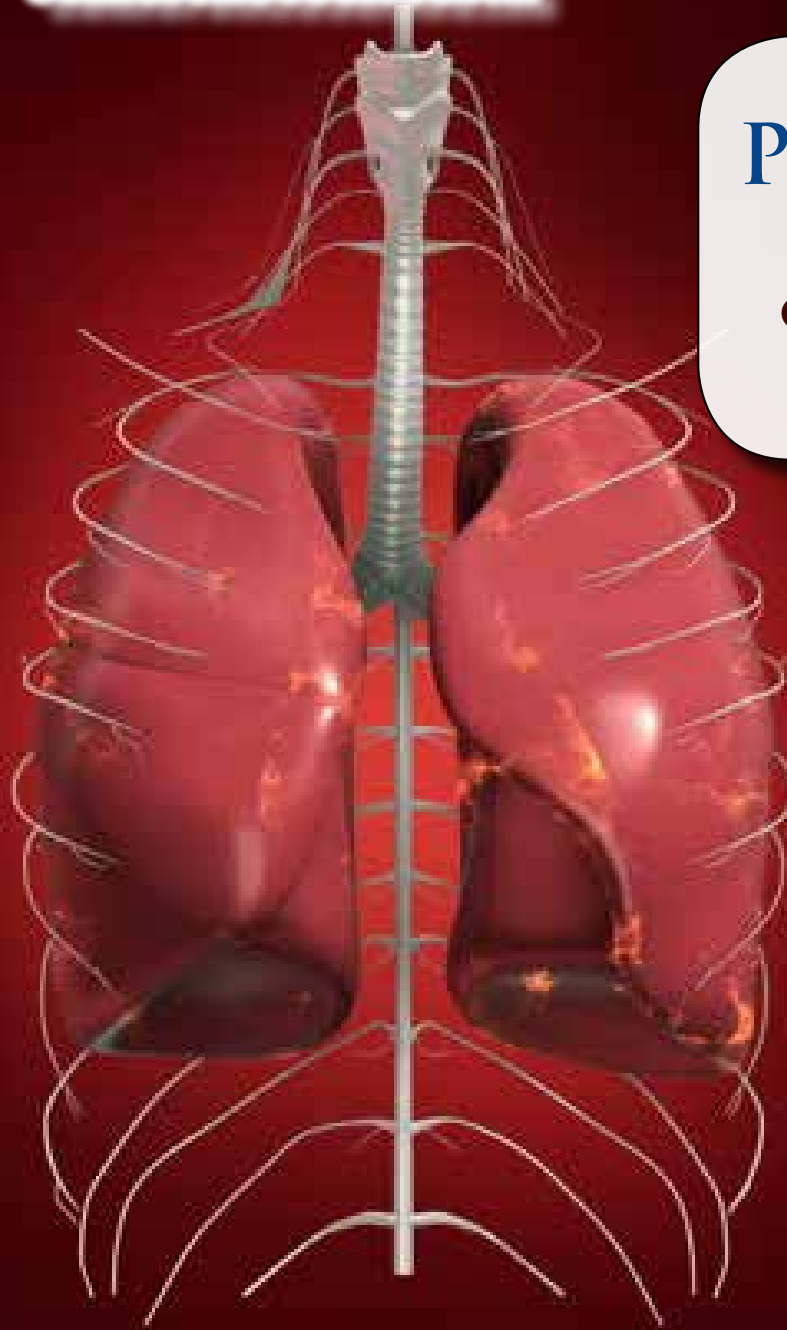
150+

Healthcare  
Professionals

20+

Exhibitors

**B2B Meetings**



7<sup>th</sup> Annual Congress on  
**PULMONARY AND  
CRITICAL CARE**

October 28-29, 2019 Tokyo, Japan

*Theme:*

*Time to breathe right-Rethink, Respire*

<https://pulmonary-criticalcare.global-summit.com/>

# Invitation

3

Days Of Scientific  
Exchange

30+

Scientific Sessions

80+

International Expert  
Faculty Members

150+

Healthcare  
Professionals

20+

Exhibitors

**B2B Meetings**

Dear Colleagues,

Conference Series llc LTD., is delighted to welcome you to Tokyo, Japan for the Prestigious 7<sup>th</sup> **Annual Congress on Pulmonary and Critical Care**. Pulmonary Meet 2019 will focus on “**Time to breathe right- Rethink, Respire**”. We are confident that you will enjoy the Scientific Program of this upcoming Conference.

We look forward to see you at Tokyo, Japan.

With Regards,

**Pulmonary Meet 2019**

Operating Committee, Conference Series llc LTD. Conferences

## Editorial Board Members of Supporting Journals:

**Ibrahim Faruqi**

University of Florida, USA

**Richard George Barbers**

University of Southern California, USA

**Vera P Krymskaya**

University of Pennsylvania, USA

**Amy L Firth**

University of Southern California, USA

**Florian Lang**

University of Tübingen, Germany

**Timothy Craig**

Penn State University, USA

**Joel S Greenberger**

University of Pittsburgh Cancer Institute, United States

**J Terrill Huggins**

Medical University of South Carolina, USA

# Program Announcement

3

Days Of Scientific  
Exchange

30+

Scientific Sessions

80+

International Expert  
Faculty Members

150+

Healthcare  
Professionals

20+

Exhibitors

## B2B Meetings

### Venue

Tokyo, Japan

### Important Dates

Abstract submission opens: October 10, 2018

Registration opens: October 10, 2018

Early bird registration: November 15, 2018

On spot registration: October 28, 2019

### Accommodation

A large number of rooms have been reserved. Discounted room rates for Pulmonary Meet 2019 participants are proposed. Only reservations made through the Conference will benefit these rates. The Congress Center can be easily reached by public transportation.

### Exhibition and Sponsorship

An Exhibition will be held concurrently with the Conference. The coffee break and lunch areas will be located adjacent to the booths. Thanks to exhibitors from all over the world, attendees will have a complete overview of new findings in the fields of Cardiology and Medicine.

### About Tokyo

Tokyo, the capital city of the parliamentary democratic monarchy of Japan, is also home to the Emperor's Palace and the seat of Government and Parliament. In East-Central Honshu, the largest of Japan's main islands, this heavily populated city is well worth exploring. The cultural side of Tokyo is famous for its numerous museums; theaters; festivals; internationally noted cuisine; and professional sports clubs, including baseball, football (or soccer), along with traditional Japanese pursuits like Sumo Wrestling. It's also a city rich in music and theater, with numerous venues featuring everything from Japanese to modern dramas, symphony orchestras, and pop and rock concerts. The chief attraction of Tokyo's Marunouchi district is the Imperial Palace with its beautiful 17<sup>th</sup>-century parks surrounded by walls and moats. Ginza is Tokyo's busiest shopping area and is as iconic as Times Square in New York, and much older: it's been the commercial center of the country for centuries, and is where five ancient roads connecting Japan's major cities all met. Dedicated to Kannon, the Buddhist goddess of compassion, Sensō-ji Temple was established in AD 645 and retains its original appearance despite having been rebuilt numerous times.