

TENTATIVE PROGRAM

40th Global

Psychiatry and Mental Health Conference

October 03-04, 2022 | London, UK

Theme:

*Dealing with Mental Health and Psychological
Effects of Covid-19*

MAIL: psychiatrycongress@lifesienceconferences.org

URL: <https://psychiatriccongress.insightconferences.com/>



DAY 1

MONDAY, 03rd OCTOBER

08:30-09:00	Registrations	
09:00-09:30	Introduction	
09:00-09:30	COFFEE BREAK	
09:50-11:50 Meeting Hall 01	KEYNOTE LECTURES	
09:00-09:30	Introduction	
09:00-09:30	MEETING Hall 02	
11:50-13:10	MEETING Hall 01	MEETING Hall 02
	Public Health Information Campaigns on Mental Health & COVID-19 Supporting resilience and mental well-being in frontline healthcare professionals during COVID 19 Suicide and suicide prevention in the time of COVID-19	Mental Health & COVID-19: Substance Use Psychopharmacology of COVID-19 Neuropsychiatric Manifestations of COVID 19 Mental Stress on COVID 19 Vaccines
03:10-13:15	GROUP PHOTO	
13:15-14:00	LUNCH BREAK	
11:50-13:10	MEETING Hall 01	MEETING Hall 02
	Coping with Stress and Anxiety in the time of Pandemic Role of Immuno-psychiatry for Clinical Practice Isolation and Mental Health	Role of Tele-psychiatry during Lockdown Covid 19 and Psychosis Yoga and Meditation
16:00-16:20	COFFEE BREAK	

DAY 2

TUESDAY, 04th OCTOBER

08:30-09:00	Registrations	
09:00-09:30	Introduction	
09:00-09:30	COFFEE BREAK	
09:50-11:50 Meeting Hall 01	KEYNOTE LECTURES	
09:00-09:30	Introduction	
09:00-09:30	MEETING Hall 02	
11:50-13:10	MEETING Hall 01	MEETING Hall 02
	Research on Mental Health & COVID-19 Effects of Mental Health on Children, Youth and Careers during Coronavirus Pandemic Isolation and Mental Health	Integrating Mental Health into Health Systems Impacts of Global Pandemic on Mental and emotional well being Human Rights and Mental Health COVID-19 and Schizophrenia
03:10-13:15	GROUP PHOTO	
13:15-14:00	LUNCH BREAK	
11:50-13:10	MEETING Hall 01	MEETING Hall 02
	Changes in Human behaviour during COVID 19 Mental Health Problems in Neurodevelopmental Disorders Trends in Psychosomatic Medicine	Mental Health Nursing at a Time of Pandemic Psychological Intervention in Post COVID-19 Inpatients Psychological Impact of Misinformation & Fake News
16:00-16:20	COFFEE BREAK	

EDITORIAL BOARD MEMBERS



Thereasa Cronan
Professor
San Diego State University,
California, USA



Andrew Weyman
Director
University Bath, UK



James P. Kelleher
Professor
New York Medical
College, USA



Joseph A. Boscarino
Senior Scientist
Icahn School of Medicine
at Mount Sinai, USA



Ahmed Yousif Ali
Head
National Rehabilitation
Centrer, UAE



Ulrich Voderholzer
Professor
University of Freiburg
Germany



Mauro Giovanni Carta
Professor,
University of Cagliari,
Italy



Shailesh Jain
Regional Chair
Texas Tech Health
Science Center, USA



Roberto Maniglio
Associate Professor
Mercatorum University,
Italy



Wei Wang
Professor
Norwegian University of
Science and
Technology, Norway



Stefano Lassi
Head
University of
Florence, Italy

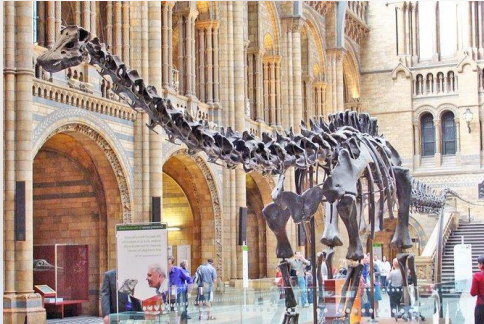


Daniel K. Winstead
Professor
Tulane University School
of Medicine, USA

PAST AFFILIATIONS

Theodore A Petti Rutgers-Robert Wood Johnson Medical School USA	Heather Renée Barker California State University USA	Svenja Nina Reinders Max Planck Institute of Psychiatry Germany	Chantal Martin Soelch University Fribourg, Switzerland	Ming-hui Li St.John's University USA
George Tolomiczenko University of Southern California USA	Matthew Rinaldi King's College London UK	Eva M Grasa Bello Universitat Autònoma de Barcelona Spain	Margret Gísladóttir Landspítali University Hospital Iceland	Zora Arfina Sukabdi Swinburne University of Technology, Australia
Talia Y Marroquin University of Western Australia Australia	Leng Anli Shandong University China	Catherine So-Kum Tang National University of Singapore Singapore	Aboelezz Mahmoud Kalboush Alnoor Specialist Hospital Saudi Arabia	Thomas Eduard Schlaepfer University of Bonn Germany
Andrea Fissi Studio di Psicoterapia e di Sessuologia, Italy	Laxmi Kumari AIIMS India	Joanne Zanetos College of Coastal Georgia USA	Yuan Zhou Chinese Academy of Sciences China	Samuel M.Y. Ho City University of Hong Kong Hong Kong

CITY ATTRACTIONS



Natural History Museum



The British Museum



St. Paul's Cathedral



Buckingham Palace



The London Eye



Big Ben