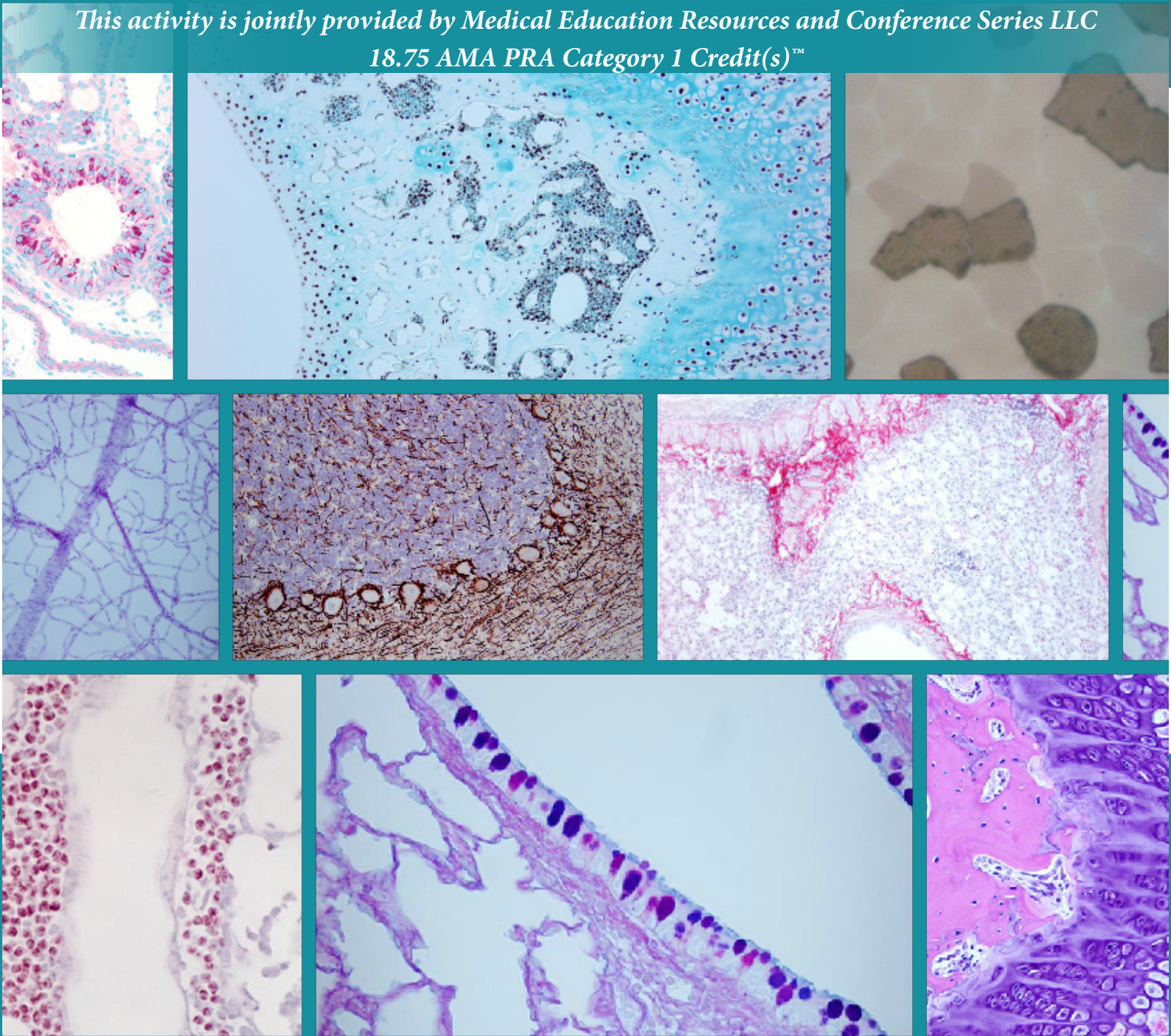


5th International Conference and Exhibition on

Pathology

May 09-11, 2016 Chicago, Illinois, USA

*This activity is jointly provided by Medical Education Resources and Conference Series LLC
18.75 AMA PRA Category 1 Credit(s)[™]*



Conference Series LLC

2360 Corporate Circle, Suite 400 Henderson, NV 89074-7722, USA Ph: +1 702 508 5200 Extn: 8047

e-mail: pathology@insightconferences.com; pathology@conferenceseries.com

Zurich

conference**series**.com

08:30-09:00

Opening Ceremony

Keynote Forum

- 09:00-09:05 **Introduction**
- 09:05-09:45 **John E Tomaszewski**
State University of New York at the University at Buffalo, USA
- 09:45-10:25 **Stefan Pambuccian**
Loyola University Medical Center, USA

Group Photo

Networking & Refreshments Break 10:30-10:45 @ Foyer

Track 1: Molecular Pathology

Track 2: Clinical Pathology

Track 3: Hematopathology

Session Chair: **Gabriela Oprea-Ilies**, Emory University School of Medicine, USASession Co-Chair: **C Cameron Yin**, University of Texas MD Anderson Cancer Center, USA

Session Introduction

- 10:45-11:10 **Title: Identifying chromatin structures and the underlying novel mutations that predict therapeutic responses to epigenetic drugs in MDS and AML**
Jason X Cheng, University of Chicago, USA
- 11:10-11:35 **Title: Clinical applications of immunoglobulin expression in acute myeloid leukemia**
C Cameron Yin, University of Texas MD Anderson Cancer Center, USA
- 11:35-12:00 **Title: MYC/BCL2 double hit lymphoma**
Shaoying Li, University of Texas MD Anderson Cancer Center, USA
- 12:00-12:25 **Title: Analysis of pre-analytic factors affecting the success of next-generation sequencing of solid tumors**
Hui Chen, University of Texas MD Anderson Cancer Center, USA
- 12:25-12:50 **Title: Worse overall survival in breast carcinoma expressing p16**
Gabriela Oprea-Ilies, Emory University School of Medicine, USA

Lunch Break 12:50-13:35 @ Athens

Track 4: Dermatopathology

Keynote Forum

- 13:35-14:15 **Clay J Cockerell**
President of Cockerell Dermatopathology, USA

Track 1: Molecular Pathology

Track 2: Clinical Pathology

Track 3: Hematopathology

Session Chair: **Xi Wang**, University of Rochester Medical Center, USASession Co-Chair: **Jessica A Hemminger**, The Ohio State University Wexner Medical Center, USA

- 14:15-14:40 **Title: Molecular tumor boards: An evolving practice of medicine**
Rajyasree Emmadi, University of Illinois Hospital & Health Sciences System, USA
- 14:40-15:05 **Title: SMARCA4/Brg1 coordinates genetic and epigenetic networks underlying Shh type medulloblastoma development**
Xuanming Shi, University of Texas Southwestern Medical Center, USA
- 15:05-15:30 **Title: ReadMax: A novel showcase approach for FISH biomarkers**
Joachim Moecks, Biomcon GmbH, Germany
- 15:30-15:55 **Title: Unclassifiable high grade B-cell lymphomas with overlapping features**
Jessica A Hemminger, The Ohio State University Wexner Medical Center, USA

Networking & Refreshments Break 15:55-16:10 @ Foyer

- 16:10-16:35 **Title: Understanding the heterogeneity of breast cancer: Referencing the normal breast luminal epithelium**
Xi Wang, University of Rochester Medical Center, USA

- 16:35-17:00 **Title: MET status in lung cancer: Searching in FISH for prevalent patterns of gene aberrance**
Joachim Moecks, Biomcon GmbH, Germany
- 17:00-17:25 **Title: Principles of genomic explanations for the complex histopathologic features of tumors**
Leon P Bignold, University of Adelaide, Australia
- 17:25-17:50 **Title: A novel tumor biomarker**
Shiyang Pan, The First Affiliated Hospital of Nanjing Medical University, China

Panel Discussions

Day 2 May 10, 2016

Zurich

Keynote Forum

- 10:00-10:40 **Guliz A Barkan**
Loyola University Medical Center, USA

Networking & Refreshments Break 10:40-10:55 @ Foyer

Sessions

Track 3: Hematopathology

Track 5: Gastrointestinal and Liver Pathology

Track 6: Oral and Maxillofacial Pathology

Session Chair: Adrian M Padurean, NeoGenomics, USA

Session Co-Chair: Jiaqi Shi, University of Michigan, USA

Session Introduction

- 10:55-11:20 **Title: Recommendations for collecting and processing good quality bone marrow specimens**
Adrian M Padurean, NeoGenomics, USA
- 11:20-11:45 **Title: MACC1 and its clinical significance as a biomarker and therapeutic target in colon cancer**
Wenqing Cao, New York University School of Medicine, USA
- 11:45-12:10 **Title: Intraductal papillary mucinous neoplasm (IPMN) versus intraductal tubulopapillary neoplasm (ITPN): How to differentiate these two entities?**
Jiaqi Shi, University of Michigan, USA
- 12:10-12:35 **Title: Necrotizing infections of the oral and maxillofacial region: Diagnosis, management and outcomes**
Alan Y Martinez, The MetroHealth System, USA

Lunch 12:35-13:20 @ Athens

Session Chair: Wenqing Cao, New York University School of Medicine, USA

Session Co-Chair: Mark Priebe, QualityStar LLC, USA

- 13:20-13:45 **Title: Grossing principles and techniques in maxillofacial pathology**
Izak B Dimenstein, Info-Genesis, USA
- 13:45-14:10 **Title: Salivary stress biomarkers- Are they predictors of academic assessment exams stress?**
Soliman Ouda, King abdalaziz university, Saudi Arabia
- 14:10-14:35 **Title: Are basal microvilli on the microvasculature of pancreatic ductal adenocarcinoma a tumor specific target for therapies?**
Hexige Saiyin, Fudan University School of Life Science, China

Track 7: Digital Pathology and e-Pathology

Track 8: Anatomical Pathology

Track 9: Surgical Pathology

Session Chair: Wenqing Cao, New York University School of Medicine, USA

Session Co-Chair: Mark Priebe, QualityStar LLC, USA

- 14:35-15:00 **Title: The kinds of genomic events for the histopathologic complexities of tumors**
Leon P Bignold, University of Adelaide, Australia
- 15:00-15:25 **Title: When value and credibility of pathologist are dependent on getting the diagnosis right quality assurance programs in anatomic pathology can drive improved patient and provider outcomes**
Mark Priebe, QualityStar LLC, USA
- 15:25-15:50 **Title: Burning mouth syndrome. What's new?**
Lorenzo Azzi, University of Insubria, Italy

Networking & Refreshments Break 15:50-16:05 @ Foyer

- 16:05-16:30 **Title: Histopathological features of granular cell tumor: A report of three cases**
Munaf Desai, Al Qassimi Hospital, UAE
- 16:30-16:55 **Title: Classification of degree of differentiation of colorectal neoplasm by the concept of the homology**
Kazuaki Nakane, Osaka University, Japan

- 16:55-17:20 **Title: An EGF motif of del1 suppresses notch function and inhibits efficient angiogenesis in vivo**
Hisataka Kitano, Nihon University School of Medicine, Japan
- 17:20-17:35 **Title: Pregnancy tumor; a review of literature and a report of unusual case**
Azin Mirzadeh, General Dentist, USA

Panel Discussions

Poster Presentations 16:00-16:45

- P01 **Title: Gross digital pathology advancement**
Izak Dimenstein, Info-Genesis, USA
- P02 **Title: Multifocal invasive ductal carcinoma with divergent expression of biological parameters in male with neurofibromatosis -1: A rare association**
Snehal Sonawane, University of Illinois at Chicago, USA
- P03 **Title: Syphilis manifesting as proctitis**
Eunice Choi, University of California, Los Angeles, USA
- P04 **Title: A multilocular simple bone cyst associated with cemento-osseous dysplasia**
Sung Yong Han, University of Detroit Mercy School of Dentistry, USA
- P05 **Title: Autopsy findings in RMND1 -related mitochondrial cytopathy**
Noorah Almadani, University of British Columbia, Canada
- P06 **Title: Apamin attenuates PDGF-BB-induced vascular smooth muscle cell proliferation and migration through Akt and Erk signaling pathway**
Joachim Moecks, Biomcon GmbH, Germany
- P07 **Title: evaluation of receptor for advanced glycation end products (RAGE) in helicobacter pylori associated and non-associated gastric carcinoma**
Tarek Aboushousha, Theodor Bilharz Research Institute, Egypt
- P08 **Title: Microsatellite instability, BRAF and KRAS mutations in colorectal cancer**
BOUDIDA-BERKANE Kenza, P&M Curie Center, Algeria

Day 3 May 11, 2016

Zurich

Sessions

Track 3: Hematopathology

Track 8: Anatomical Pathology

Track 6: Oral and Maxillofacial Pathology

Session Chair: Gabriela Oprea-Ilieș, Emory University School of Medicine, USA

Session Introduction

- 10:00-10:25 **Title: Genomic signatures in non-hodgkin lymphomas**
Hina Naushad Qureishi, University of Nebraska medical Center, USA
- 10:25-10:50 **Title: Mechanisms of action of carcinogens for the complexities of the tumor types**
Leon P Bignold, University of Adelaide, Australia

Networking & Refreshments Break 10:50-11:05 @ Foyer

- 11:05-11:30 **Title: Starting from a cyst in the mandible**
Lorenzo Azzi, University of Insubria, Italy

Young Researchers Forum

Session Chair: Xi Wang, University of Rochester Medical Center, USA

- 11:30-11:45 **Title: Incidence of H.Pylori in upper gi endoscopy biopsies: Prospective and retrospective study with emphasis on special staining methods**
Sanchari Saha, MGM Medical College, India
- 11:45-12:00 **Title: Unraveling the presence of sialoglycoconjugate specific antibodies in the serum samples of non-small cell lung cancer patients**
Kiranjeet Kaur, Post Graduate Institute of Medical Education and Research, India
- 12:00-12:15 **Title: AucoreAgshell nanoparticles with potent antibiofilm activity as novel nanomedicine**
Sougata Ghosh, Savitribai Phule Pune University, India

Track 6: Oral and Maxillofacial Pathology

- 12:15-12:40 **Title: OSCC & myeloid cells (TATE & mast cells)**
Priyanka Debta, Siksha 'O' Anusandhan University, India

Lunch 12:40-13:40 @ Athens

Panel Discussion & Certificate Felicitation