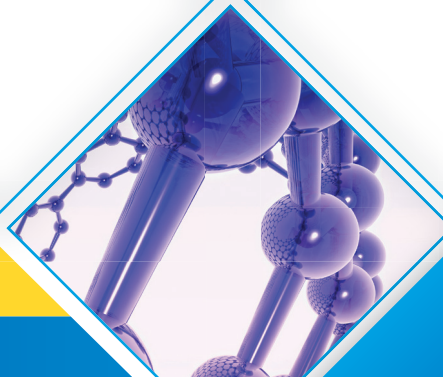
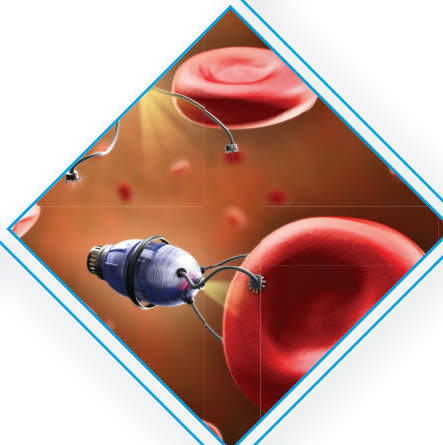


2<sup>nd</sup> International Conference and Exhibition on

# Nanomedicine and Drug Delivery

May 21-23,  
2018  
Tokyo, Japan

Theme:  
Challenges and  
Innovations in  
Nanomedicine and Drug  
Delivery Research



Dear Colleagues,

Conference Series is delighted to welcome you to Tokyo, Japan for the prestigious 2<sup>nd</sup> International Conference and Exhibition on Nanomedicine and Drug Delivery. Nanodelivery 2018 will focus on the theme "Challenges and Innovations in Nanomedicine and Drug Delivery Research". We are confident that you will enjoy the Scientific Program of this upcoming Conference. We look forward to see you at Tokyo, Japan.

With Regards,  
Nanodelivery 2018 Operating Committee  
Conference Series Conferences

### Editorial Board Members of Supporting Journals:

Andrij Holian  
The University of Montana, USA

Hai-Feng Frank Ji  
Drexel University, USA

Xuping Sun  
Chinese Academy of Sciences, PR  
China

Noah Federman  
Jonsson Comprehensive Cancer  
Center, USA

Ashok Mulchandani  
University of California, USA

Bozena Michniak-Kohn  
The State University of New Jersey,  
USA

Neal Davies  
University of Manitoba, USA



# Program Announcement

## Accommodation

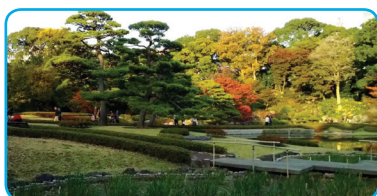
A large number of rooms have been reserved. Discounted room rates for Nanodelivery 2018 participants are proposed. Only reservations made through the Conference will benefit these rates. The Congress Center can be easily reached by Public transportation.

## Exhibition and Sponsorship

An Exhibition will be held concurrently with the Congress. The coffee break and lunch areas will be located adjacent to the booths. Thanks to exhibitors from all over the world, attendees will have a complete overview of new findings in the field of Nanomedicine and drug delivery.

## About Tokyo

Tokyo is Japan's capital and the world's most populous metropolis. It is also one of Japan's 47 prefectures, consisting of 23 central city wards and multiple cities, towns and villages west of the city center. The Izu and Ogasawara Islands are also part of Tokyo. Prior to 1868, Tokyo was known as Edo. A small castle town in the 16th century, Edo became Japan's political center in 1603 when Tokugawa Ieyasu established his feudal government there. A few decades later, Edo had grown into one of the world's most populous cities. With the Meiji Restoration of 1868, the emperor and capital moved from Kyoto to Edo, which was renamed Tokyo ("Eastern Capital"). Large parts of Tokyo were destroyed in the Great Kanto Earthquake of 1923 and in the air raids of 1945.



## Important Dates

Abstract submission opens: June 19, 2017

Registration opens: June 19, 2017

Early bird registration: November 27, 2017

On spot registration: May 21, 2018

## Venue

Hilton Tokyo Narita

56 Kosuge, Narita

Chiba Prefecture, 286-0127, Japan



## Abstract Submission

<http://nanomedicine.pharmaceuticalconferences.com/abstract-submission.php>

Note: All the relevant abstracts will be accepted and published in respective conference proceedings.

## Registration

<http://nanomedicine.pharmaceuticalconferences.com/registration.php>

## Conference Secretariat

One Commerce Center-1201, Orange St. #600

Wilmington, Zip 19899, Delaware, USA

Tel: +1-888-843-8169, Fax: +1-650-618-1417

## Email

[nanodelivery@pharmaceuticalconferences.org](mailto:nanodelivery@pharmaceuticalconferences.org)

[nanodelivery@conferenceseries.net](mailto:nanodelivery@conferenceseries.net)

