

## TENTATIVE PROGRAM

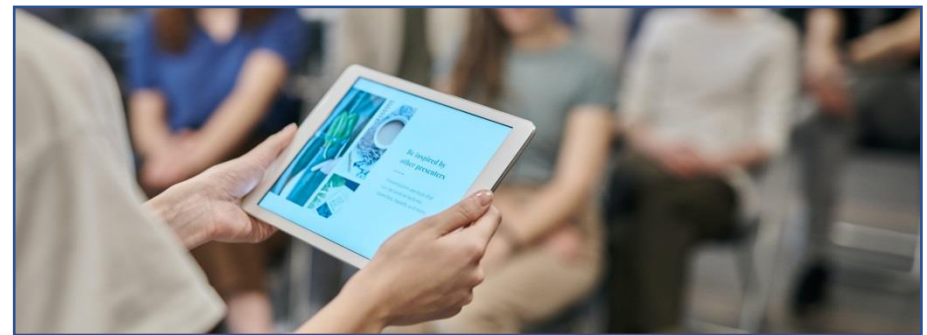
# 42<sup>nd</sup> World Conference on Lung Diseases & Pulmonology

October 03-04, 2022 London, UK

Theme: *“Coronavirus and the outbreak of the respiratory illness”*

MAIL: [lungdiseases@healthconferences.org](mailto:lungdiseases@healthconferences.org)

URL: <https://lung-diseases.insightconferences.com/>



DAY 1

08:30-09:00	<b>Registrations</b>	
09:00-09:30	<b>INTRODUCTION</b>	
09:00-09:30	<b>COFFEE BREAK</b>	
09:50-11:50 <b>Meeting Hall 01</b>	<b>KEYNOTE LECTURES</b>	
09:00-09:30	<b>INTRODUCTION</b>	
09:00-09:30	<b>MEETING HALL 02</b>	
11:50-13:10	<b>MEETING Hall 01</b>	<b>MEETING Hall 02</b>
	<ul style="list-style-type: none"> <li>• <b>Chronic Obstructive Pulmonary Disease</b></li> <li>• <b>Lung Diseases</b></li> </ul>	<ul style="list-style-type: none"> <li>• <b>Interstitial lung disease</b></li> <li>• <b>Some types of asthma</b></li> </ul>
03:10-13:15	<b>GROUP PHOTO</b>	
13:15-14:00	<b>LUNCH BREAK</b>	
11:50-13:10	<b>MEETING Hall 01</b>	<b>MEETING Hall 02</b>
	<ul style="list-style-type: none"> <li>• <b>Pulmonary Rehabilitation</b></li> <li>• <b>Pulmonary Hypertension</b></li> </ul>	<ul style="list-style-type: none"> <li>• <b>Cardiopulmonary Disorders</b></li> <li>• <b>Severe Acute Respiratory Syndrome (SARS)</b></li> </ul>
16:00-16:20	<b>COFFEE BREAK</b>	

DAY 2

08:30-09:00	<b>Registrations</b>	
09:00-09:30	<b>INTRODUCTION</b>	
09:00-09:30	<b>COFFEE BREAK</b>	
09:50-11:50 <b>Meeting Hall 01</b>	<b>KEYNOTE LECTURES</b>	
09:00-09:30	<b>INTRODUCTION</b>	
09:00-09:30	<b>MEETING HALL 02</b>	
11:50-13:10	<b>MEETING Hall 01</b>	<b>MEETING Hall 02</b>
	<ul style="list-style-type: none"> <li>• Asthma and Allergy</li> <li>• Tuberculosis</li> </ul>	<ul style="list-style-type: none"> <li>• Obstructive sleep apnea</li> <li>• Pediatric Pulmonology &amp; Critical care</li> <li>• Aspiration</li> </ul>
03:10-13:15	<b>GROUP PHOTO</b>	
13:15-14:00	<b>LUNCH BREAK</b>	
11:50-13:10	<b>MEETING Hall 01</b>	<b>MEETING Hall 02</b>
	<ul style="list-style-type: none"> <li>• Breathing device</li> <li>• Bronchitis</li> <li>• Lung cancer</li> </ul>	<ul style="list-style-type: none"> <li>• Self-Management and Prevention</li> <li>• Rheumatic-fever</li> <li>• Lung-fever</li> </ul>
16:00-16:20	<b>COFFEE BREAK</b>	

EDITORIAL BOARD MEMBERS



**Daisuke Tsuruta**, PhD  
Executive Editor  
Department of Dermatology  
Kurume University, Japan



**John J. Murray**, MD, PhD  
Professor, Internal  
Medicine and Biomedical  
Sciences  
Meharry Medical College,  
USA



**Ibrahim Faruqi**  
Editor-in-Chief  
Director,  
University of Florida,  
Interstitial Lung Disease  
Program, USA



**Vera P Krymskaya**  
Executive Editor  
Associate Professor  
Pulmonary, Allergy & Critical  
Care Division Pennsylvania  
Medical Center, USA



**Kamal A Mohammed**  
Executive Editor  
Associate Professor  
University of Florida, Division of  
Pulmonary, Critical Care & Sleep  
Medicine, USA



**Megan Frederick**  
Clinical Therapist,  
Respiratory Therapy  
CanSleep Services ,  
Canada



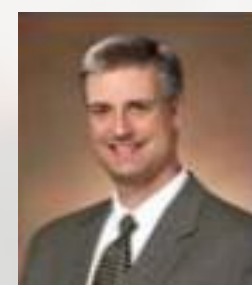
**Al-Jumaily Ahmed**  
Professor of Biomechanical  
Engineering Director,  
Institute of Biomedical  
Technologies, New Zealand



**Reynold A Panettieri**  
Director  
University of Pennsylvania, ,  
Airways Biology Initiative, USA



**Stephen P Peters**  
Director of Research,  
Section on Pulmonary, Critical Care,  
Allergy & Immunological Diseases,  
Boulevard School of Medicine, USA



**Joseph T Crossno**  
Associate Fellowship Program  
Director, Department of  
Medicine University of Colorado,  
Denve, USA

# CITY ATTRACTIONS



**The Tower of London and  
Tower Bridge**



**Big Ben and Parliament**



**Piccadilly Circus and Trafalgar Square**



**Hyde Park**



**St. Paul's Cathedral**



**Covent Garden**