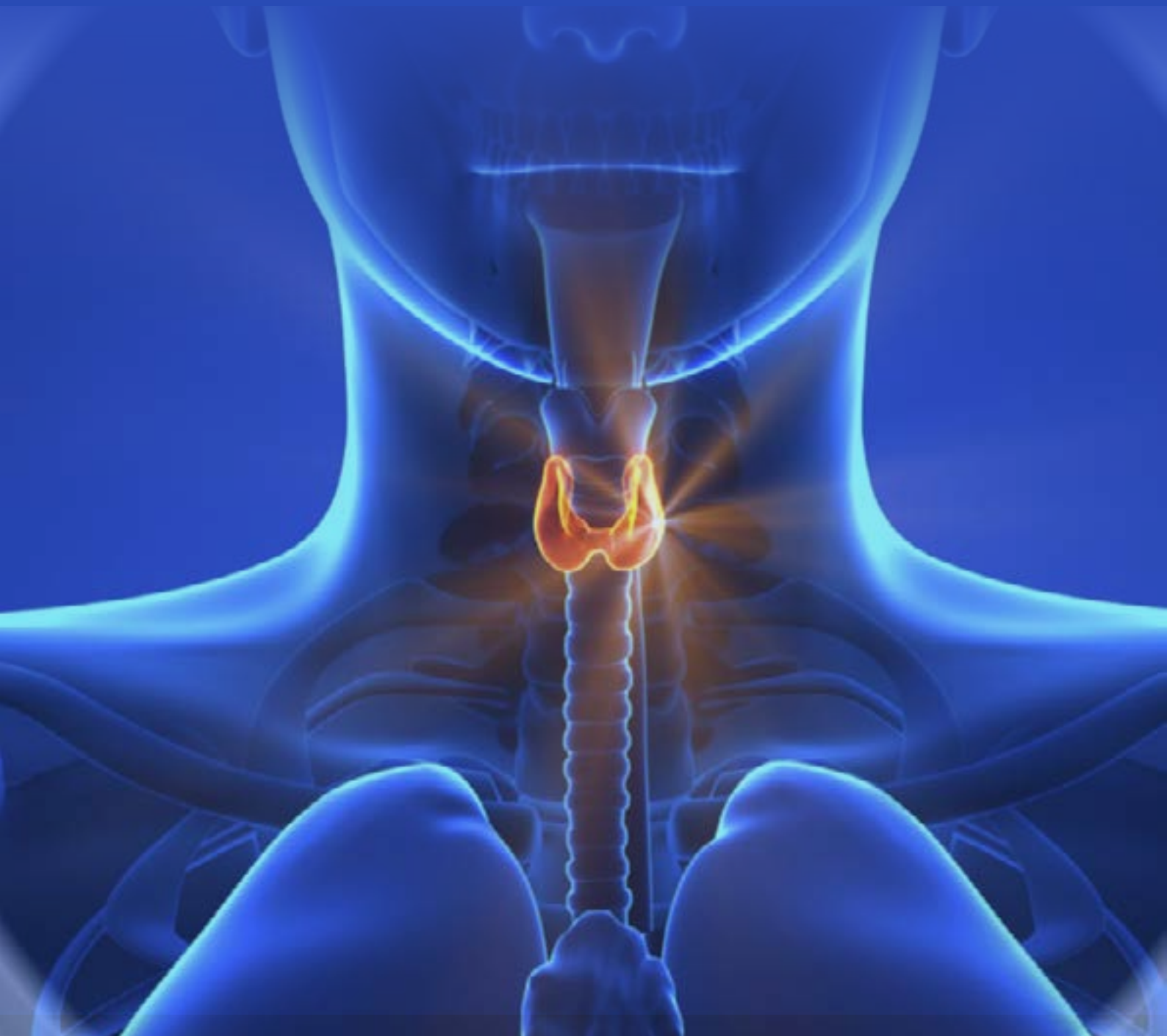


**conference**series.com

20th International Conference on

# Endocrinology and Metabolic Disorders

February 24-25, 2025 London, UK



**S C I E N T I F I C P R O G R A M**

08:30-09:00 Registrations

09:00-09:30 Introduction

**09:30-09:50 COFFEE BREAK**

09:50-11:50  
Meeting Hall 01

**KEYNOTE LECTURES**

11:50-13:10

**MEETING HALL 01**

**MEETING HALL 02**

Talks On: Molecular and Cellular Endocrinology

Talks On: Pediatric Endocrinology

Endocrinology and Metabolism

Obesity and Metabolism

Diabetes

Neuroendocrinology and Pituitary

**13:10-13:15 GROUP PHOTO**

**13:15-14:00 LUNCH BREAK**

14:00-16:00

**MEETING HALL 01**

**MEETING HALL 02**

Talks On: Endocrine Disorders

Talks On: Endocrine Oncology

Endocrine and Metabolic Disorders in  
Pregnancy

Cardiovascular Endocrinology

Diabetic Disorders and Treatment

Endocrine surgery

**16:00-16:20 COFFEE BREAK**

**MEETING HALL 01 (16:20-17:00)**

Young Researchers in  
Nutrition and Metabolic Reactions

09:00-10:30  
 Meeting Hall 01

**KEYNOTE LECTURES**

10:30-10:50 COFFEE BREAK

	MEETING HALL 01	MEETING HALL 02
10:50-12:50	Talks On: EDCs (Endocrine Disrupting Chemicals)	Talks On: Neuroendocrinology
	Endocrine Tumor Genetics	Adrenal and Thyroid Disorders
	Advancements in Endocrinology	Treatment of Endocrine Disorders

12:50-13:35 LUNCH BREAK

	MEETING HALL 01	MEETING HALL 02
13:35-15:55	Talks On: Stem Cell treatment of Endocrine Disorders	Talks On: Gynecology
	Reproductive Endocrinology	Endocrinology and Nephrology
	Genomic Endocrinology	Metabolic Syndrome

15:55-16:15 COFFEE BREAK

	MEETING HALL 01 (16:15-17:00)	MEETING HALL 01 (17:00-18:00)
	Poster Presentations	Workshop

**Awards & Closing Ceremony**

# PAST AFFILIATES

**Gary d. Stoner**

*The Ohio State University, USA*

**Marcello Menapace**

*M&Ms Consulting Ltd, UK*

**Muscolo Adele**

*Mediterranea University of Reggio Calabria, Italy*

**Surajit Mitra**

*Post-Harvest Technology, India*

**Francois J. Roman**

*Amylgen, France*

**Xiao-Lu Yin**

*Soochow University, China*

**Raluca Maria Pop**

*University of Medicine and Pharmacy from Cluj-Napoca, Romania*

**Sima Hamadeh**

*Haigazian University, Lebanon*

**Panupong Puttarak**

*Prince of Songkla University, Thailand*

**David A. Brown**

*University of Limpopo, South Africa*

**Qianru Chen**

*Ocean University of China, China*

**Jones W.Ng'ambi**

*University of Limpopo, South Africa*

**Yu-Qing Zhang**

*Soochow University, China*

**Paloma Collado**

*National Distance Education University (UNED)*

**Ryoko Wada**

*Tokyo Kasei University, Japan*

**Nami Yamamoto**

*Tokyo Kasei University, Japan*

**Boo-Yong Lee**

*CHA University, South Korea*

**Akiko Koizumi**

*Tokyo Kasei University, Japan*

**Andrey Tiuffin**

*University College Cork, Ireland*

**Minako Kudo**

*Tokyo Kasei University, Japan*

**Xinxing Xu**

*China Agricultural University, China*

**Shiliang Jia**

*China Agricultural University, China*

**Machiko Mineki**

*Tokyo Kasei University, Japan*

# PAST AFFILIATES

Alireza Naseri

[DTU Food, Denmark](#)

Amanda Naam

[TRU-ID Ltd., Canada](#)

Ana Nurhasanah

[Indonesian Centre for Agricultural Engineering](#)

[Research and Development, Indonesia](#)

Busra Sahin

[Cankiri Karatekin University, Turkey](#)

Christian Hitti

[Lebanon](#)

Estefania F Garcia

[Federal University of Paraiba, Brazil](#)

Farshad Bolourchifard

[Politecnico di Milano, Italy](#)

Fatema Kadhem

[Hamad Medical Corporation, Qatar](#)

Jasim Zia

[Smart Materials - Italian Institute of Technology, Italy](#)

Maria A Karlsson

[Swedish University of Agricultural Sciences, Sweden](#)

Michae Mettle-Olympio

[Ghana](#)

MOUSAVI Mahta

[UNIVERSITY OF LORRAINE, France](#)

Najat AL-Sharshani

[Hamad Medical Corporation, Qatar](#)

Najwa AL-Sharshani

[Hamad Medical Corporation, Qatar](#)

Petronila Mlowe

[Britain Tanzania Society, UK](#)

Rishov Sircar

[Sam Higginbottom Institute of Agriculture, Technology and Sciences, India](#)

Sarah Timperley

[Solvay, UK](#)

Shima Akhondi

[Politecnico di Milano, Italy](#)

Sophie Moille

[Nestlé Research Centre, Switzerland](#)

Sunday Joseph Olamide

[Nigeria](#)



# London Attractions



# Glimpses of Endocrinology Conferences

