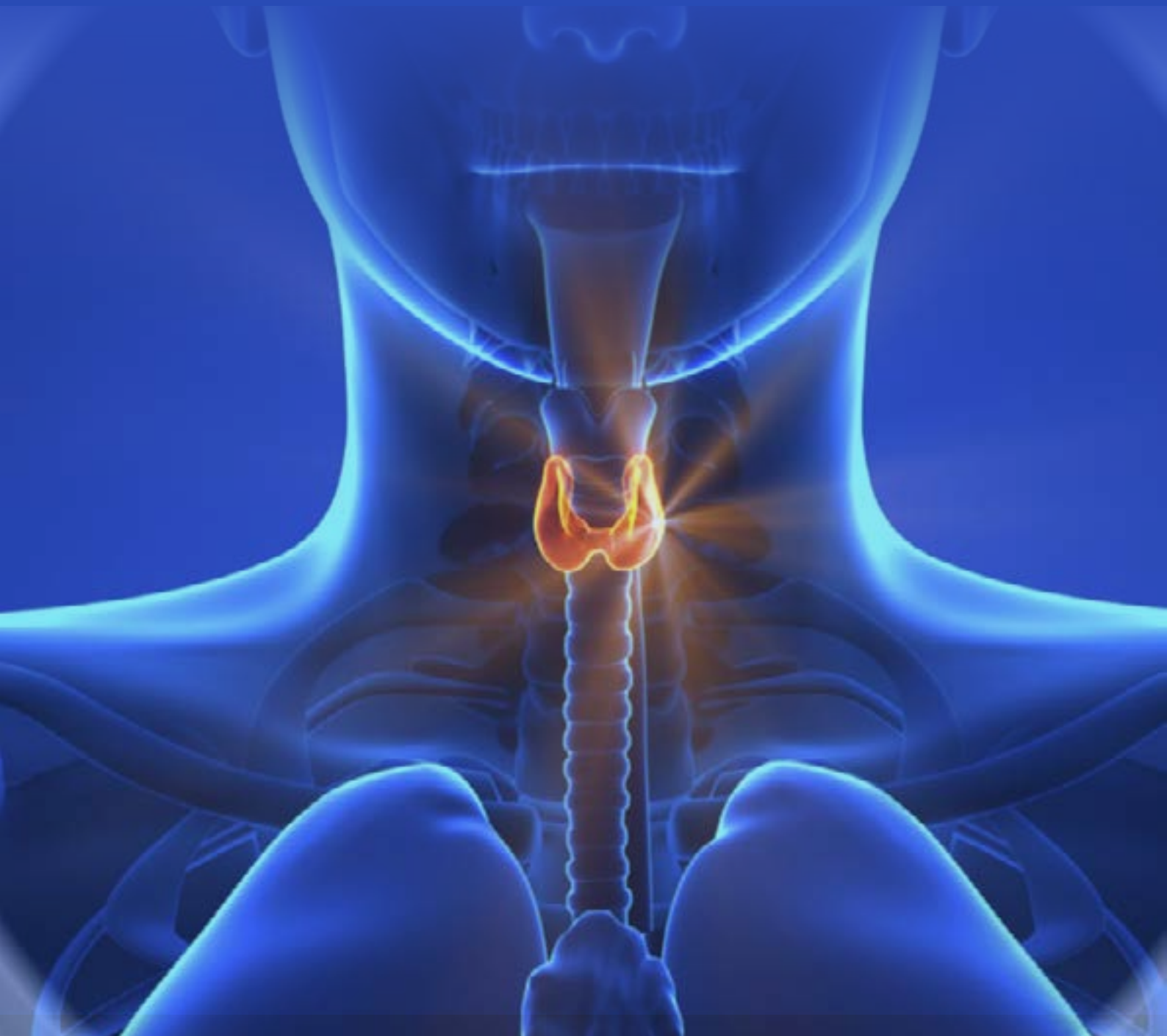


conferenceseries.com

18th International Conference on

Endocrinology and Metabolic Disorders

September 18-19, 2023 | Rome, Italy



S C I E N T I F I C P R O G R A M

08:30-09:00 Registrations

09:00-09:30 Introduction

09:30-09:50 COFFEE BREAK

09:50-11:50 Meeting Hall 01 **KEYNOTE LECTURES**

	MEETING HALL 01	MEETING HALL 02
11:50-13:10	Talks On: Molecular and Cellular Endocrinology	Talks On: Pediatric Endocrinology
	Endocrinology and Metabolism	Obesity and Metabolism
	Diabetes	Neuroendocrinology and Pituitary

13:10-13:15 GROUP PHOTO

13:15-14:00 LUNCH BREAK

	MEETING HALL 01	MEETING HALL 02
14:00-16:00	Talks On: Endocrine Disorders	Talks On: Endocrine Oncology
	Endocrine and Metabolic Disorders in Pregnancy	Cardiovascular Endocrinology
	Diabetic Disorders and Treatment	Endocrine surgery

16:00-16:20 COFFEE BREAK

MEETING HALL 01 (16:20-17:00)
Young Researchers in
Nutrition and Metabolic Reactions

09:00-10:30
 Meeting Hall 01

KEYNOTE LECTURES

10:30-10:50 COFFEE BREAK

	MEETING HALL 01	MEETING HALL 02
10:50-12:50	Talks On: EDCs (Endocrine Disrupting Chemicals)	Talks On: Neuroendocrinology
	Endocrine Tumor Genetics	Adrenal and Thyroid Disorders
	Advancements in Endocrinology	Treatment of Endocrine Disorders

12:50-13:35 LUNCH BREAK

	MEETING HALL 01	MEETING HALL 02
13:35-15:55	Talks On: Stem Cell treatment of Endocrine Disorders	Talks On: Gynecology
	Reproductive Endocrinology	Endocrinology and Nephrology
	Genomic Endocrinology	Metabolic Syndrome

15:55-16:15 COFFEE BREAK

	MEETING HALL 01 (16:15-17:00)	MEETING HALL 01 (17:00-18:00)
	Poster Presentations	Workshop

Awards & Closing Ceremony

PAST AFFILIATES

Gary d. Stoner

The Ohio State University, USA

Marcello Menapace

M&Ms Consulting Ltd, UK

Muscolo Adele

Mediterranea University of Reggio Calabria, Italy

Surajit Mitra

Post-Harvest Technology, India

Francois J. Roman

Amylgen, France

Xiao-Lu Yin

Soochow University, China

Raluca Maria Pop

University of Medicine and Pharmacy from Cluj-Napoca, Romania

Sima Hamadeh

Haigazian University, Lebanon

Panupong Puttarak

Prince of Songkla University, Thailand

David A. Brown

University of Limpopo, South Africa

Qianru Chen

Ocean University of China, China

Jones W.Ng'ambi

University of Limpopo, South Africa

Yu-Qing Zhang

Soochow University, China

Paloma Collado

National Distance Education University (UNED)

Ryoko Wada

Tokyo Kasei University, Japan

Nami Yamamoto

Tokyo Kasei University, Japan

Boo-Yong Lee

CHA University, South Korea

Akiko Koizumi

Tokyo Kasei University, Japan

Andrey Tiuffin

University College Cork, Ireland

Minako Kudo

Tokyo Kasei University, Japan

Xinxing Xu

China Agricultural University, China

Shiliang Jia

China Agricultural University, China

Machiko Mineki

Tokyo Kasei University, Japan

PAST AFFILIATES

Alireza Naseri

[DTU Food, Denmark](#)

Amanda Naam

[TRU-ID Ltd., Canada](#)

Ana Nurhasanah

[Indonesian Centre for Agricultural Engineering](#)

[Research and Development, Indonesia](#)

Busra Sahin

[Cankiri Karatekin University, Turkey](#)

Christian Hitti

[Lebanon](#)

Estefania F Garcia

[Federal University of Paraiba, Brazil](#)

Farshad Bolourchifard

[Politecnico di Milano, Italy](#)

Fatema Kadhem

[Hamad Medical Corporation, Qatar](#)

Jasim Zia

[Smart Materials - Italian Institute of Technology, Italy](#)

Maria A Karlsson

[Swedish University of Agricultural Sciences, Sweden](#)

Michae Mettle-Olympio

[Ghana](#)

MOUSAVI Mahta

[UNIVERSITY OF LORRAINE, France](#)

Najat AL-Sharshani

[Hamad Medical Corporation, Qatar](#)

Najwa AL-Sharshani

[Hamad Medical Corporation, Qatar](#)

Petronila Mlowe

[Britain Tanzania Society, UK](#)

Rishov Sircar

[Sam Higginbottom Institute of Agriculture, Technology and Sciences, India](#)

Sarah Timperley

[Solvay, UK](#)

Shima Akhondi

[Politecnico di Milano, Italy](#)

Sophie Moille

[Nestlé Research Centre, Switzerland](#)

Sunday Joseph Olamide

[Nigeria](#)

Rome Attractions



The forum



The Pantheon



st-peters-square



Colosseum



trevi-fountain



st peters basilica



vatican city



Monument to Garibaldi



Vittorio Emanuele II Monument

Glimpses of Endocrinology Conferences

