

# TENTATIVE PROGRAM

**29th International Conference on  
Clinical Diabetes, Diabetic  
Medication & Treatment**

**Jun 7-8, 2021 Amsterdam, Netherland**

**Theme:**

*“Diabetes awareness because it matters”.*

**MAIL:** [endocrine@meetingsnexpo.com](mailto:endocrine@meetingsnexpo.com)

**URL:** <https://diabeticmedications.conferenceseries.com/>



**D A Y 1**

**M O N D A Y , 7 t h J u n e**

08:30-09:00	<b>Registrations</b>	
09:00-09:30	Introduction	
09:00-09:30	COFFEE BREAK	
09:50-11:50 <b>Meeting Hall 01</b>	<b>KEYNOTE LECTURES</b>	
09:00-09:30	Introduction	
09:00-09:30	<b>MEETING Hall 02</b>	
11:50-13:10	<b>MEETING Hall 01</b>	<b>MEETING Hall 02</b>
	Diabetes Endocrinology Type-1 and Type-2 Diabetes Symptoms of Diabetes	Pregnancy, Reproduction and Infertility In Children's, Teens & Adolescents Alternative therapies & Complications
03:10-13:15	GROUP PHOTO	
13:15-14:00	LUNCH BREAK	
11:50-13:10	<b>MEETING Hall 01</b>	<b>MEETING Hall 02</b>
	Surgery and Care Clinical Studies & Case Reports Research & Advanced Technologies	Challenges and Improvements Endocrine Cancer Endocrine Tumors
16:00-16:20	COFFEE BREAK	

**DAY 2**

**TUESDAY, 8<sup>th</sup> June**

08:30-09:00	<b>Registrations</b>	
09:00-09:30	Introduction	
09:00-09:30	COFFEE BREAK	
09:50-11:50 <b>Meeting Hall 01</b>	<b>KEYNOTE LECTURES</b>	
09:00-09:30	Introduction	
09:00-09:30	<b>MEETING Hall 02</b>	
11:50-13:10	<b>MEETING Hall 01</b>	<b>MEETING Hall 02</b>
	Risk Factors of Endocrinology Energy Balance, Obesity and Nutritional balancing Medicare Management	Diabetes and Science Technology Diagnosis and Advance Treatments Diabetic Drug Market
03:10-13:15	GROUP PHOTO	
13:15-14:00	LUNCH BREAK	
11:50-13:10	<b>MEETING Hall 01</b>	<b>MEETING Hall 02</b>
	Present Scenarios of Diabetes Endocrinology Insulin and Beta Cell Targeting Diabetic Heart Diseases and Management	Pediatric Diabetes Diabetic Nephropathy Diabetic Eye Complications Diabetic Coma and Nursing
16:00-16:20	COFFEE BREAK	

EDITORIAL BOARD MEMBERS



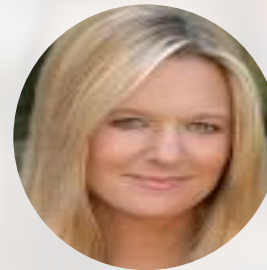
Andrew T. DeWan  
Division of Chronic  
Disease  
Yale School of Public  
Health Epidemiology



Gilbert Saint-Jean  
Epidemiology and  
Public Health  
University of Miami  
Miller



Janis Campbell  
The University of  
Oklahoma Health  
Sciences Center  
USA



**Anne W. Rimoin**  
Department of  
Epidemiology  
University of  
California



James J. Collins  
School of Health  
Sciences  
Saginaw Valley State  
University Bay City



Carri Casteel  
Gillings School of  
Global Public Health  
University of North  
Carolina



Long-Fu Xi  
Department of  
Epidemiology  
University of  
Washington  
USA



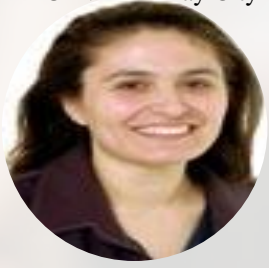
John Herbold  
Department of  
Epidemiology and  
Public Health  
University of Texas  
USA



Leonor Chacin-Bonilla  
Universidad del Zulia  
Venezuela



Christian Napoli  
Dept. of Biomedical  
Science and Human  
Oncology  
University of Bari  
Italy



Tulay Koru-Sengul  
Department of  
Epidemiology and  
Public Health  
University of Miami  
Miller  
USA



**Farzana Jasmine**  
Department of Health  
Studies  
The University of  
Chicago  
USA

**PAST AFFILIATIONS**

<p><b>Chung-Hoon Kim, Professor, Department of Obstetrics and Gynecology, University of Ulsan, Korea</b></p>	<p><b>Bruce I Rose, Infertility Solutions, P. C., Pennsylvania, USA</b></p>	<p><b>Rajesh Kumar, Research Fellow, Dana-Farber Cancer Institute, Harvard Medical School, Boston, USA.</b></p>	<p><b>Vickram AS, Research Scientist, Department of Biotechnology, VIT University, Vellore, Tamil Nadu, INDIA</b></p>	<p><b>Asangla Ao, Departments of Obstetrics and Gynecology and Human Genetics, McGill University, Canada</b></p>
<p><b>Dennis Larsson, Professor of Biomedicine, University of Skövde, Sweden</b></p>	<p><b>JIA LIU, Research Associate University of Virginia Charlottesville VA United States</b></p>	<p><b>RAJASEKHARREDDY PALA, Research Assistant Professor Chapman University and UCI, Irvine.</b></p>	<p><b>Leonardo Roeber, Doctor at Department of Clinical Research, Federal University of Uberlândia, Brazil</b></p>	<p><b>Didier Vieau, Professor of Animal Physiology in University of Lille, UFR of Biology Lille, France</b></p>
<p><b>Rosaria Meccariello, Associate Professor of Biology at the University of Naples Parthenope, Naples, Italy</b></p>	<p><b>Executive Editor Gordon Stephen Smith University of Maryland School of Medicine USA</b></p>	<p><b>Haroutune Krikor Armenian University of California USA</b></p>	<p><b>Zhenqiu Liu Epidemiology and Public Health University of Maryland USA</b></p>	<p><b>Anthony Clifford Keech The University of Sydney Australia</b></p>
<p><b>Zhenqiu Liu Epidemiology and Public Health University of Maryland USA</b></p>	<p><b>Christine E. McLaren University of California USA</b></p>	<p><b><a href="#">Susan M. Abughosh</a> University of Houston College of Pharmacy Texas Medical Center Campus USA</b></p>	<p><b>Mirza Shaper Division of Epidemiology University of Texas Houston Health Sciences Center USA</b></p>	<p><b>David S. Lopez Division of Epidemiology &amp; Disease Control University of Texas School of Public Health USA</b></p>

CITY ATTRACTIONS



**Rijksmuseum**



**Jordaan**



**Vondelpark**



**Dam Square**



**Royal Palace of Amsterdam**



**The Botanical Gardens**