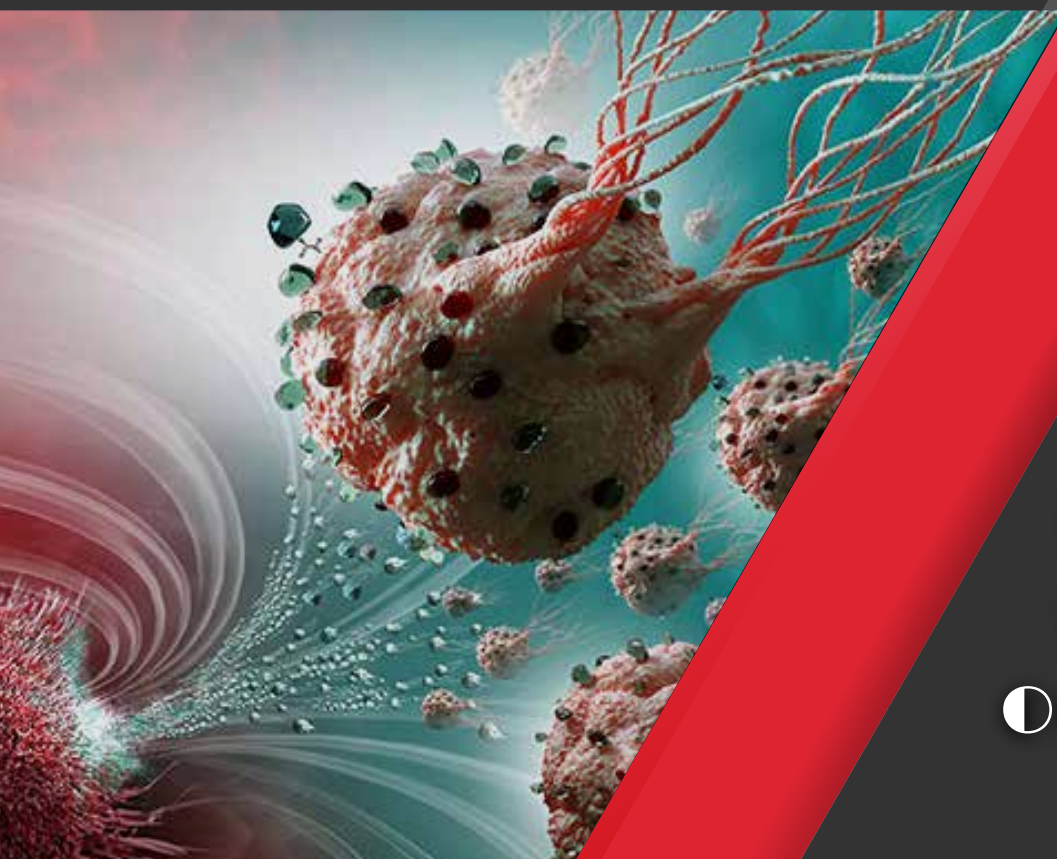


## 30<sup>th</sup> International Conference on **Cancer Research and Therapy**

*Theme: "Lifesaving mission and innovations  
to end Cancer"*



**November  
12-13, 2018  
Osaka, Japan**

### *Conference Secretariat*

47 Churchfield road  
London W3 6AY  
+1-650-889-4686

*email: [oncologymeet@oncologymeet.com](mailto:oncologymeet@oncologymeet.com)*

Dear Colleagues,

Conference Series llc LTD is delighted to welcome you to *Osaka, Japan* for the prestigious *30<sup>th</sup> International Conference on Cancer Research and Therapy*. *Cancer Research Asia Pacific 2018* will focus on the theme “*Lifesaving mission and innovations to end Cancer*”. We are confident that you will enjoy the Scientific Program of this upcoming Conference.

We look forward to see you at *Osaka, Japan*.

With Regards,

*Cancer Research Asia Pacific 2018 Operating Committee*  
*Conference Series llc LTD Conferences*

## *Editorial Board Members of Supporting Journals:*

*Kurt S Zaenker*  
*Witten-Herdecke University, Germany*

*William E Grizzle*  
*University of Alabama, USA*

*Mong-Hong Lee*  
*University of Texas, USA*

*Masayoshi Yamaguchi*  
*Emory University, USA*

*Judith A. Smith*  
*The University of Texas, USA*

*Ming Tan*  
*Mitchell Cancer Institute, USA*

# Program Announcement

## *Accommodation*

*A large number of rooms have been reserved. Discounted room rates for Cancer Research Asia Pacific 2018 participants are proposed. Only reservations made through the Conference will benefit these rates. The Congress Center can be easily reached by Public transportation.*

## *Exhibition and Sponsorship*

*An Exhibition will be held concurrently with the Congress. The coffee break and lunch areas will be located adjacent to the booths. Thanks to exhibitors from all over the world, attendees will have a complete overview of new findings in the field of 30th International Conference on Cancer Research and Therapy.*

## *About Osaka*

*Japan is an archipelago in the Pacific region. It is separated from the east coast of Asia by the Sea of Japan. It consists of a great string of islands in a northeast-southwest arc that stretches for approximately 1,500 miles (2,400 km) through the western North Pacific Ocean. Nearly the entire land area is taken up by the country's four main islands; from north to south these are Hokkaido (Hokkaidō), Honshu (Honshū), Shikoku, and Kyushu (Kyūshū). Japanese economy grew very quickly and it serves as a major economic power in the world. Much of this growth resulted in increase in worker productivity. This higher productivity was due mainly to: increased capital (machines, etc.) per worker, advance in technology, a highly educated and skilled labour force, supportive government policies and a good world trade environment.*



## *Abstract Submission*

<https://cancerresearch.cancersummit.org/abstract-submission.php>

*Note: All the relevant abstracts will be accepted and published in respective conference proceedings.*

## *Registration*

<https://cancerresearch.cancersummit.org/registration.php>

## *Important Dates*

*Abstract submission opens: January 10, 2018*

*Registration opens: January 10, 2018*

*Early bird registration: June 10, 2018*

*On spot registration: November 12, 2018*

## *Venue*

*Osaka, Japan*



## *Conference Secretariat*

*47 Churchfield road*

*London W3 6AY*

*+1-650-889-4686*

*email: [oncologymeet@oncologymeet.com](mailto:oncologymeet@oncologymeet.com)*