

International Conference on
Cancer and Care

December 10-11, 2020 | Osaka, Japan

Dear Colleagues

Conference series proudly announces the **International Conference on Cancer and Care** scheduled during **December 10-11, 2020** in **Osaka, Japan**. The conference emphasizes the theme “**Exploring Advancements in Cancer Care**”.

It's an International Conference where you can select and investigate your exploration and get rules from specialists in flow look into and improvements. They will help you in research questions and guarantee your examination experimentally acceptable. Cancer & Care 2020 will also provide the excellent opportunity to meet experts, exchange information, and strengthen the collaboration among Directors, Researchers, Associate Professors, and Scholars from both academia and industry.

Conference Highlights :

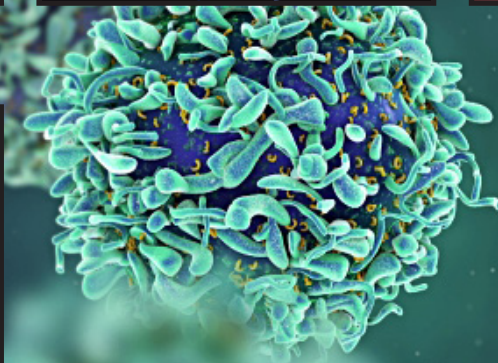
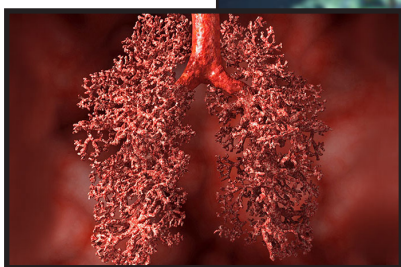
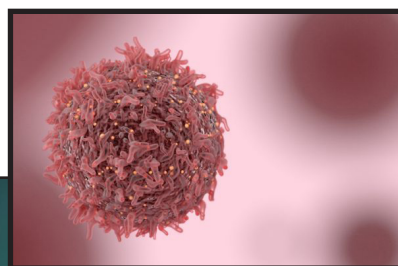
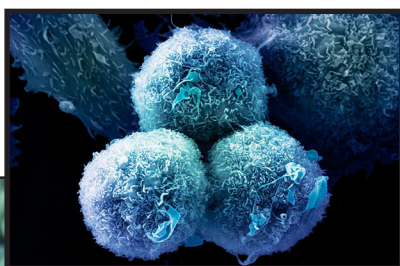
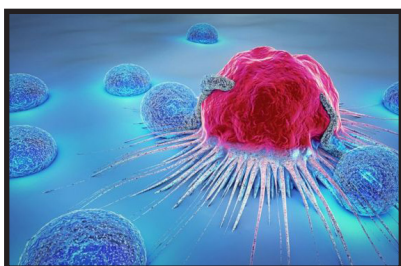
- Cancer Prevention & Cure
- Cancer Vaccines
- Cancer Immunology & Immunotherapy
- Lifestyle and Nutrition for Cancer
- Cancer screening
- Organ Specific Cancer
- Cancer Genetics and Epigenetics
- Cancer Metastasis
- Pathology In Cancer
- Cancer Bioinformatics & Biomarkers
- Radiation Therapy and its side effects
- Cancer Stem Cell Therapy

DAY 1	
Registration	08:00-09:00
Session Introduction	09:00-09:15
Keynote/ Plenary Sessions	
Plenary/Keynote-1 (Academia)	09:15-09:45
Plenary/Keynote-2 (Industry)	09:45-10:15
Plenary/Keynote-3	10:15-10:45
Coffee Break & Networking	10:45-11:00
Plenary/Keynote-4 (Academia)	11:00-11:30
Oral Presentations	
Speaker 1	11:30-11:50
Speaker 2	11:50-12:10
Speaker 3	12:10-12:30
Speaker 4 (Industry presentation)	12:30-12:50
Panel Discussion/ QA Session	12:50-13:10
Lunch Break & Networking	13:10-14:00
Post Lunch Session Introduction & Group Photograph	14:00-14:10
Post Lunch Oral Presentations	
Speaker 5	14:10-14:30
Speaker 6 (Industry Presentation)	14:30-14:50
Speaker 7 (Solution Providers Presentation X2)	14:50-15:10
Speaker 8	15:10-15:30
Panel Discussion/ QA Session	15:30-15:45
Video Sessions / e-Poster	
Video Presentation 1	15:45-15:55
Video Presentation 2	15:55-16:05
Coffee Break & Networking	16:05-16:30
Workshop/ Special Session	16:30-17:00
Award Ceremony/ Closing remark Day 1	
DAY 2	
Keynote/ Plenary Sessions	
Plenary/Keynote-1 (Academia)	09:15-09:45
Plenary/Keynote-2 (Industry)	09:45-10:15
Plenary/Keynote-3 (Solution Provider)	10:15-10:45
Coffee Break & Networking	10:45-11:00
Oral Presentations	
Speaker 1	11:00-11:20
Speaker 2 (Industry presentation)	11:20-11:40
Speaker 3	11:40-12:00
Speaker 4	12:00-12:20
Panel Discussion/ QA Session	12:20-12:30
Workshop/Symposium	12:30-13:10
Lunch Break & Networking	13:10-14:00
Poster Presentation	14:00-14:45
Young Investigators Presentations	
Speaker 5	14:45-15:05
Speaker 6	15:05-15:25
Speaker 7	15:25-15:45
Speaker 8	15:45-16:05
Panel Discussion/ QA Session	16:05-16:15
Coffee Break & Networking	16:15-16:30
Video Sessions/ e-poster	16:30-16:45
Award Ceremony/ Closing remark Day 2	

About Osaka

Osaka positions 19th among the world's driving urban areas and assumes a critical job in the worldwide economy. The gross city result of Osaka in the monetary year 2004 was ¥21.3 trillion, an expansion of 1.2% over the earlier year. Osaka is a cosmopolitan city near the ancient capital, Kyoto, best known for its dynamic food and drinking culture, and famously outgoing people. Osaka is Japan's second city, and on the surface might not seem like an off-the-beaten-path destination. Being the capital of Osaka prefecture and the third-largest city in Japan, with a population of 2.7 million, it is located in the Kansai region of the main island of Honshu, at the mouth of the Yodo River on Osaka Bay. Osaka is called the Manchester of Japan.

Osaka Attractions



Mail us to know more!

For Abstract Submission Guidelines | For Reserving your slot | Proposals | Registration | Posters | Accommodations

No doubt you have lots of queries...

Why not get in touch..!

Drop us your query with details and we will call you right away

UK: Conference Series llc LTD

47 Churchfield Road

London, W3 6AY, Tel: +44-0-800-014-8923