



Bipolar Disorder 2016

# International Conference on Bipolar Disorders, Schizophrenia and Mental Disorders

Chicago, USA October 26-27, 2016

## *Preliminary Program*



### Media Partners



**Contact:**

Lae Lopez

Bipolar Disorders 2016, Neuroscience Conferences

Office: 1- 650-268-9744, Toll Free: 1-800-216-6499 (USA & Canada), Fax: 1-650-618-1414

E-mail: [bipolarorders@neuroconferences.com](mailto:bipolarorders@neuroconferences.com)



# Organizing Committee

 <p><b>Mario Francisco Juruena</b> King's College London/ University of Sao Paulo UK/Brazil</p>	 <p><b>Richard C. Holbert</b> University of Florida USA</p>
 <p><b>Marco Montarroyos Callegaro</b> ICTC, and IPTC Sao Paulo Brazil</p>	 <p><b>SanjoySanyal</b> ADPHA Texila American University Guyana, South America</p>
 <p><b>Lars-Håkan</b> Linköping University Sweden</p>	 <p><b>Peter MT Deen</b> Radboud University Medical Center Netherlands</p>
 <p><b>José Alberto Del Porto</b> Federal University of São Paulo Brazil</p>	 <p><b>Ricardo Moreno</b> Universidade Federal de São Paulo Brazil</p>
 <p><b>Theun de Groot</b> Radboud University Medical Center Netherlands</p>	 <p><b>Juarez Nunes Callegaro</b> Brazilian Medical Association Psychiatrist, Sao Paulo Brazil</p>

# Tentative Speakers

**Ursula Danner**

Medical University of Graz,  
Austria

**Theun de Groot**

Radboud University Medical  
Centre, Nijmegen, The Netherlands

**Chandana C. Baruab**

College of Veterinary Science,  
Guwahati, India

**ElieCheniaux**

Instituto de Psiquiatria – Universidade Federal do Rio de Janeiro, Brazil

**Richard Morriss**

University of Nottingham, Nottingham, United Kingdom.

**Svetlana VuceticArsic**

Hospital for Addictions, Belgrade, Serbia

**Rebecca Owen**

University of Manchester, England

**Gegelashvili**

Iliia State University, Georgia

**Mary Ann von Bismark**

Hospital das Clínicas, São Paulo, Brazil

more.....





# Preliminary Schedule

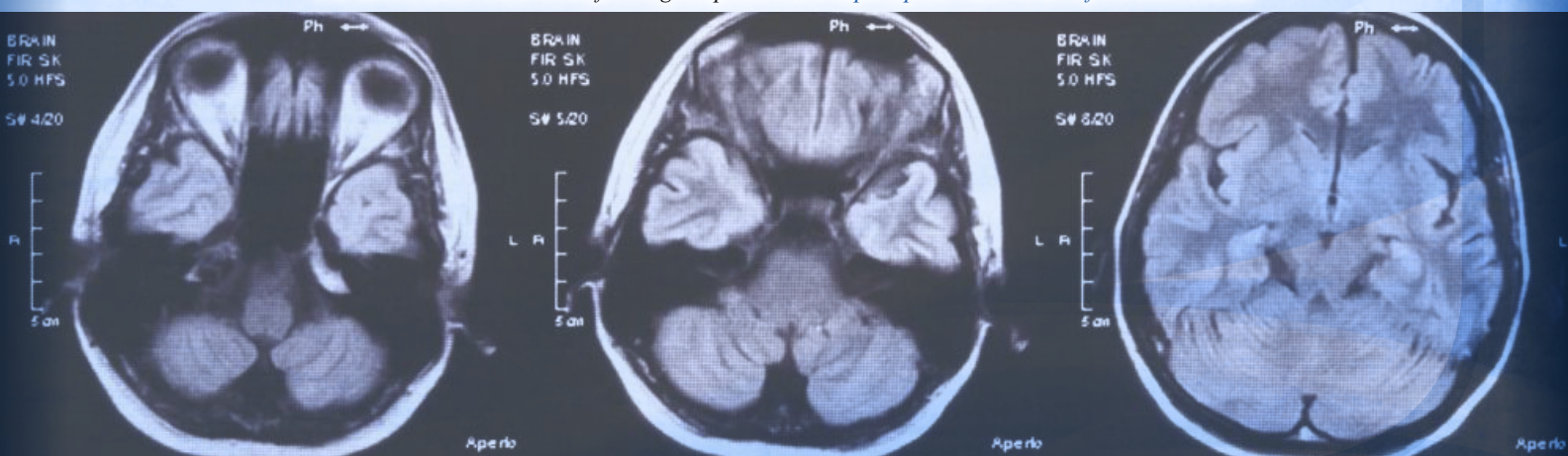
## Monday October 26

07:30 A.M-08.30 A.M	<b>Registration open</b>
08:30 A.M-09.00 A.M	<b>Opening Ceremony</b>
09:00 A.M-10.30 A.M	<b>Key Note Sessions</b>
10:30 A.M-10.45 A.M	<b>Coffee Break</b>
10:45 A.M-12:00 P.M	<b>Session on: Bipolar Disorders</b>
12:00 P.M-01:00 P.M	<b>Session on: Understanding Bipolar Disorders</b>
01:00 P.M-01:45 P.M	<b>Lunch</b>
01:45 P.M-03:30 P.M	<b>Session on: Progression in Treatment of Bipolar Disorders</b>
03:30 P.M-04:30 P.M	<b>Session on: Prevention of Bipolar Disorder</b>
04:30 P.M-04:45 P.M	<b>Coffee Break</b>
04:45 P.M-06:00 P.M	<b>Session on: Diagnosis and Neuroimaging of Bipolar Disorders</b>
06:00 P.M-07:00 P.M	<b>Panel Discussion/B2B</b>

## Tuesday October 27

08:00 A.M-09.00 A.M	<b>Session on: Comorbidity of Bipolar Disorders</b>
09:00 A.M-10.30 A.M	<b>Session on: Mechanisms and prevention of non-central lithium-induced side effects</b>
10:30 A.M-10.45 A.M	<b>Coffee Break</b>
10:45 A.M-12:00 P.M	<b>Session on: Assessing and Treating for Bipolar Disorders</b>
12:00 P.M-01:00 P.M	<b>Session on: Anti psychosis and Mood Stabilisers for Bipolar Disorders</b>
01:00 P.M-01:45 P.M	<b>Lunch</b>
01:45 P.M-03:00 P.M	<b>Session on: Schizophrenia</b>
03:00 P.M-04:00 P.M	<b>Session on: Mental Disorders</b>
04:00 P.M-04:30 P.M	<b>Session on: Advancement in Research on Bipolar Disorders</b>
04:30 P.M-05:30 P.M	<b>Poster Sessions</b>
05:30 P.M-06:00 P.M	<b>Coffee Break</b>
06:00 P.M-06:30 P.M	<b>Award Ceremony</b>

For more details about Scientific Program please visit: <http://bipolar-disorders.conferenceseries.com>





## *Tourist Attractions*



**Museum of Science and Industry**

At the north end of Jackson Park is the Museum of Science and Industry, founded in 1933, and arguably the most impressive museum in Chicago. It is devoted to the application of natural laws in technological and industrial development. The museum is thought to be the first in the U.S. to incorporate the idea of “hands-on” exhibits. Visitors are encouraged to interact with hundreds of exhibits. The MSI features permanent and changing exhibits, as well as an OMNIMAX theatre.



**Lincoln Park**

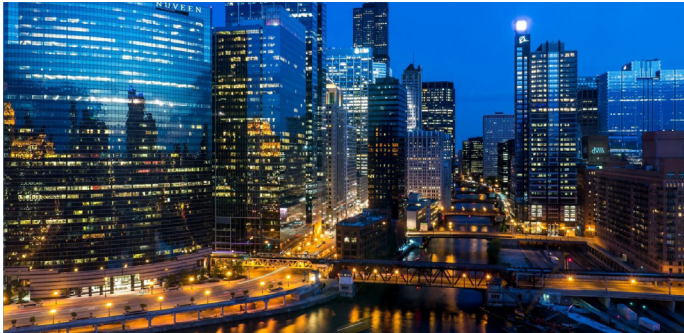
Lincoln Park is a 6 mile stretch of green space along the edge of Lake Michigan, and Chicago’s biggest park. This popular park is home to the lovely Lincoln Park Conservatory and the Lincoln Park Zoo, one of the oldest zoos in the country. Also located here are the Peggy Notebaert Nature Museum, and the Chicago History Museum. For those who simply want to enjoy the outdoor space there are playing fields, bike trails, jogging paths, and beaches.



**Navy Pier**

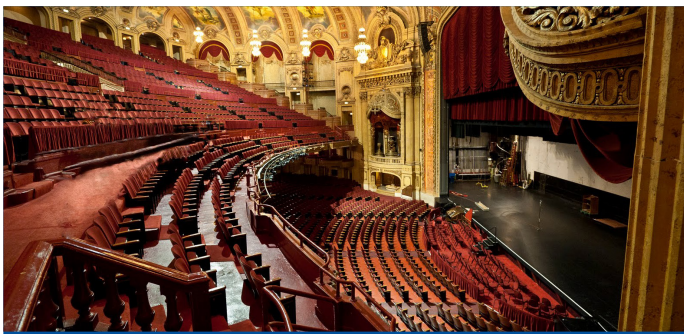
Navy Pier is a 3,300-foot-long (1,010 m) pier on the Chicago shoreline of Lake Michigan. It is located in the Streeterville neighborhood of the Near North Side community area. The Navy Pier currently encompasses more than fifty acres of parks, gardens, shops, restaurants, family attractions and exhibition facilities and is the top leisure destination in the Midwest, drawing nearly nine million visitors annually. It is one of the most visited attractions in the entire Midwestern United States and is Chicago’s number one tourist attraction.





Willis Tower

A bustling community of business, tourism and culture, Willis Tower is so much more than North America's tallest building. It's home to large well-known companies as well as hundreds of thriving businesses run by smart, passionate people. More than an office building, it's a cultural landmark and iconic Chicago tourist attraction. Willis Tower is a pivotal point of reference – from across town, from financial centers on both coasts, and from Europe, Asia, and the Middle East.



Chicago Theatre

The Chicago Theatre, originally known as the Balaban and Katz Chicago Theatre, is a landmark theater located on North State Street in the Loop area of Chicago, Illinois, in the United States. Built in 1921, the Chicago Theatre was the flagship for the Balaban and Katz (B&K) group of theatres run by A. J. Balaban, his brother Barney Balaban and partner Sam Katz. Along with the other B&K theatres, from 1925 to 1945 the Chicago Theatre was a dominant movie theater enterprise.



Cloud Gate

Cloud Gate is a public sculpture by Indian-born British artist Anish Kapoor, that is the centerpiece of AT&T Plaza at Millennium Park in the Loop community area of Chicago, Illinois. The sculpture and AT&T Plaza are located on top of Park Grill, between the Chase Promenade and McCormick Tribune Plaza & Ice Rink. Constructed between 2004 and 2006, the sculpture is nicknamed The Bean because of its shape. Made up of 168 stainless steel plates welded together, its highly polished exterior has no visible seams.

*Final Scientific Program will be Updated soon*