

LYMPHATICS OF ANTERIOR SEGMENT

PROF. DALJIT SINGH AMRITSAR, INDIA daljits1@gmail.com

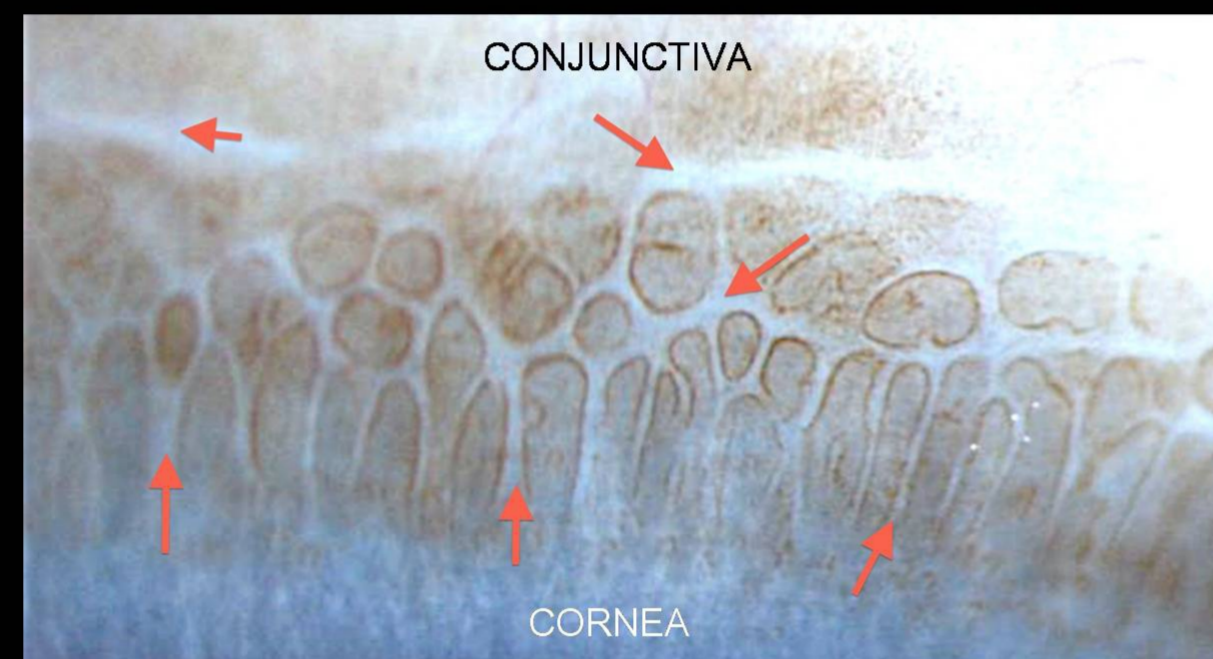
INTRODUCTION

We have studied lymphatics of the cornea and the conjunctiva for 15 years. The aqueous in them comes from Schlemm canal. The connecting link is Lucid interval "canal"/"Singh canal' Hereby we show the proofs

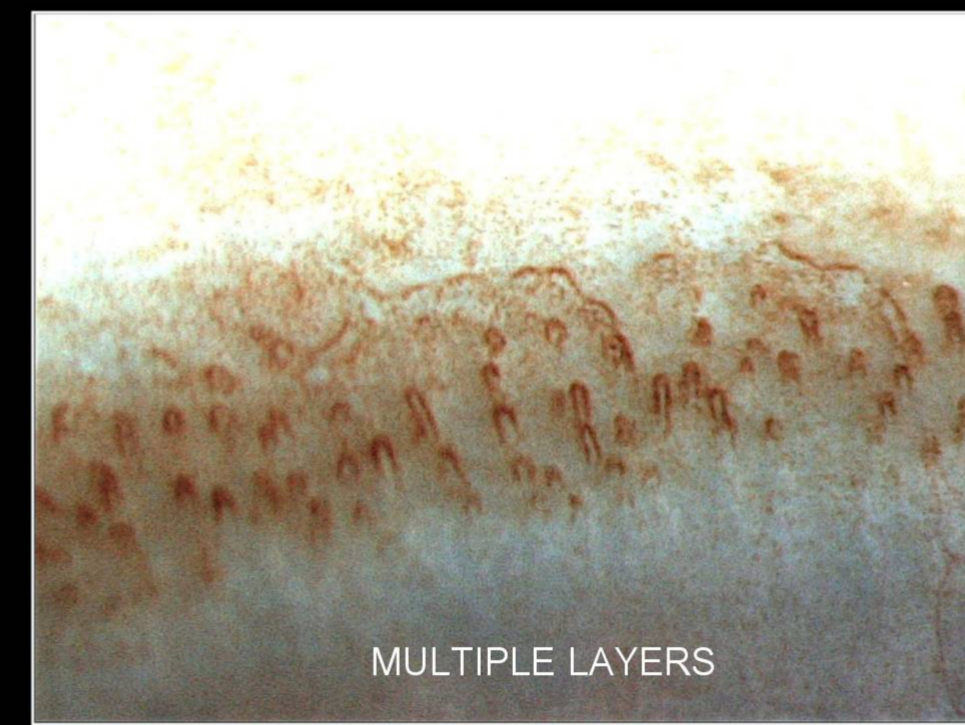
BLOOD IN LYMPHATICS



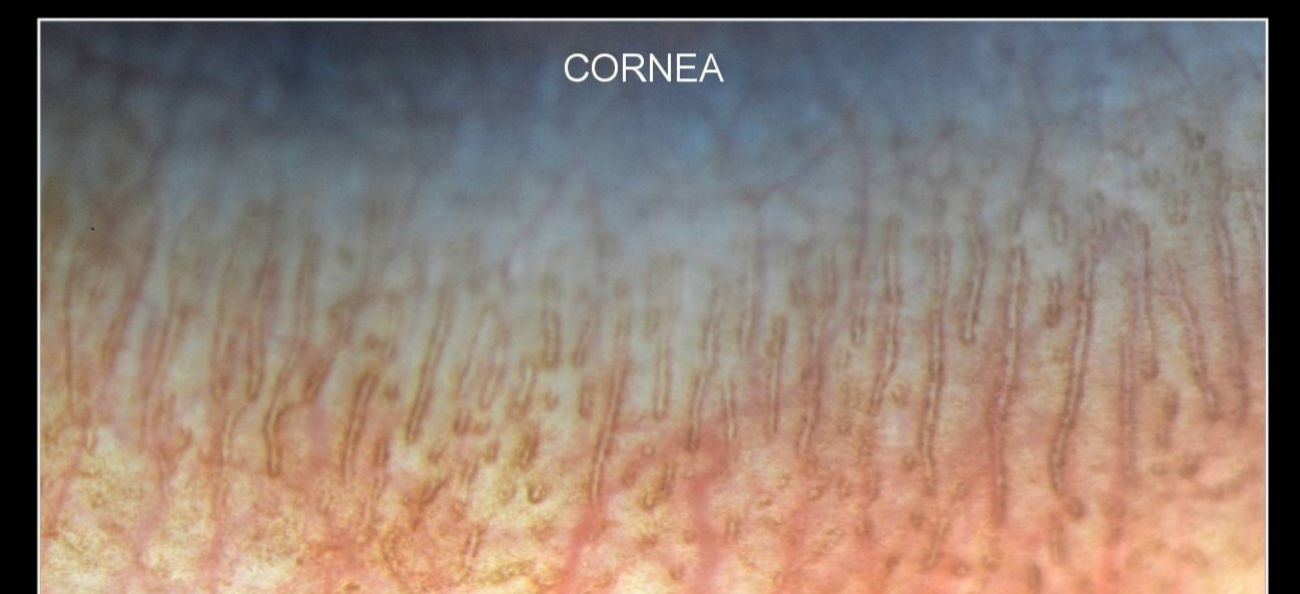
LIMBAL LYMPHATICS



MUSHROOM LIKE APPEARANCE
MULTIPLE LAYERS
OF LIMBAL LYMPHATICS



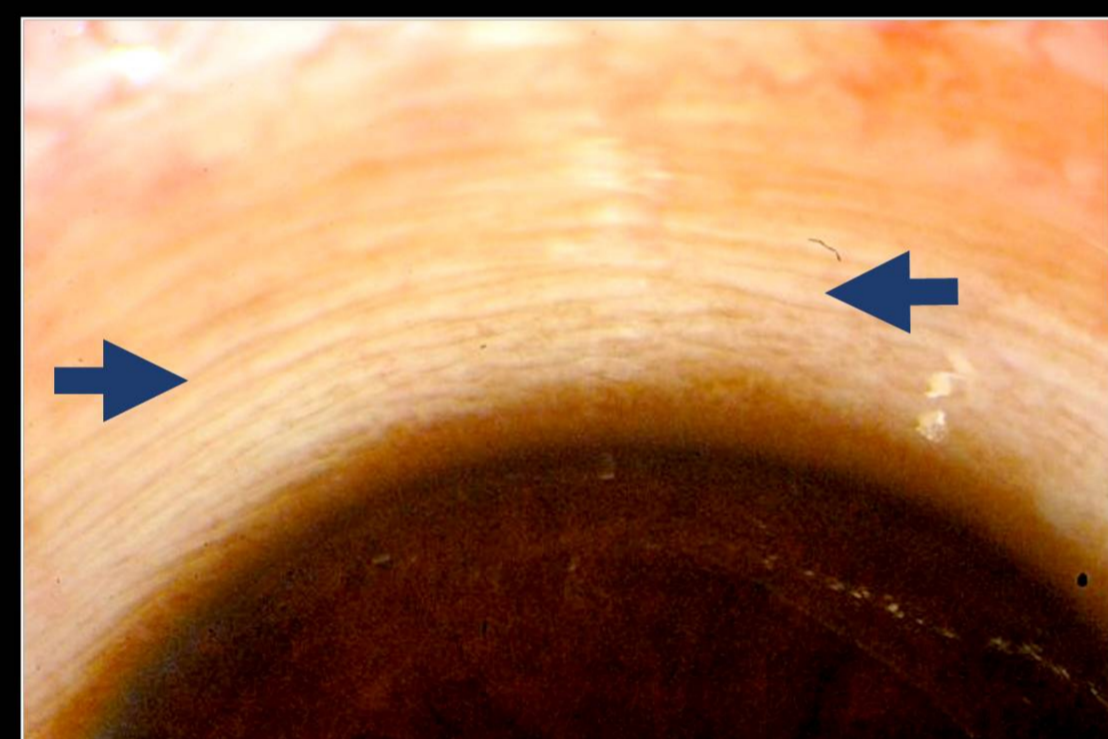
LIMBAL LYMPHATICS
IN MULTIPLE LAYERS



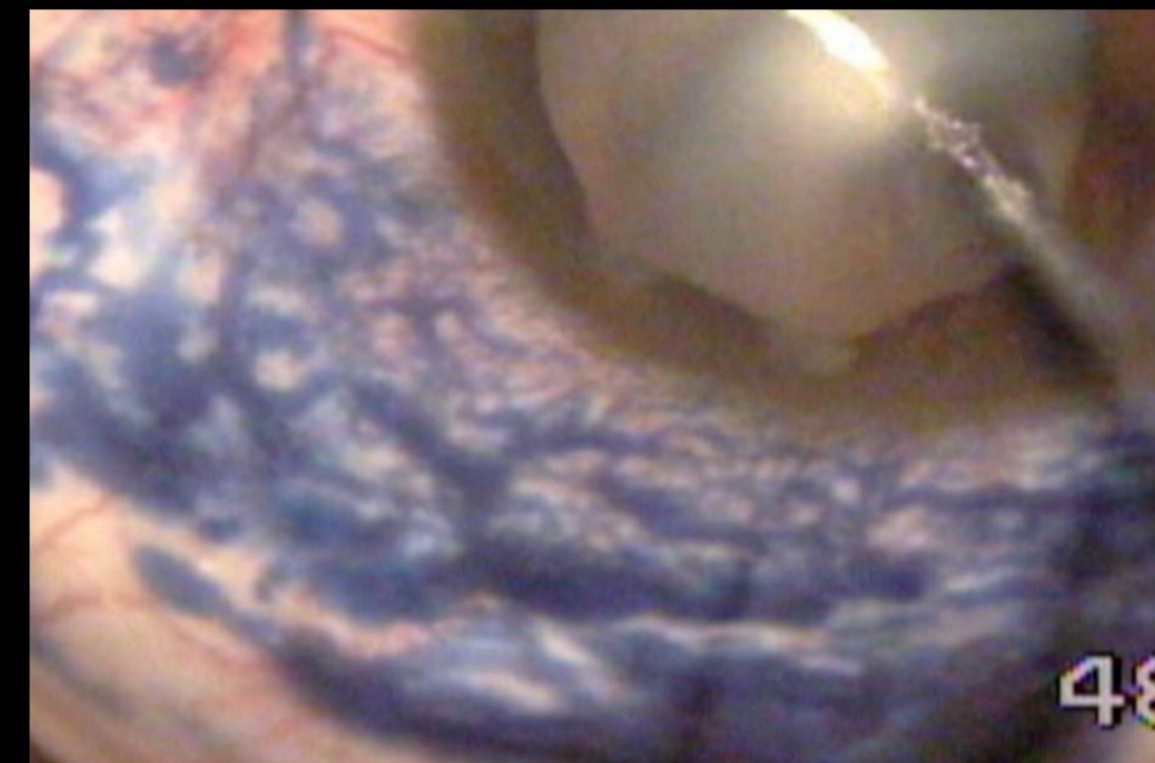
CONJUNCTIVAL LYMPHATICS
FROM LIMBUS TO FORNIX



TWIST AND SEE LYMPHATICS



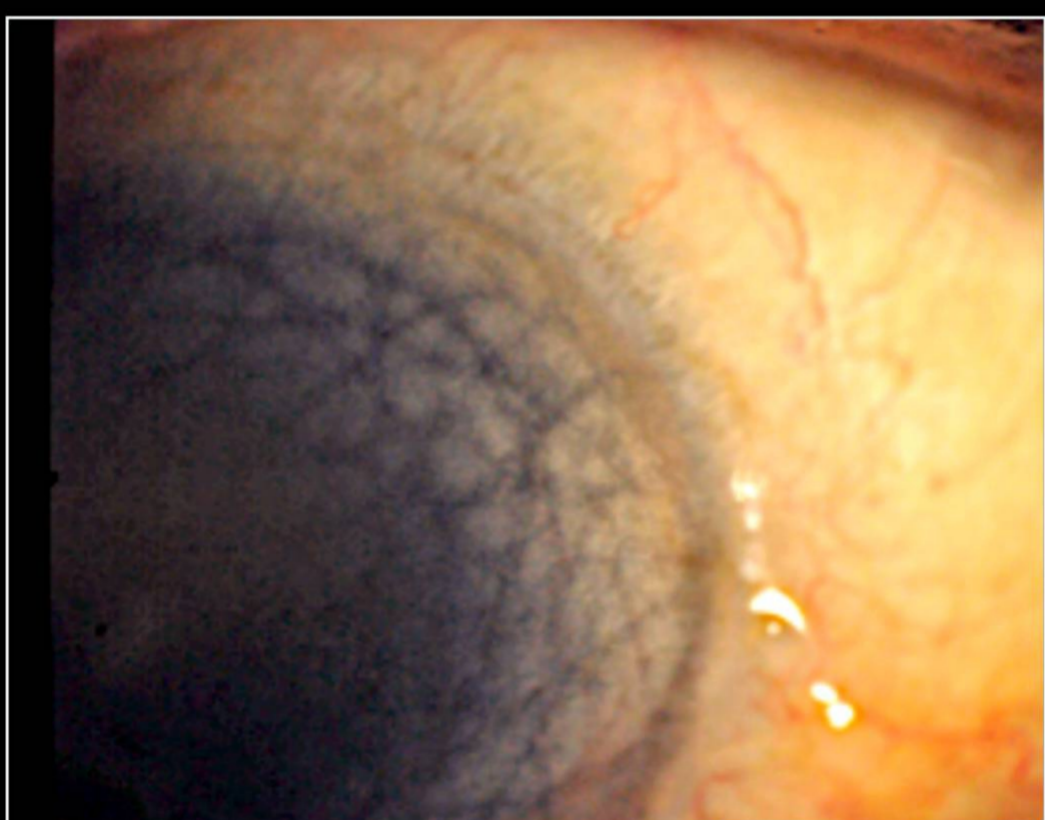
TRYPAN BLUE IN LYMPHATICS



MEGALOCORNEA
NETWORK OF CHANNELS



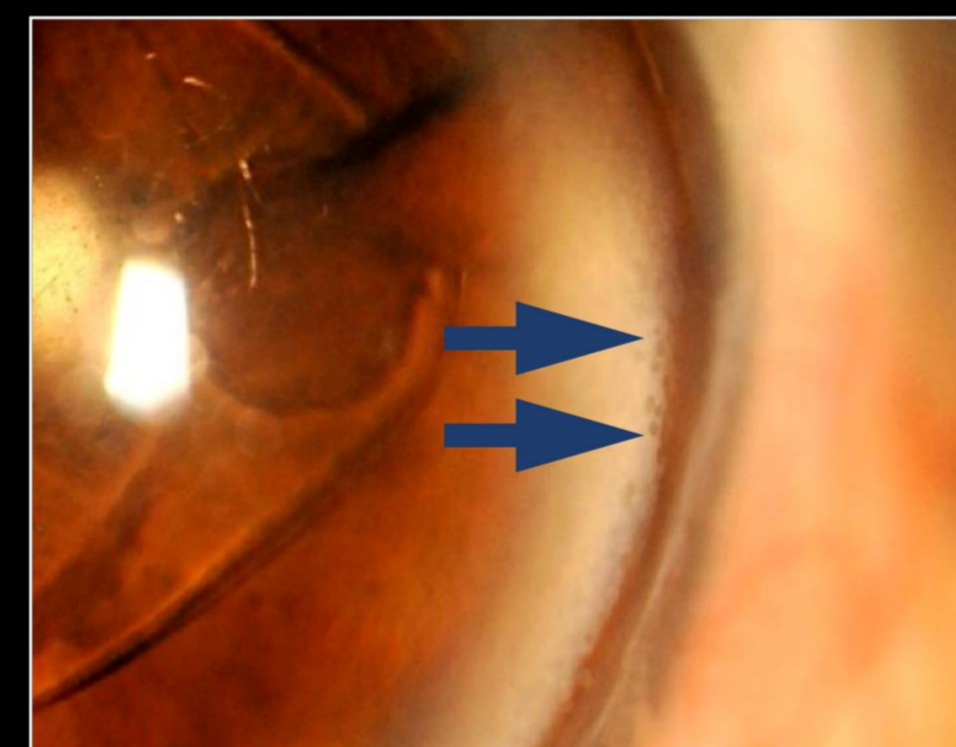
NETWORK IN ARCUS SENILIS



CHANNEL NETWORK, AGE 93



MAGNIFICATION
ROUGH EDGE SHOWS OPENINGS



FURTHER MAGNIFICATION
MULTIPLE LAYERS OF CORNEAL OPENINGS IN
TO LUCID INTERVAL

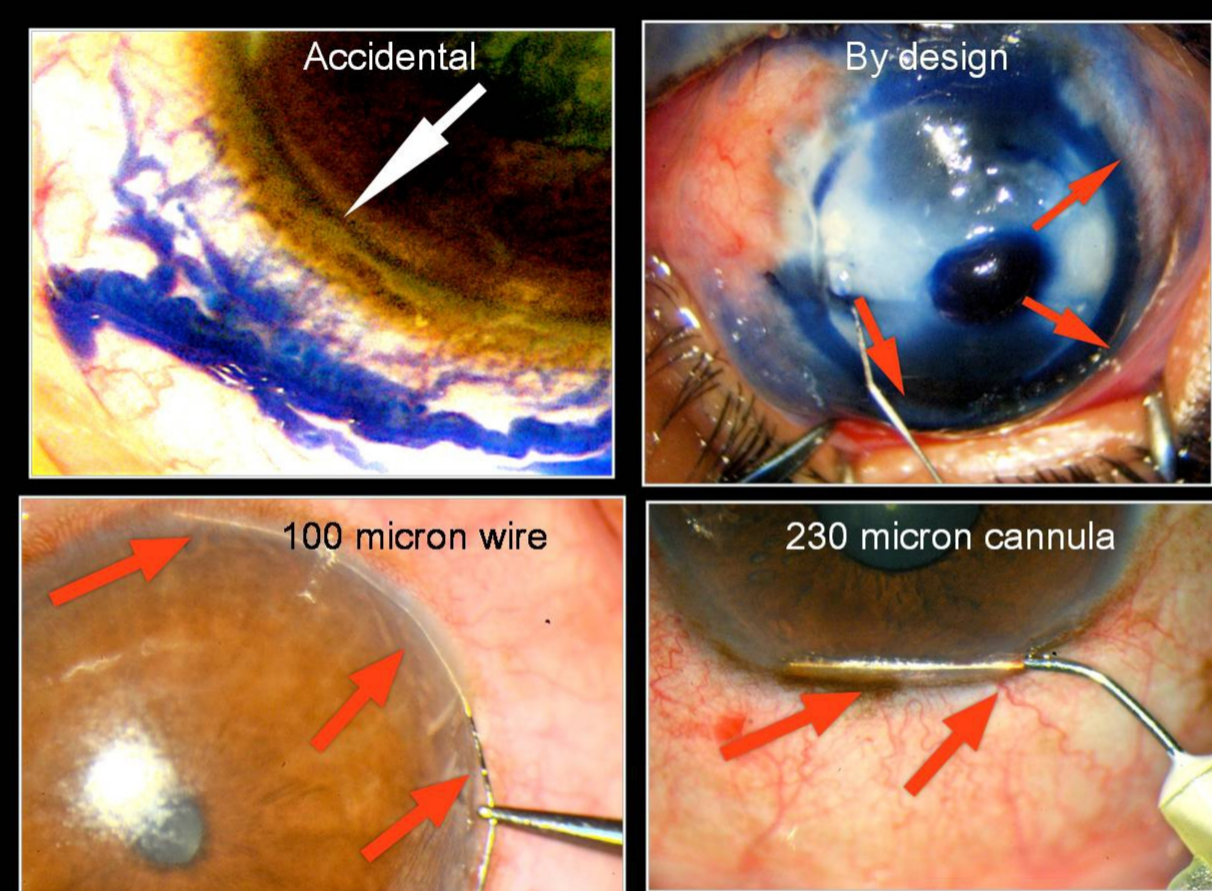


IRIS

LUCID INTERVAL
A
SINUSOIDAL
CANAL

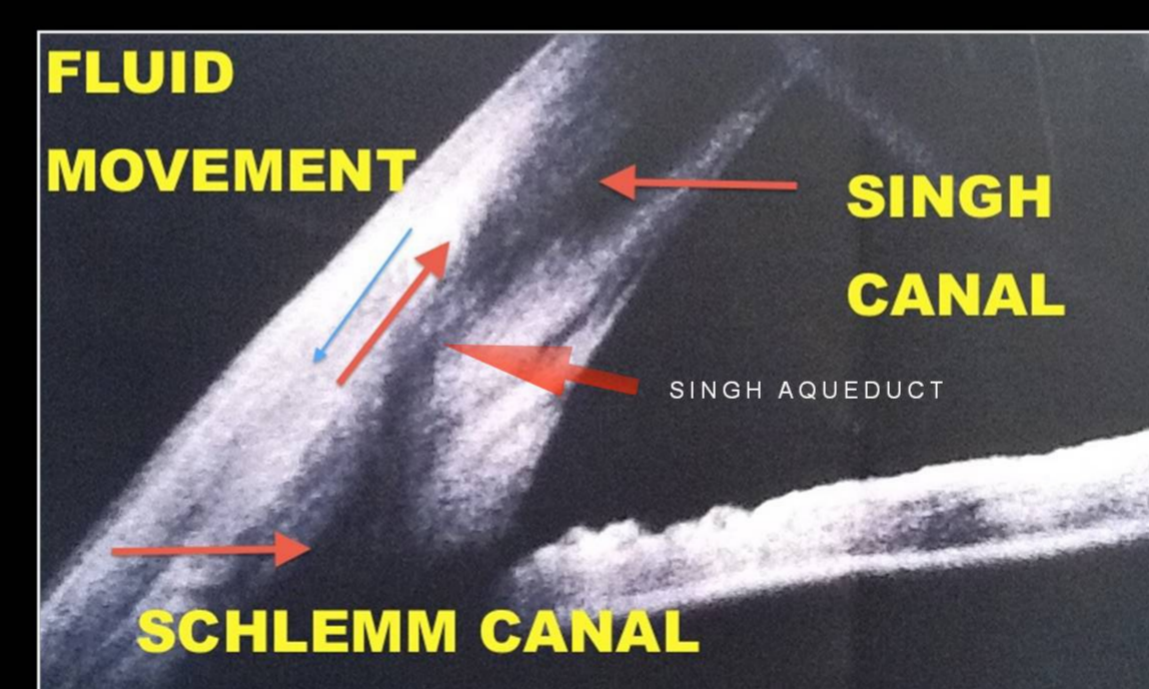


CANAL
OF
SINGH

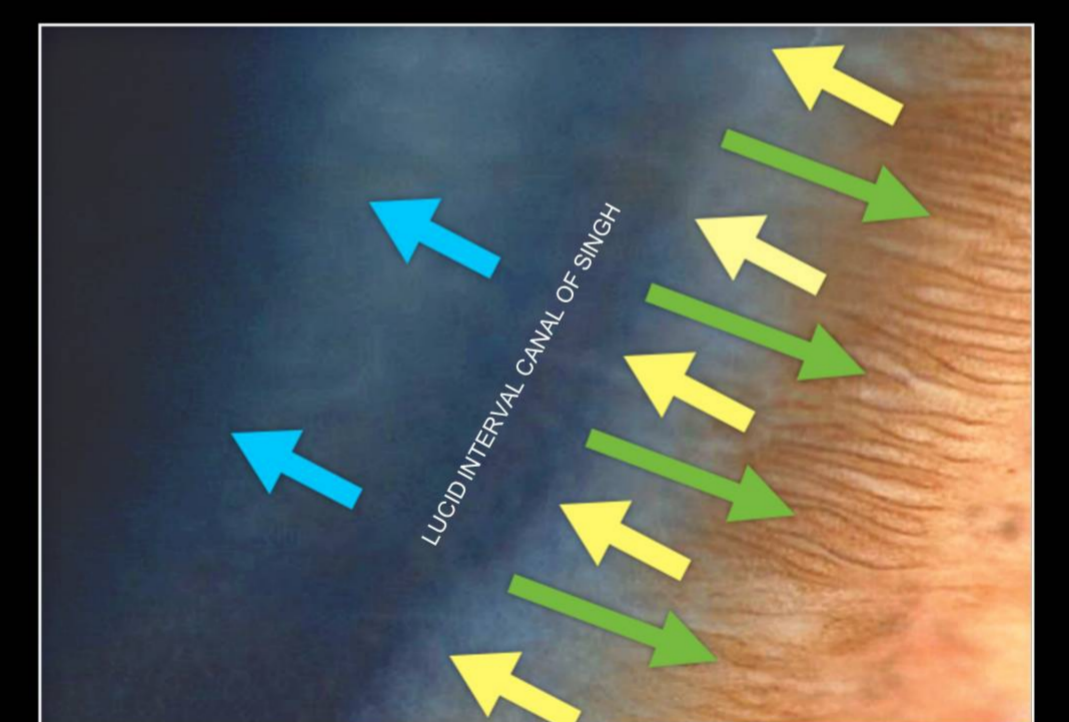


LUCID INTERVAL IS REALLY A CANAL

FREQUENT OCT FINDING
LUCID INTERVAL CONNECTED TO SCHLEMM
CANAL



SCHLEMM CANAL, CORNEAL & CONJUNCTIVAL LYMPHATICS
ARE ONE SYSTEM



CONCLUSIONS:

1. LYMPHATICS ARE PRESENT IN CORNEA AND CONJUNCTIVA.
2. THEY ARE JOINED TO SCHLEMM CANAL THROUGH LUCID INTERVAL CANAL OF SINGH.
3. LYMPHATICS DRAIN AQUEOUS NORMALLY AND AFTER FILTRATION SURGERY.
4. GLAUCOMA SURGERY SHOULD PROTECT LYMPHATICS FOR GREATER SUCCESS.